

2025-2028 Blue Book

Racing Rules of Sailing



World Sailing



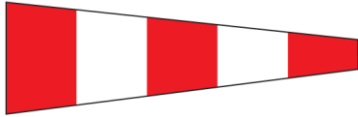
Australian Government
Australian Sports Commission

RACE SIGNALS

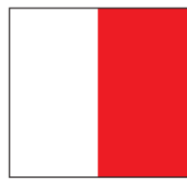
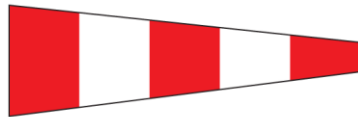
The meanings of visual and sound signals are stated below. An arrow pointing up or down

(↑ ↓) means that a visual signal is displayed or removed. A dot (•) means a sound; five short dashes (— — — — —) mean repetitive sounds; a long dash (—) means a long sound. When a visual signal is displayed over a class flag, fleet flag, event flag or race area flag, the signal applies only to that class, fleet, event or race area.

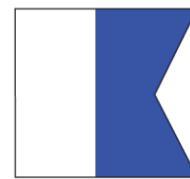
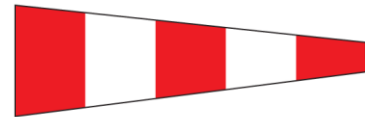
Postponement Signals



AP Races not started are postponed. The warning signal will be made 1 minute after removal unless at that time the race is postponed again or abandoned.



AP over H Races not started are postponed. Further signals ashore.



AP over A Races not started are postponed. No more racing today.

AP over a Numeral Pennant 1–9

Postponement of 1-9 hours from the scheduled starting time.



Pennant 1 ↑•• ↓•



Pennant 2 ↑•• ↓•



Pennant 3 ↑•• ↓•



Pennant 4 ↑•• ↓•



Pennant 5 ↑•• ↓•



Pennant 6 ↑•• ↓•



Pennant 7 ↑•• ↓•

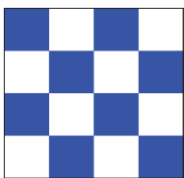


Pennant 8 ↑•• ↓•

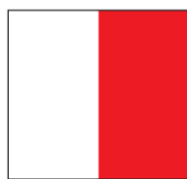


Pennant 9 ↑•• ↓•

Abandonment Signals



N All races in progress are abandoned. Return to the starting area. The warning signal will be made 1 minute after removal unless at that time the race is abandoned again or postponed.

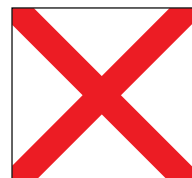


N over H All races in progress are abandoned. Further signals ashore



N over A All races in progress are abandoned. No more racing today.

Safety



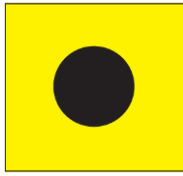
V Monitor communication channel for safety instructions (see rule 37).

Preparatory Signals



↑ ● ↓ —

P Preparatory signal.



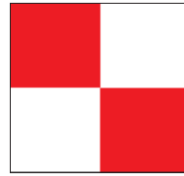
↑ ● ↓ —

I Rule [30.1](#) is in effect.



↑ ● ↓ —

Z Rule [30.2](#) is in effect.



↑ ● ↓ —

U Rule [30.3](#) is in effect.



↑ ● ↓ —

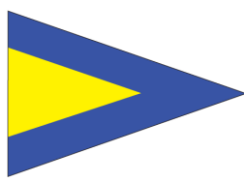
Black flag. Rule [30.4](#) is in effect.

Recall Signals



↑ ●

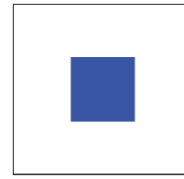
X Individual recall.



↑ ● ● ↓ ●

First Substitute General recall. The warning signal will be made 1 minute after removal.

Shortened Course



↑ ● ●

S The course has been shortened. Rule [32.2](#) is in effect.

Changing the Next Leg



C The position of the next [mark](#) has been changed:



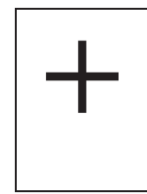
to starboard;



to port;



to decrease the length of the leg;



to increase the length of the leg.

Other Signals



↑ ●

L Ashore: A notice to competitors has been posted. Afloat: Come within hail or follow this vessel.

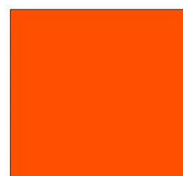


M The object displaying this signal replaces a missing [mark](#).



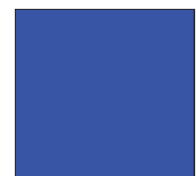
↑ ●

Y Wear a personal flotation device (see rule [40](#)).



(no sound)

Orange flag. The staff displaying this flag is one end of the starting line.



(no sound)

Blue flag. The staff displaying this flag is one end of the finishing line.



**RACING RULES
OF
SAILING
for 2025–2028**

CONTAINING

**The 2025-2028 Racing Rules of Sailing (RRS) of World Sailing, and
the Prescriptions of Australian Sailing**

The Racing Rules of Sailing are effective from 1 January 2025

World Sailing has provided for the possibility of changing the RRS
annually.

CONTENTS

Race Signals	<i>Inside front cover</i>
Online Rules Documents	4
Introduction	5
Definitions	8
Basic Principles	13
Part 1 Fundamental Rules	13
Part 2 When Boats Meet	16
Part 3 Conduct of a Race	23
Part 4 Other Requirements When Racing	28
Part 5 Protests, Redress, Hearings, Misconduct and Appeals	36
Part 6 Entry and Qualification	52
Part 7 Event Organization	54
Appendix A Scoring	59
Appendix B Windsurfing Fleet Racing Rules	63
Appendix C Match Racing Rules	73
Appendix D Team Racing Rules	87
Appendix E Radio Sailing Racing Rules	95
Appendix F Kiteboarding Racing Rules	106
Appendix G Identification on Sails	118
Appendix H Weighing Clothing and Equipment	123
Appendix J Notice of Race and Sailing Instructions	124
Appendix M Recommendations for Protest Committees	129
Appendix N International Juries	136
Appendix P Special Procedures for Rule 42	139
Appendix R Procedures for Appeals and Requests	142
Appendix S Standard Sailing Instructions	145
Appendix T Arbitration	152
List of Rules with Australian Sailing Prescriptions	167

ONLINE RULES DOCUMENTS

World Sailing has established a single internet address at which readers will find links to all the documents available on the World Sailing website that are mentioned in this book. Those documents are listed below. Links to other rules documents will also be provided at that address.

The address is: **www.sailing.org/racingrules**

<i>Document</i>	<i>Mentioned in</i>
Guidelines for discretionary penalties	Introduction
Changes made to these rules after 1 January 2025	Introduction
Notice of Race and Sailing Instructions Guides	Introduction
World Sailing Regulations	Introduction
<i>The Case Book</i>	Introduction
<i>The Call Books</i> for various disciplines	Introduction
World Sailing Regulations with the status of a <i>rule</i>	Definition Rule (b)
Interpretations of Rule 42, Propulsion	Rule 42
<i>World Sailing Offshore Special Regulations</i>	Rule 49.2
The Equipment Rules of Sailing	Several rules
Appendix TS, Traffic Separation Schemes	Rule 56.2
Hearing Request and Hearing Decision Forms	Part 5 Preamble
Rules for other windsurfing competition formats	Appendix B Preamble
Standard Notice of Race for Match Racing	Appendix C Preamble
Standard Sailing Instructions for Match Racing	Appendix C Preamble
Match Racing Rules for Blind Competitors	Appendix C Preamble
Development Rules for Umpired Radio Sailing	Appendix E Preamble
Rules for other kiteboarding competition formats	Appendix F Preamble
Up-to-date table of National Sail Letters	Appendix G

Guidance on conflicts of interest	Appendix M2.3
Guidance on misconduct	Appendix M6.8
<i>World Sailing Judges Manual</i>	Appendix T Preamble

INTRODUCTION

The Racing Rules of Sailing includes two main sections. The first, Parts 1–7, contains rules that affect all competitors. The second, the appendices, provides details of rules, rules that apply to particular kinds of racing, and rules that affect only a small number of competitors or officials.

Terminology A term used in the sense stated in the Definitions is printed in italics or, in preambles, in bold italics (for example, *racing* and ***racing***).

Each of the terms in the table below is used in *The Racing Rules of Sailing* with the meaning given.

<i>Term</i>	<i>Meaning</i>
Boat	A sailboat and the crew on board, that are subject to the rules .
Competitor	A person who races or intends to race in the event.
National authority	A World Sailing member national authority.
Race committee	The race committee appointed under rule 89.2(c) and any other person or committee performing a race committee function.
Racing rule	A rule in <i>The Racing Rules of Sailing</i> .
Technical committee	The technical committee appointed under rule 89.2(c) and any other person or committee performing a technical committee function.
Vessel	Any boat or ship.

Other words and terms are used in the sense ordinarily understood in nautical or general use. For a source of the nautical sense of a word, a reader may refer to *The Equipment Rules of Sailing*.

Hails A language other than English may be used for a hail required by the [rules](#) provided that it is reasonable for it to be understood by all boats affected. However, a hail in English is always acceptable.

Notation The notation '[DP]' in a [rule](#) means that the penalty for a breach of the [rule](#) may, at the discretion of the protest committee, be less than disqualification. Guidelines for discretionary penalties are available on the World Sailing website.

Revision The racing rules are revised and published every four years by World Sailing, the international authority for the sport. This edition becomes effective on 1 January 2025 except that for an event beginning in 2024 the date may be postponed by the notice of race. Marginal markings indicate important changes to Parts 1–7 and the Definitions in the 2021–2024 edition. No changes are contemplated before 2029, but any changes determined to be urgent before then will be announced through national authorities and posted on the World Sailing website.

Appendices When the rules of an appendix apply, they take precedence over any conflicting rules in Parts 1–7 and the Definitions. Each appendix in this book is identified by a letter. Other appendices are available on the World Sailing website and are identified by two or three letters. A reference to a rule in an appendix will contain the letter or letters, and the rule number (for example, 'rule A1' or 'rule MR1'). The letters I, K, L, O and Q are not used to designate appendices in this book.

Development Rules Development Rules may be approved by World Sailing for specific events or categories of events. They are available on the World Sailing website and are identified by the letters DR.

Notice of Race and Sailing Instructions Guides and templates for writing a notice of race and sailing instructions are available, in various file formats, on the World Sailing website at www.sailing.org/racingrules. National authorities are encouraged to translate these guides and templates.

World Sailing Regulations The Regulations are referred to in the definition [Rule](#) and in rule [6](#), but they are not included in this book because they can be changed at any time. The most recent versions of the Regulations are published on the World

Sailing website; new versions will be announced through national authorities.

Interpretations World Sailing publishes the following authoritative interpretations of the racing rules:

- *The Case Book – Interpretations of the Racing Rules*,
- *The Call Books*, for various disciplines,
- Interpretations of Rule 42, Propulsion, and
- Interpretations of the Regulations, for those Regulations that are rules.

These publications are available on the [World Sailing website](#). Other interpretations of the racing rules are not authoritative unless approved by World Sailing.

DEFINITIONS

A term used as stated below is shown in italic type or, in preambles, in bold italic type. The meaning of several other terms is given in Terminology in the Introduction.

Abandon A race that a race committee or protest committee *abandons* is void but may be resailed.

Clear Astern and Clear Ahead; Overlap One boat is *clear astern* of another when her hull and equipment in normal position are behind a line abeam from the aftermost point of the other boat's hull and equipment in normal position. The other boat is *clear ahead*. They *overlap* when neither is *clear astern*. However, they also *overlap* when a boat between them *overlaps* both. These terms always apply to boats on the same [tack](#). They apply to boats on opposite [tacks](#) only when rule 18 applies between them or when both boats are sailing more than ninety degrees from the true wind.

Committee The protest committee, the race committee or the technical committee.

Conflict of Interest A *conflict of interest* exists if a person

- (a) may gain or lose as a result of a decision to which that person contributes,
- (b) may reasonably appear to have a personal or financial interest which could affect that person's ability to be impartial, or
- (c) has a close personal interest in a decision.

Continuing Obstruction An [obstruction](#) is a *continuing obstruction* when the boat with the shortest hull referred to in the rule using the term will pass alongside it for at least three of her hull lengths. However, the following are not a *continuing obstruction*: a vessel under way, a boat [racing](#), or a race committee vessel that is also a [mark](#).

Fetching A boat is *fetching* a [mark](#) when she is in a position to pass to windward of it and leave it on the required side without changing [tack](#).

Finish A boat *finishes* when, after her starting signal, any part of her hull crosses the finishing line from the course side. However, she has not *finished* if after crossing the finishing line she

DEFINITIONS

- (a) takes a penalty under rule [44.2](#),
- (b) corrects an error in *sailing the course* made at the line, or
- (c) continues to [sail the course](#).

After [finishing](#) she need not cross the finishing line completely. The sailing instructions may change the direction in which boats are required to cross the finishing line to [finish](#).

Keep Clear A boat *keeps clear* of a right-of-way boat

- (a) if the right-of-way boat can sail her course with no need to take avoiding action and,
- (b) when the boats are [overlapped](#), if the right-of-way boat can also change course in both directions without immediately making contact.

Leeward and Windward A boat's *leeward* side is the side that is or, when she is head to wind, was away from the wind. However, when sailing by the lee or directly downwind, her *leeward* side is the side on which her mainsail lies. The other side is her *windward* side. When two boats on the same [tack overlap](#), the one on the *leeward* side of the other is the *leeward* boat. The other is the *windward* boat.

Mark An object the sailing instructions require a boat to leave on a specified side, a race committee vessel surrounded by navigable water from which the starting or finishing line extends, and an object intentionally attached to the object or vessel. However, an anchor line is not part of the *mark*.

Mark-Room [Room](#) for a boat

- (a) to sail to the [mark](#) when her [proper course](#) is to sail close to it,
- (b) to round or pass the [mark](#) on the required side, and
- (c) to leave it astern.

Obstruction An *obstruction* is

- (a) an object that a boat could not pass without changing course substantially, if she were sailing directly towards it and one of her hull lengths from it;
- (b) an object that can be safely passed on only one side; or
- (c) an object, area or line that is so designated in a [rule](#);

DEFINITIONS

However, a boat [racing](#) is not an [obstruction](#) to other boats unless they are required to [keep clear](#) of her or, if rule [22](#) applies, avoid her.

Overlap See *Clear Astern and Clear Ahead; Overlap*.

Party A party to a hearing is

- (a) for a protest hearing: a protestor, a protestee;
- (b) for a redress hearing: a boat requesting redress or for which redress is requested; a boat for which a hearing is called to consider redress under rule [61.1](#); a [committee](#) acting under rule [61.1](#);
- (c) for a redress hearing under rule [61.4\(b\)\(1\)](#): the body alleged to have made an improper action or improper omission;
- (d) a person against whom an allegation of a breach of rule [69.1\(a\)](#) is made; a person presenting an allegation under rule [69.2\(e\)\(1\)](#);
- (e) a [support person](#) subject to a hearing under rule [62](#) or [69](#); any boat that person supports; a person appointed to present an allegation under rule [62.2](#).

However, the protest committee is never a [party](#).

Postpone A *postponed* race is delayed before its scheduled start but may be started or [abandoned](#) later.

Proper Course A course a boat would choose in order to [sail the course](#) as quickly as possible in the absence of the other boats referred to in the rule using the term. A boat has no *proper course* before her starting signal.

Protest An allegation made under rule [60](#) by a boat or a [committee](#) that a boat has broken a [rule](#).

Racing A boat is *racing* from her preparatory signal until she [finishes](#) and clears the finishing line and [marks](#) or retires, or until the race [committee](#) signals a general recall, [postponement](#) or [abandonment](#).

Room The space a boat needs in the existing conditions, including space to comply with her obligations under the rules of [Part 2](#) and rule [31](#), while manoeuvring promptly in a seamanlike way.

Rule

- (a) The rules in this book, including the Definitions, Race Signals, Introduction, preambles and the rules of relevant appendices, but not the Basic Principles or titles;
- (b) World Sailing Regulations that have been designated by World Sailing as having the status of a [rule](#) and are published on the World Sailing website;
- (c) the prescriptions of the national authority, unless they are changed by the notice of race or sailing instructions in compliance with the national authority's prescription, if any, to rule [88.2](#);
- (d) the class rules (for a boat racing under a handicap or rating system, the rules of that system are 'class rules');
- (e) the notice of race;
- (f) the sailing instructions; and
- (g) any other documents that govern the event.

Sail the Course A boat *sails the course* when

- (a) she [starts](#);
- (b) a string representing her track until she [finishes](#), when drawn taut,
 - (1) passes each [mark](#) of the course for the race on the required side and in the correct order (including the starting [marks](#)),
 - (2) touches each [mark](#) designated in the sailing instructions to be a rounding [mark](#), and
 - (3) passes between the [marks](#) of a gate from the direction of the course from the previous [mark](#); and then
- (c) she [finishes](#).

A [mark](#) that does not begin, bound or end the leg the boat is sailing does not have a required side.

Start A boat [starts](#) when, her hull having been entirely on the pre-start side of the starting line at or after her starting signal, and having complied with rule [30.1](#) if it applies, any part of her hull crosses the starting line from the pre-start side to the course side.

Support Person Any person who

- (a) provides, or may provide, physical or advisory support to a competitor, including any coach, trainer, manager, team staff,

DEFINITIONS

medic, paramedic or any other person working with, treating or assisting a competitor in or preparing for the competition, or

(b) is the parent or guardian of a competitor.

Tack, Starboard or Port A boat is on the *tack*, *starboard* or *port*, corresponding to her [windward](#) side.

Windward See *Leeward* and *Windward*.

Zone The area around a [mark](#) within a distance of three hull lengths of the boat nearer to it. A boat is in the *zone* when any part of her hull is in the *zone*.

BASIC PRINCIPLES

The Basic Principles shall not be changed.

SPORTSMANSHIP AND THE RULES

Competitors in the sport of sailing are governed by a body of [rules](#) that they are expected to follow and enforce. A fundamental principle of sportsmanship is that when a boat breaks a [rule](#) and is not exonerated, she will promptly take an appropriate penalty or action, which may be to retire.

ENVIRONMENTAL RESPONSIBILITY

Participants are encouraged to minimize any adverse environmental impact of the sport of sailing.

PART 1

FUNDAMENTAL RULES

1 SAFETY

1.1 Helping Those in Danger

A boat, competitor or [support person](#) shall give all possible help to any person or vessel in danger.

1.2 Life-Saving Equipment and Personal Flotation Devices

A boat shall carry adequate life-saving equipment for all persons on board, including one item ready for immediate use, unless her class rules make some other provision. Each competitor is individually responsible for wearing a personal flotation device adequate for the conditions.

Refer to the Australian Sailing prescription to rule [48](#).

2 FAIR SAILING

A boat and her owner shall compete in compliance with recognized principles of sportsmanship and fair play. A boat may be penalized under this rule only if it is clearly established

that these principles have been violated. The penalty shall be a disqualification that is not excludable.

3 DECISION TO RACE

The responsibility for a boat's decision to participate in a race or to continue racing is hers alone.

4 ACCEPTANCE OF THE RULES

4.1 (a) By participating or intending to participate in an event conducted under the rules, each competitor and boat owner agrees to accept the rules.

(b) A support person by providing support, or a parent or guardian by permitting their child to enter an event, agrees to accept the rules.

4.2 Each competitor and boat owner agrees, on behalf of their support persons, that such support persons are bound by the rules.

4.3 Acceptance of the rules includes agreement

(a) to be governed by the rules;

(b) to accept the penalties imposed and other action taken under the rules, subject to the appeal and review procedures provided in them, as the final determination of any matter arising under the rules;

(c) with respect to any such determination, not to resort to any court of law or tribunal not provided for in the rules; and

(d) by each competitor and boat owner to ensure that their support persons are aware of the rules.

4.4 The person in charge of each boat shall ensure that all competitors in the crew and the boat's owner are aware of their responsibilities under this rule.

4.5 This rule may be changed by a prescription of the national authority of the venue.

5 RULES GOVERNING ORGANIZING AUTHORITIES AND OFFICIALS

The organizing authority, a [committee](#) and other race officials shall be governed by the [rules](#) in the conduct and judging of the event.

6 WORLD SAILING REGULATIONS

6.1 Each competitor, boat owner and [support person](#) shall comply with the World Sailing Regulations that have been designated by World Sailing as having the status of a [rule](#). These regulations as of 30 June 2024 are the World Sailing:

- Advertising Code
- Anti-Doping Code
- Code of Ethics
- Eligibility Code
- Sailor Categorization Code

The national authority procedural rules required by World Sailing Regulations to implement the World Anti-Doping Code through the Regulations are set out in the Australian Sailing National Integrity Framework and Improper Use of Drugs and Medicine Policy, as published on the Australian Sailing website.

When the right to display advertising on a boat is subject to prior authorisation by the national authority in accordance with the Regulations, the approval of Australian Sailing is automatically granted provided that such advertising is permitted by the relevant rules of the class, rating system or handicapping system. When the person in charge of a boat chooses to display Advertising, Australian Sailing will not impose a fee as permitted by the Regulations.

6.2 The rules of [Part 5](#) do not apply unless [protests](#) are permitted in the Regulation alleged to have been broken.

PART 2

WHEN BOATS MEET

*The rules of Part 2 apply between boats that are sailing in or near the racing area and intend to **race**, are **racing**, or have been **racing**. However, a boat not **racing** shall not be penalized for breaking one of these rules, except rule [14](#) when the incident resulted in injury or serious damage, or rule [23.1](#).*

When a boat sailing under these rules meets a vessel that is not, she shall comply with the International Regulations for Preventing Collisions at Sea (IRPCAS) or government right-of-way rules. If the notice of race so states, the rules of Part 2 are replaced by the right-of-way rules of the IRPCAS or by government right-of-way rules.

SECTION A

RIGHT OF WAY

A boat has right of way over another boat when the other boat is required to [keep clear](#) of her. However, some rules in Sections B, C and D limit the actions of a right-of-way boat.

10 ON OPPOSITE TACKS

When boats are on opposite [tacks](#), a [port-tack](#) boat shall [keep clear](#) of a [starboard-tack](#) boat.

11 ON THE SAME TACK, OVERLAPPED

When boats are on the same [tack](#) and [overlapped](#), a [windward](#) boat shall [keep clear](#) of a [leeward](#) boat.

12 ON THE SAME TACK, NOT OVERLAPPED

When boats are on the same [tack](#) and not [overlapped](#), a boat [clear astern](#) shall [keep clear](#) of a boat [clear ahead](#).

13 WHILE TACKING

After a boat passes head to wind, she shall [keep clear](#) of other boats until she is on a close-hauled course. During that time

rules [10](#), [11](#) and [12](#) do not apply. If two boats are subject to this rule at the same time, the one on the other's port side or the one astern shall [keep clear](#).

SECTION B

GENERAL LIMITATIONS

14 AVOIDING CONTACT

If reasonably possible, a boat shall

- (a) avoid contact with another boat,
- (b) not cause contact between boats, and
- (c) not cause contact between a boat and an object that should be avoided.

However, a right-of-way boat, or one sailing within the [room](#) or [mark-room](#) to which she is entitled, need not act to avoid contact until it is clear that the other boat is not *keeping clear* or giving [room](#) or [mark-room](#).

15 ACQUIRING RIGHT OF WAY

When a boat acquires right of way, she shall initially give the other boat [room](#) to [keep clear](#), unless she acquires right of way because of the other boat's actions.

16 CHANGING COURSE

16.1 When a right-of-way boat changes course, she shall give the other boat [room](#) to [keep clear](#).

16.2 In addition, on a beat to windward when a [port-tack](#) boat is *keeping clear* by sailing to pass to [leeward](#) of a [starboard-tack](#) boat, the [starboard-tack](#) boat shall not bear away if as a result the [port-tack](#) boat must change course immediately to continue [keeping clear](#).

17 ON THE SAME TACK; PROPER COURSE

If a boat [clear astern](#) becomes [overlapped](#) within two of her hull lengths to [leeward](#) of a boat on the same [tack](#), she shall not sail above her [proper course](#) while they remain on the same [tack](#)

and overlapped within that distance, unless in doing so she promptly sails astern of the other boat.

SECTION C

AT MARKS AND OBSTRUCTIONS

*Section C rules do not apply between boats when the mark or obstruction referred to in those rules is a starting mark surrounded by navigable water or its anchor line, from the time the boats are approaching it to **start** until they have left it astern.*

18 MARK-ROOM

18.1 When Rule 18 Applies

- (a) Rule 18 applies between boats when they are required to leave a mark on the same side and at least one of them is in the zone. However, it does not apply
- (1) between boats on opposite tacks on a beat to windward,
 - (2) between boats on opposite tacks when the proper course at the mark for one but not both of them is to tack,
 - (3) between a boat approaching a mark and one leaving it, or
 - (4) if the mark is a continuing obstruction, in which case rule 19 applies.
- (b) Rule 18 no longer applies between boats when mark-room has been given.

18.2 Giving Mark-Room

- (a) When the first of two boats reaches the zone,
- (1) if the boats are overlapped, the outside boat at that moment shall give the inside boat mark-room;
 - (2) if the boats are not overlapped, the boat that has not reached the zone at that moment shall give the other boat mark-room.

When a boat is required to give [mark-room](#) by this rule, she shall continue to do so for as long as this rule applies, even if later an [overlap](#) is broken or a new [overlap](#) begins.

- (b) Rule [18.2\(a\)](#) no longer applies if the boat entitled to [mark-room](#) passes head to wind or leaves the [zone](#).
- (c) When rule [18.2\(a\)](#) does not apply and the boats are [overlapped](#), the outside boat shall give the inside boat [mark-room](#).
- (d) If a boat obtained an inside [overlap](#) from [clear astern](#) or by tacking to [windward](#) of the other boat and, from the time the [overlap](#) began, the outside boat has been unable to give [mark-room](#), rules [18.2\(a\)](#) and [18.2\(c\)](#) do not apply between them.
- (e) If there is reasonable doubt that a boat obtained or broke an [overlap](#) in time, it shall be presumed that she did not.

18.3 Tacking in the Zone

If a boat passes head to wind from *port* to *starboard tack* in the [zone](#) of a [mark](#) to be left to port, rule [18.2](#) does not apply between her and another boat on *starboard tack* that is [fetching](#) the [mark](#). If the other boat has been on *starboard tack* since entering the [zone](#), the boat that passed head to wind

- (a) shall not cause the other boat to sail above close-hauled to avoid contact, and
- (b) shall give [mark-room](#) if the other boat becomes [overlapped](#) inside her.

18.4 Gybing in the Zone

When an inside [overlapped](#) right-of-way boat must gybe at a [mark](#) to sail her [proper course](#), until she gybes she shall sail no farther from the [mark](#) than needed to sail that course. Rule 18.4 does not apply at a gate [mark](#).

19 ROOM TO PASS AN OBSTRUCTION

19.1 When Rule 19 Applies

Rule [19](#) applies between two boats at an [obstruction](#) except when rule [18](#) applies between them and

- (a) the [obstruction](#) is the [mark](#), or

- (b) the obstruction is another boat overlapped with each of them.

However, at a continuing obstruction, rule 19 always applies and rule 18 does not.

19.2 Giving Room at an Obstruction

- (a) A right-of-way boat may choose to pass an obstruction on her port or starboard side. If a right-of-way boat changes course when choosing on which side to pass the obstruction, she shall give the other boat room to keep clear.
- (b) When the boats are overlapped, the outside boat shall give the inside boat room between her and the obstruction, unless she has been unable to do so from the time the overlap began.
- (c) While boats are passing a continuing obstruction, if a boat that was clear astern and required to keep clear becomes overlapped between the other boat and the obstruction and, at the moment the overlap begins, there is not room for her to pass between them,
- (1) she is not entitled to room under rule 19.2(b), and
 - (2) while the boats remain overlapped, she shall keep clear and rules 10 and 11 do not apply.

20 ROOM TO TACK AT AN OBSTRUCTION

20.1 Hailing

A boat may hail for room to tack and avoid a boat on the same tack by hailing 'Room to tack'. However, she shall not hail unless

- (a) she is approaching an obstruction and will soon need to make a substantial course change to avoid it safely, and
- (b) she is sailing close-hauled or above.

In addition, she shall not hail if the obstruction is a mark and a boat that is fetching it would be required to change course as a result of the hail.

20.2 Responding

- (a) After a boat hails, she shall give a hailed boat time to respond.
- (b) A hailed boat shall respond even if the hail breaks rule [20.1](#).
- (c) A hailed boat shall respond either by tacking as soon as possible, or by immediately replying 'You tack' and then giving the hailing boat [room](#) to tack and avoid her.
- (d) When a hailed boat responds, the hailing boat shall tack as soon as possible.
- (e) From the time a boat hails until she has tacked and avoided a hailed boat, rule [18.2](#) does not apply between them.

20.3 Passing On a Hail to an Additional Boat

When a boat has been hailed for [room](#) to tack and she intends to respond by tacking, she may hail another boat on the same [tack](#) for [room](#) to tack and avoid her. She may hail even if her hail does not meet the conditions of rule [20.1](#). Rule [20.2](#) applies between her and a boat she hails.

20.4 Additional Requirements for Hails

- (a) When conditions are such that a hail may not be heard, the boat shall also make a signal that clearly indicates her need for [room](#) to tack or her response.
- (b) The notice of race may specify an alternative communication for a boat to indicate her need for [room](#) to tack or her response, and require boats to use it.

SECTION D OTHER RULES

When rule [21](#) or [22](#) applies between two boats, [Section A](#) rules do not.

21 STARTING ERRORS; TAKING PENALTIES; BACKING A SAIL

- 21.1** A boat sailing towards the pre-start side of the starting line or one of its extensions after her starting signal to [start](#) or to comply

with rule [30.1](#) shall [keep clear](#) of a boat not doing so until her hull is completely on the pre-start side.

21.2 A boat taking a penalty shall [keep clear](#) of one that is not.

21.3 A boat moving astern, or sideways to windward, through the water by backing a sail shall [keep clear](#) of one that is not.

22 CAPSIZED, ANCHORED OR AGROUND; RESCUING

If possible, a boat shall avoid a boat that is capsized or has not regained control after capsizing, is anchored or aground, or is trying to help a person or vessel in danger. A boat is capsized when her masthead is in the water.

23 INTERFERING WITH ANOTHER BOAT

23.1 If reasonably possible, a boat not [racing](#) shall not interfere with a boat that is [racing](#).

23.2 If reasonably possible, a boat shall not interfere with a boat that is taking a penalty, sailing on another leg or subject to rule [21.1](#). However, after the starting signal this rule does not apply when the boat is sailing her [proper course](#).

PART 3

CONDUCT OF A RACE

25 NOTICE OF RACE, SAILING INSTRUCTIONS AND SIGNALS

- 25.1** The notice of race shall be made available to each boat that enters an event before she enters. The sailing instructions shall be made available to each boat before a race begins.
- 25.2** The meanings of the visual and sound signals stated in Race Signals shall not be changed except under rule [86.1\(b\)](#). The meanings of any other signals that may be used shall be stated in the notice of race or sailing instructions.
- 25.3** When the race committee is required to display a flag as a visual signal, it may use a flag or other object of a similar appearance.

26 STARTING RACES

Races shall be started by using the following signals. Times shall be taken from the visual signals; the absence of a sound signal shall be disregarded.

<i>Minutes before starting signal</i>	<i>Visual signal</i>	<i>Sound signal</i>	<i>Means</i>
5*	Class flag	One	Warning signal
4	P, I, Z, Z with I, U, or black flag	One	Preparatory signal
1	Preparatory flag removed	One long	One minute
0	Class flag removed	One	Starting signal

*or as stated in the notice of race or sailing instructions

The warning signal for each succeeding class shall be made with or after the starting signal of the preceding class.

Australian Sailing prescribes that when handicap starts apply a boat's preparatory signal is deemed made four minutes before the boat's starting time.

27 OTHER RACE COMMITTEE ACTIONS BEFORE THE STARTING SIGNAL

- 27.1** No later than the warning signal, the race committee shall signal or otherwise designate the course to be sailed if the sailing instructions have not stated the course, and it may replace one course signal with another and signal that wearing personal flotation devices is required (display flag Y with one sound).
- 27.2** No later than the preparatory signal, the race committee may move a starting [mark](#).
- 27.3** Before the starting signal, the race committee may for any reason [postpone](#) (display flag [AP](#), [AP over H](#), or [AP over A](#), with two sounds) or [abandon](#) the race (display flag [N](#), or [N over H](#), or [N over A](#) with three sounds).

28 SAILING THE COURSE

- 28.1** A boat shall [sail the course](#).
- 28.2** A boat may correct any errors in *sailing the course*, provided she has not [finished](#).

29 RECALLS

29.1 Individual Recall

When at a boat's starting signal any part of her hull is on the course side of the starting line or she must comply with rule [30.1](#), the race committee shall promptly display flag X with one sound. The flag shall be displayed until the hull of each such boat has been completely on the pre-start side of the starting line or one of its extensions, and until all such boats have complied with rule [30.1](#) if it applies, but no later than four minutes after the starting signal or one minute before any later starting signal, whichever is earlier. If rule [29.2](#), [30.3](#) or [30.4](#) applies this rule does not.

29.2 General Recall

When at the starting signal the race committee is unable to identify boats that are on the course side of the starting line or to which rule [30](#) applies, or there has been an error in the starting procedure, the race committee may signal a general recall (display the First Substitute with two sounds). The warning signal for a new start for the recalled class shall be made one minute after the First Substitute is removed (one sound), and the starts for any succeeding classes shall follow the new start.

30 STARTING PENALTIES

30.1 I Flag Rule

If flag I has been displayed, and any part of a boat's hull is on the course side of the starting line or one of its extensions during the last minute before her starting signal, she shall sail across an extension so that her hull is completely on the pre-start side before she [starts](#).

30.2 Z Flag Rule

If flag Z has been displayed, no part of a boat's hull shall be in the triangle formed by the ends of the starting line and the first [mark](#) during the last minute before her starting signal. If a boat breaks this rule and is identified, she shall receive, without a hearing, a 20% Scoring Penalty calculated as stated in rule [44.3\(c\)](#). She shall be penalized even if the race is restarted or resailed, but not if it is [postponed](#) or [abandoned](#) before the starting signal. If she is similarly identified during a subsequent attempt to start the same race, she shall receive an additional 20% Scoring Penalty.

30.3 U Flag Rule

If flag U has been displayed, no part of a boat's hull shall be in the triangle formed by the ends of the starting line and the first [mark](#) during the last minute before her starting signal. If a boat breaks this rule and is identified, she shall be disqualified without a hearing, but not if the race is restarted or resailed.

30.4 Black Flag Rule

If a black flag has been displayed, no part of a boat's hull shall be in the triangle formed by the ends of the starting line and the first [mark](#) during the last minute before her starting signal. If a boat breaks this rule and is identified, she shall be disqualified without a hearing, even if the race is restarted or resailed, but not if it is [postponed](#) or [abandoned](#) before the starting signal. If a general recall is signalled or the race is [abandoned](#) after the starting signal, the race committee shall display her sail number before the next warning signal for that race, and if the race is restarted or resailed she shall not sail in it. If she does so, her disqualification shall not be excluded in calculating her series score.

31 TOUCHING A MARK

While [racing](#), a boat shall not touch a starting [mark](#) before [starting](#), a [mark](#) that begins, bounds or ends the leg of the course on which she is sailing, or a finishing [mark](#) after [finishing](#).

32 SHORTENING OR ABANDONING AFTER THE START

32.1 After the starting signal, the race committee may shorten the course or [abandon](#) the race:

- (a) because of foul weather,
- (b) because of insufficient wind making it unlikely that any boat will [sail the course](#) within the race time limit,
- (c) because a [mark](#) is missing or out of position, or
- (d) for any other reason directly affecting the safety or fairness of the competition.

In addition, the race committee may shorten the course so that other scheduled races can be sailed, or [abandon](#) the race because of an error in the starting procedure. However, after one boat has *sailed the course* within the race time limit, if any, the race committee shall not [abandon](#) the race without considering the consequences for all boats in the race or series.

32.2 To shorten the course, the race committee shall display flag S with two sounds before the first boat crosses the finishing line. If the course is shortened, the finishing line shall be,

- (a) at a rounding mark, between the mark and a staff displaying flag S;
- (b) a line the course requires boats to cross; or
- (c) at a gate, between the gate marks.

32.3 To abandon a race in progress, the race committee shall display flag N, N over H, or N over A, with three sounds.

33 CHANGING THE NEXT LEG OF THE COURSE

While boats are racing, the race committee may change a leg of the course that begins at a rounding mark or at a gate by changing the position of the next mark (or the finishing line) and signalling all boats before they begin the leg. The next mark need not be in position at that time.

- (a) If the direction of the leg will be changed, the signal shall be the display of flag C with repetitive sounds and one or both of
 - (1) the new compass bearing,
 - (2) a green triangle for a change to starboard or a red rectangle for a change to port.
- (b) If the length of the leg will be changed, the signal shall be the display of flag C with repetitive sounds and a ‘-’ if the length will be decreased or a ‘+’ if it will be increased.
- (c) Subsequent legs may be changed without further signalling to maintain the course shape.

34 MARK MISSING

If a mark is missing or out of position while boats are racing, the race committee shall, if possible,

- (a) move it to its correct position or replace it with a new one of similar appearance, or
- (b) replace it with an object displaying flag M and make repetitive sounds.

35 RACE TIME LIMIT AND SCORES

If one boat *sails the course* within the time limit for that race, if any, all boats that [finish](#) shall be scored according to their finishing places unless the race is [abandoned](#). If no boat *sails the course* within the race time limit, the race committee shall [abandon](#) the race.

36 RACES RESTARTED OR RESAILED

If a race is restarted or resailed, a breach of a [rule](#) in the original race, or in any previous restart or resail of that race, shall not

- (a) prohibit a boat from competing unless she has broken rule [30.4](#); or
- (b) cause a boat to be penalized except under rule [2](#), [30.2](#), [30.4](#) or [69](#) or under rule [14](#) when she has caused injury or serious damage.

37 SEARCH AND RESCUE INSTRUCTIONS

When the race committee displays [flag V](#) with one sound, all boats and official and support vessels shall, if possible, monitor the race committee communication channel for search and rescue instructions.

PART 4

OTHER REQUIREMENTS WHEN RACING

*Part 4 rules apply only to boats **racing** unless the rule states otherwise.*

SECTION A

GENERAL REQUIREMENTS

40 PERSONAL FLOTATION DEVICES

40.1 Basic Rule

When rule 40.1 is made applicable by rule [40.2](#), each competitor shall wear a personal flotation device except briefly while changing or adjusting clothing or personal equipment. Wet suits and dry suits are not personal flotation devices.

40.2 When Rule 40.1 Applies

Rule [40.1](#) applies if

- (a) [flag Y](#) was displayed afloat with one sound before or with the warning signal, while *racing* in that race;
- (b) [flag Y](#) was displayed ashore with one sound, at all times while afloat that day; or
- (c) a rule in the class rules, notice of race or sailing instructions states that it applies.

41 OUTSIDE HELP

A boat shall not receive help from any outside source, except

- (a) help for a crew member who is ill, injured or in danger;
- (b) after a collision, help from the crew of the other vessel to get clear;
- (c) help in the form of information freely available to all boats;
- (d) unsolicited information from a disinterested source, which may be another boat in the same race.

42 PROPULSION

42.1 Basic Rule

Except when permitted in rule [42.3](#) or [45](#), a boat shall compete by using only the wind and water to increase, maintain or decrease her speed. Her crew may adjust the trim of sails and hull, and perform other acts of seamanship, but shall not otherwise move their bodies to propel the boat.

42.2 Prohibited Actions

Without limiting the application of rule [42.1](#), these actions are prohibited:

- (a) pumping: repeated fanning of any sail either by pulling in and releasing the sail or by vertical or athwartship body movement;
- (b) rocking: repeated rolling of the boat, induced by
 - (1) body movement,
 - (2) repeated adjustment of the sails or centreboard, or
 - (3) steering;
- (c) ooching: sudden forward body movement, stopped abruptly;
- (d) sculling: repeated movement of the helm that is either forceful or that propels the boat forward or prevents her from moving astern;
- (e) repeated tacks or gybes unrelated to changes in the wind or to tactical considerations.

42.3 Exceptions

- (a) A boat may be rolled to facilitate steering.
- (b) A boat's crew may move their bodies to exaggerate the rolling that facilitates steering the boat through a tack or a gybe, provided that, just after the tack or gybe is completed, the boat's speed is not greater than it would have been in the absence of the tack or gybe.
- (c) When surfing (rapidly accelerating down the front of a wave), planing or foiling is possible,

- (1) to initiate surfing or planing, each sail may be pulled in only once for each wave or gust of wind, or
- (2) to initiate foiling, each sail may be pulled in any number of times.
- (d) When a boat is above a close-hauled course and either stationary or moving slowly, she may scull to turn to a close-hauled course.
- (e) If a batten is inverted, the boat's crew may pump the sail until the batten is no longer inverted. This action is not permitted if it clearly propels the boat.
- (f) A boat may reduce speed by repeatedly moving her helm.
- (g) Any means of propulsion may be used to help a person or another vessel in danger.
- (h) To get clear after grounding or colliding with a vessel or object, a boat may use force applied by her crew or the crew of the other vessel and any equipment other than a propulsion engine. However, the use of an engine may be permitted by rule [42.3\(i\)](#).
- (i) Sailing instructions may, in stated circumstances, permit propulsion using an engine or any other method, provided the boat does not gain a significant advantage in the race.

Note: Interpretations of rule 42 are available on the [World Sailing website](#) or by mail upon request.

43 EXONERATION

- 43.1**
- (a) When as a consequence of breaking a [rule](#) a boat has compelled another boat to break a [rule](#), the other boat is exonerated for her breach.
 - (b) When a boat is sailing within the [room](#) or [mark-room](#) to which she is entitled and, as a consequence of an incident with a boat required to give her that [room](#) or [mark-room](#), she breaks a rule of [Section A](#) of [Part 2](#), rule [15](#), [16](#), or [31](#), she is exonerated for her breach.
 - (c) A right-of-way boat, or one sailing within the [room](#) or [mark-room](#) to which she is entitled, is exonerated for breaking rule [14](#) if the contact does not cause damage or injury.

43.2 A boat exonerated for breaking a [rule](#) need not take a penalty and shall not be penalized for breaking that [rule](#).

44 PENALTIES AT THE TIME OF AN INCIDENT

44.1 Taking a Penalty

A boat may take a Two-Turns Penalty when she may have broken one or more rules of [Part 2](#) in an incident while [racing](#). She may take a One-Turn Penalty when she may have broken rule [31](#). Alternatively, the notice of race or sailing instructions may specify the use of the Scoring Penalty or some other penalty, in which case the specified penalty shall replace the One-Turn and the Two-Turns Penalty. However,

- (a) when a boat may have broken a rule of [Part 2](#) and rule [31](#) in the same incident she need not take the penalty for breaking rule [31](#);
- (b) if the boat caused injury or serious damage or, despite taking a penalty, gained a significant advantage in the race or series by her breach her penalty shall be to retire.

44.2 One-Turn and Two-Turns Penalties

After getting well clear of other boats as soon after the incident as possible, a boat takes a One-Turn or Two-Turns Penalty by promptly making the required number of turns in the same direction, each turn including one tack and one gybe. When a boat takes the penalty at or near the finishing line, her hull shall be completely on the course side of the line before she [finishes](#).

44.3 Scoring Penalty

- (a) If specified in the notice of race or sailing instructions, a boat takes a Scoring Penalty by displaying a yellow flag at the first reasonable opportunity after the incident.
- (b) When a boat has taken a Scoring Penalty, she shall keep the yellow flag displayed until [finishing](#) and call the race committee's attention to it at the finishing line. At that time she shall also inform the race committee of the identity of the other boat involved in the incident. If this is impracticable, she shall do so at the first reasonable opportunity and within the protest time limit.

- (c) The race score for a boat that takes a Scoring Penalty shall be the score she would have received without that penalty, made worse by the number of points stated in the notice of race or sailing instructions. When the number of points is not stated, the penalty shall be 20% of the score for Did Not *Finish*, rounded to the nearest tenth of a point (0.05 rounded upward). The scores of other boats shall not be changed; therefore, two boats may receive the same score. However, the penalty shall not cause the boat's score to be worse than the score for Did Not *Finish*.

45 HAULING OUT; MAKING FAST; ANCHORING

A boat shall be afloat and off moorings at her preparatory signal. Thereafter, she shall not be hauled out or made fast except to bail out, reef sails or make repairs. She may anchor or the crew may stand on the bottom. She shall recover the anchor before continuing in the race unless she is unable to do so.

46 PERSON IN CHARGE

A boat shall have on board a person in charge designated by the member or organization that entered the boat. See rule [75](#).

All persons on board a boat while [racing](#) shall be members of a Club affiliated to Australian Sailing and have an Australian Sailing number, or hold a valid Sail Pass, or if an international competitor, be a member of club affiliated to a World Sailing recognised Member National Authority.

47 TRASH DISPOSAL

Competitors and [support persons](#) shall not intentionally put trash in the water. This rule applies at all times while afloat. The penalty for a breach of this rule may be less than disqualification.

SECTION B

EQUIPMENT-RELATED REQUIREMENTS

48 LIMITATIONS ON EQUIPMENT AND CREW

Australian Sailing prescribes that a boat shall also carry the equipment specified in and otherwise comply with the Special Regulations of Australian Sailing as set out in Part 1 or 2 as appropriate.

- 48.1** A boat shall use only the equipment on board at her preparatory signal.
- 48.2** No person on board shall intentionally leave, except when ill or injured, or to help a person or vessel in danger, or to swim. A person leaving the boat by accident or to swim shall be back in contact with the boat before the crew resumes sailing the boat to the next [mark](#).

49 CREW POSITION; LIFELINES

- 49.1** Competitors shall use no device designed to position their bodies outboard, other than hiking straps and stiffeners worn under the thighs.
- 49.2** When lifelines are required by the class rules or any other [rule](#), competitors shall not position any part of their torsos outside them, except briefly to perform a necessary task. However, on boats equipped with upper and lower lifelines, competitors sitting facing outboard with their waist inside the lower lifeline may have the upper part of their body outside the upper lifeline. Unless a class rule or any other [rule](#) specifies a maximum deflection, lifelines shall be taut. If the class rules do not specify the material or minimum diameter of lifelines, they shall comply with the corresponding specifications in the *World Sailing Offshore Special Regulations*.

Note: Those regulations are available on the World Sailing website.

50 COMPETITOR CLOTHING AND EQUIPMENT

- 50.1** (a) Competitors shall not wear or carry clothing or equipment for the purpose of increasing their weight.
- (b) Furthermore, a competitor's clothing and equipment shall not weigh more than 8 kilograms, excluding a crew harness (as defined in *The Equipment Rules of Sailing*) and clothing (including footwear) worn only below the knee. Class rules or the notice of race may specify a lower

weight or a higher weight up to 10 kilograms. Class rules may include footwear and other clothing worn below the knee within that weight. A crew harness shall have positive buoyancy in fresh water and shall not weigh more than 2 kilograms, except that class rules may specify a higher weight up to 4 kilograms. Weights shall be determined as required by Appendix H.

- (c) A crew harness shall allow the competitor, at any time, to easily disconnect the harness from the trapeze or attachment to the boat.

50.2 Rules [50.1\(b\)](#) and [50.1\(c\)](#) do not apply to boats required to be equipped with lifelines.

51 MOVABLE BALLAST

All movable ballast, including sails that are not set, shall be properly stowed. Water, dead weight or ballast shall not be moved for the purpose of changing trim or stability. Floorboards, bulkheads, doors, stairs and water tanks shall be left in place and all cabin fixtures kept on board. However, bilge water may be bailed out.

52 MANUAL POWER

A boat's standing rigging, running rigging, spars and movable hull appendages shall be adjusted and operated only by the power provided by the crew.

53 SKIN FRICTION

A boat shall not eject or release a substance, such as a polymer, or have specially textured surfaces that could improve the character of the flow of water inside the boundary layer.

54 FORESTAYS AND HEADSAIL TACKS

Forestays and headsail tacks, except those of spinnaker staysails when the boat is not close-hauled, shall be attached approximately on a boat's centreline.

55 SETTING AND SHEETING SAILS

55.1 Changing Sails

When headsails or spinnakers are being changed, a replacing sail may be fully set and trimmed before the replaced sail is lowered. However, only one mainsail and, except when changing, only one spinnaker shall be carried set at a time.

55.2 Spinnaker Poles; Whisker Poles

Only one spinnaker pole or whisker pole shall be used at a time except when gybing. When in use, it shall be attached to the foremost mast spar (as defined in [The Equipment Rules of Sailing](#)).

55.3 Sheeting Sails

No sail shall be sheeted over or through any device that exerts outward pressure on a sheet or clew of a sail at a point from which, with the boat upright, a vertical line would fall outside the hull or deck, except:

- (a) a headsail clew may be connected (as defined in [The Equipment Rules of Sailing](#)) to a whisker pole, provided that a spinnaker is not set;
- (b) any sail may be sheeted to or led above a boom that is regularly used for a sail and is permanently attached to the mast from which the head of the sail is set;
- (c) a headsail may be sheeted to its own boom that requires no adjustment when tacking; and
- (d) the boom of a sail may be sheeted to a bumkin.

55.4 Headsails and Spinnakers

For the purposes of rules [54](#) and [55](#) and [Appendix G](#), the definitions of 'headsail' and 'spinnaker' in *The Equipment Rules of Sailing* shall be used.

Note: The Equipment Rules of Sailing are available on the [World Sailing website](#).

56 FOG SIGNALS AND LIGHTS; TRAFFIC SEPARATION SCHEMES; TRACKING SYSTEMS

56.1 When so equipped, a boat shall sound fog signals and show lights as required by the *International Regulations for*

Preventing Collisions at Sea (IRPCAS) or applicable government rules.

- 56.2** A boat shall comply with rule 10, [Traffic Separation Schemes](#), of the *IRPCAS*.

Note: Appendix TS, [Traffic Separation Schemes](#), is available on the World Sailing website. The notice of race may change rule [56.2](#) by stating that Section A, Section B or Section C of [Appendix TS](#) applies.

- 56.3** When a [rule](#) requires a boat to be equipped with an Automatic Identification System transponder or any other tracking device, it shall not be turned off or its effectiveness intentionally reduced.

PART 5

PROTESTS, REDRESS, HEARINGS, MISCONDUCT AND APPEALS

A hearing request form and a hearing decision form are available on the World Sailing website at: www.sailing.org/racingrules

The Racing Rules of Sailing *does not require a particular hearing request form to be used.*

SECTION A

PROTESTS; REDRESS; SUPPORT PERSONS

60 PROTESTS

60.1 Right to Protest

A boat or [committee](#) may protest a boat.

60.2 Intention to Protest

(a) If a [protest](#) concerns an incident observed by the protestor in the racing area:

- (1) If the protestor is a boat, she shall hail 'Protest' and, if her hull length is longer than 6 metres, conspicuously display a red flag, at the first reasonable opportunity for each. She shall display the flag until she is no longer [racing](#).
- (2) If the protestor is a [committee](#), it shall inform the boat after the race within the protest time limit of its intention to protest her.

(b) However, if

- (1) the protestee is not within hailing distance at the time of the incident,
- (2) the incident was an error in *sailing the course*,

- (3) the incident was not observed by the protestor in the racing area, or
- (4) a protest committee decides to protest a boat under rule [60.4\(c\)](#),

then the only requirement for the protestor is to inform the protestee of its intention to protest at the first reasonable opportunity.

- (c) If at the time of the incident it is obvious to a protesting boat that a member of either crew is in danger, or that injury or serious damage has resulted, rules [60.2\(a\)](#) and [60.2\(b\)](#) do not apply to her, but she shall attempt to inform the other boat within the protest time limit of her intention to protest.
- (d) A [committee](#) may inform a boat of its intention to protest by posting a notice on the official notice board.

60.3 Delivering a Protest

- (a) When delivered, a [protest](#) shall be in writing and identify the protestor, the protestee, and the incident.
- (b) A [protest](#) shall be delivered to the race office (or by such other method as stated in the sailing instructions) within the protest time limit unless the protest committee decides there is good reason to extend the time. The protest time limit is
 - (1) for [protests](#) about an incident observed in the racing area, two hours after the last boat in the race [finishes](#), or
 - (2) for other [protests](#), two hours after the relevant information is available to the protestor.

However, if the sailing instructions state a different protest time limit, then that time limit applies instead.

60.4 Protest Validity

- (a) A [protest](#) is invalid
 - (1) if it does not comply with the definition [Protest](#) or rule [60.2](#) or [60.3](#),

- (2) if it is from a boat that alleges a breach of a rule of [Part 2](#) or rule [31](#), but she was not involved in it or did not see the incident, or
 - (3) as far as it alleges a breach of rule [69](#) or a Regulation referred to in rule [6](#), unless permitted by the Regulation concerned.
- (b) A [protest](#) is invalid also if it is from a [committee](#) and is based on information from
- (1) a request for redress,
 - (2) an invalid [protest](#), or
 - (3) a report from a person with a [conflict of interest](#) (other than a representative of the boat herself).
- (c) However, rule [60.4\(b\)](#) does not apply to a [protest](#) from
- (1) the protest committee if it learns of an incident involving a boat that may have resulted in injury or serious damage,
 - (2) the protest committee if it learns during the hearing of a valid [protest](#) that the boat, although not a [party](#) to the hearing, was involved in the incident and may have broken a [rule](#), or
 - (3) the technical committee if it has first conducted an inspection and decided a boat or personal equipment does not comply with the class rules or rule [50](#).

60.5 Protest Decisions

- (a) The protest committee shall conduct a hearing as required by rule [63](#) to decide a [protest](#).
- (b) A boat shall only be penalized
 - (1) at a protest hearing to which she is a [party](#),
 - (2) under rule [62.4](#), [64](#) or [69](#), or
 - (3) under a [rule](#) which expressly states that a penalty may be applied without a hearing.
- (c) If the protest committee decides that a boat has broken a [rule](#) it shall disqualify her whether or not the applicable [rule](#)

was mentioned in the [protest](#). However, the boat shall not be disqualified if

- (1) she is exonerated or some other penalty applies,
- (2) the boat has already taken an applicable penalty, in which case she shall not be penalized further unless the penalty for a [rule](#) she broke is disqualification that is not excludable,
- (3) the race is restarted or resailed, in which case rule [36](#) applies, or
- (4) she broke a class rule and rule [60.5\(d\)\(1\)](#) applies.

If a boat has broken a [rule](#) when not [racing](#), her penalty shall apply to the race sailed nearest in time to the incident.

- (d) If the protest committee decides that a boat has broken a class rule:
 - (1) the boat shall not be penalized if any deviations in excess of tolerances specified in the class rules were caused by damage or normal wear and they did not improve the performance of the boat,
 - (2) the boat shall not *race* again until any such deviations have been corrected unless the protest committee decides there is, or has been, no reasonable opportunity to do so,
 - (3) any breach of the same rule in earlier races in the same event may have the same penalty imposed for all such races without further [protest](#), and
 - (4) the boat may compete in subsequent races without changes to the boat, but only if she states in writing that she intends to appeal. If she fails to appeal, or the appeal is not successful, she shall be disqualified without a hearing from all subsequent races in which she competed.

61 REDRESS

61.1 Requesting or Considering Redress

- (a) A boat may request redress.

- (b) The race committee or the technical committee may request redress for a boat.
- (c) The protest committee may call a hearing to consider redress for a boat.

61.2 Requests for Redress

- (a) A request for redress shall be in writing and identify the reason for making it.
- (b) A request shall be delivered to the race office (or by such other method as stated in the sailing instructions):
 - (1) if it is based on an incident in the racing area, within the protest time limit or two hours after the incident (whichever is later),
 - (2) if it is based on a protest committee decision on the last scheduled day of racing, no later than 30 minutes after the decision was posted, or
 - (3) for all other requests, as soon as reasonably possible after the relevant information is available.

However, the protest committee shall extend the time if there is good reason to do so.

61.3 Invalid Requests

A request for redress is invalid if it does not comply with rule [61.2](#).

61.4 Redress Decisions

- (a) The protest committee shall conduct a hearing as required by rule [63](#) to decide whether to grant redress.
- (b) A boat is entitled to redress if her score or place in a race or series has been made, or may be made, significantly worse through no fault of her own by
 - (1) an improper action or improper omission of a [committee](#) or the organizing authority, but not by a protest committee decision when the boat was a [party](#) to the hearing,
 - (2) injury or physical damage because of the action of a boat that was breaking a rule of [Part 2](#) and took an appropriate penalty or was penalized,

- (3) injury or physical damage because of the action of a vessel not [racing](#) that was required to [keep clear](#) or is determined to be at fault under the *IRPCAS* or a government right-of-way rule,
 - (4) giving help (except to herself or her crew) in compliance with rule 1.1, or
 - (5) an action of another boat, or a crew member or [support person](#) of that boat, that resulted in a penalty under rule [2](#) or a penalty or warning under rule [69](#).
- (c) If a boat is entitled to redress, the protest committee shall make as fair an arrangement as possible for all boats affected, whether or not they asked for redress. This may be to adjust the scoring (see rule [A9](#) for examples) or finishing times of boats, to [abandon](#) the race, to let the results stand or to make some other arrangement.
- (d) If there is doubt about the facts or probable results of any arrangement for the race or series, especially before [abandoning](#) the race, the protest committee shall take evidence from appropriate sources.

62 SUPPORT PERSONS

- 62.1** Upon receipt of a report from a boat or a [committee](#), or based on its own observation or information from any source, including evidence taken during a hearing, the protest committee may call a hearing to consider whether a [support person](#) has broken a [rule](#).
- 62.2** If the protest committee decides to call a hearing, it shall conduct a hearing as required by rule [63](#) and may appoint a person to present the allegations.
- 62.3** If the protest committee decides that a [support person](#) who is a [party](#) to the hearing has broken a [rule](#), it may
- (a) issue a warning,
 - (b) exclude the person from the event or venue or remove any privileges or benefits, or
 - (c) take other action within its jurisdiction as provided by the [rules](#).

- 62.4** In addition, if the protest committee decides that
- (a) a boat may have gained a competitive advantage as the result of the breach by the [support person](#), or
 - (b) the [support person](#) committed a further breach after the protest committee warned a boat in writing, following a previous hearing, that a penalty may be imposed,
- then the protest committee may also penalize a boat that is a [party](#) to the hearing for the breach of a [rule](#) by a [support person](#) by changing the boat's score in a single race, up to and including disqualification.

SECTION B

HEARINGS AND MAKING DECISIONS

Rule 63 applies to all hearings conducted by the [protest committee](#).

63 CONDUCT OF HEARINGS

63.1 Rights of Parties

- (a) All *parties* to a hearing shall be
 - (1) informed of the time and place of the hearing,
 - (2) given access to the [protest](#), request for redress, or report to be considered at the hearing,
 - (3) allowed reasonable time to prepare for the hearing, and
 - (4) allowed to have a representative present throughout the hearing of the evidence but, in a [protest](#) involving a breach of a rule of [Part 2](#), [3](#) or [4](#), the representatives of boats shall have been on board at the time of the incident unless there is good reason for the protest committee to decide otherwise.
- (b) If a [party](#) does not come to a hearing, the protest committee may proceed with the hearing in their absence.

63.2 Hearings

- (a) The protest committee shall hear each [protest](#) or request delivered unless it allows it to be withdrawn.

- (b) The protest committee may combine hearings which arise from the same or very closely connected incidents into one hearing. However, a hearing under rule [69](#) shall not be combined with any other type of hearing.
- (c) If the validity requirements are met, the protest committee may change the type of case if it is appropriate to do so having considered the information in the case, including any evidence given during a hearing.
- (d) If the protest committee decides to protest a boat under rule [60.4\(c\)\(2\)](#), it shall close the current hearing, deliver a *protest* in accordance with the *rules*, and then hear the original and new *protests* together.
- (e) A hearing involving *parties* in different events conducted by different organizing authorities shall be heard by a protest committee acceptable to those authorities.

63.3 Conflict of Interest

- (a) A protest committee member shall declare any possible *conflict of interest* as soon as possible after becoming aware of it.
- (b) A *party* to the hearing who believes a protest committee member has a *conflict of interest* shall object as soon as possible.
- (c) A protest committee member with a *conflict of interest* shall not be a member of the protest committee for the hearing, unless:
 - (1) all *parties* consent, or
 - (2) the protest committee decides that the *conflict of interest* is not significant.

However, for World Sailing major events, or for other events as prescribed by the national authority of the venue, a person who has a *conflict of interest* shall not be a member of the protest committee.
- (d) When deciding whether a *conflict of interest* is significant, the protest committee shall consider
 - (1) the views of the *parties*,
 - (2) the level of the conflict,

- (3) the level of the event,
 - (4) the importance to each *party* of the case, and
 - (5) the overall perception of fairness.
- (e) Any written information provided under rule [63.6\(b\)](#) shall include any *conflict of interest* declared by a protest committee member, and any decision by the protest committee under rule [63.3\(c\)\(2\)](#).

63.4 Hearing Procedure

- (a) The protest committee shall first consider validity. The hearing shall be closed if
- (1) a *protest* or request is invalid, or
 - (2) a *protest* was made under rule [60.4\(c\)\(1\)](#) and there was no injury or serious damage.
- (b) The protest committee shall take the evidence of the *parties* present at the hearing, their witnesses, and any other evidence it considers necessary. Hearsay evidence is admissible. However, the protest committee may exclude evidence which is irrelevant or unduly repetitive.
- (c) A *party* present at the hearing may question any person who gives evidence.
- (d) A member of the protest committee who saw the incident shall, as soon as reasonably possible, declare this fact to the *parties* attending the hearing.
- (e) A witness shall be excluded from the hearing when not giving evidence, except for a witness who:
- (1) is also a *party*, or
 - (2) is a member of the protest committee.

63.5 Decisions

- (a) The protest committee shall consider the evidence and decide what weight to give it. It shall then find the facts based on the balance of probabilities (unless an applicable *rule* requires otherwise), and then apply the *rules* to those facts to make its conclusions and a decision.

- (b) Decisions shall be made by simple majority vote. When there is an equal division of votes, the chair of the hearing may cast an additional vote.
- (c) If there is a conflict between
 - (1) two or more [rules](#) that must be resolved before a decision can be made, and
 - (2) those [rules](#) are in the notice of race, the sailing instructions, or any of the other documents that govern the event under item (g) of the definition [Rule](#), then the protest committee shall apply the [rule](#) that it believes will provide the fairest result for all boats affected.
- (d) If the protest committee is in doubt about the meaning of a class rule, it shall refer its questions, together with the relevant facts, to an authority responsible for interpreting the rule. In making its decision, the protest committee is bound by the authority's reply.

63.6 Informing the Parties and Others

- (a) The protest committee shall promptly inform the *parties* to the hearing of the facts found, the applicable [rules](#), the decision, the reasons for it, any penalties imposed, and any redress given.
- (b) If requested by a [party](#) in writing within seven days of being informed of the decision, the above information shall be provided promptly in writing and the protest committee may, if it considers it relevant to do so, prepare or endorse a diagram.
- (c) The protest committee may publish the above information after any hearing, including a hearing under rule [69](#), unless it decides there is good reason not to do so.
- (d) The protest committee may direct that the above information is to be confidential to the *parties*.
- (e) If the protest committee penalizes a boat under a class rule, it shall send the above information to the relevant class rule authorities.

63.7 Reopening a Hearing

- (a) The protest committee may reopen a hearing if it decides
- (1) a party was unavoidably absent from the hearing,
 - (2) it may have made a significant error, or
 - (3) significant new evidence has become available within a reasonable time.

However, a protest committee shall reopen a hearing when required to do so by the national authority under rule 71.3 or R5.

- (b) A party to the hearing may request a reopening by delivering a written request to the race office (or by such other method as stated in the sailing instructions) no later than 24 hours after being informed of the decision. The request shall identify the reason for making it. However, on the last scheduled day of racing the request shall be delivered
- (1) within the protest time limit if the requesting party was informed of the decision on the previous day;
 - (2) no later than 30 minutes after the party was informed of the decision on that day.

A request that does not comply with this rule is invalid.

- (c) The protest committee shall consider all requests to reopen a hearing. When a request to reopen is being considered, or when the hearing is reopened,
- (1) if based only on new evidence, a majority of the members of the protest committee shall, if practicable, be members of the original committee;
 - (2) if based on a significant error, the protest committee shall, if practicable, have at least one new member.

64 DISCRETIONARY PENALTIES

When a boat reports within the protest time limit that she has broken a rule which is subject to a discretionary penalty, the protest committee shall decide the appropriate penalty having first considered the evidence that it considers appropriate. There is no requirement to hold a hearing.

65 LEGAL LIABILITY AND COSTS

65.1 Questions of legal liability arising from a breach of a [rule](#), including any claims for monetary damages, shall be governed by prescriptions, if any, of the national authority.

Australian Sailing prescribes that the question of damages is for the appropriate court of law.

65.2 Any measurement costs arising from a [protest](#) involving a class rule shall be paid by the unsuccessful [party](#) unless the protest committee decides otherwise.

Note: There are no rules 66 to 68.

SECTION C MISCONDUCT

69 MISCONDUCT

69.1 Obligation not to Commit Misconduct; Resolution

- (a) A competitor, boat owner or [support person](#) shall not commit an act of misconduct.
- (b) Misconduct is:
 - (1) conduct that is a breach of good manners, a breach of good sportsmanship, or unethical behaviour; or
 - (2) conduct that may bring, or has brought, the sport into disrepute.
- (c) An allegation of a breach of rule [69.1\(a\)](#) shall be resolved in accordance with the provisions of rule [69](#). It shall not be grounds for a [protest](#).

69.2 Action by a Protest Committee

- (a) A protest committee acting under this rule shall have at least three members.
- (b) When a protest committee, from its own observation or from information received from any source, including evidence taken during a hearing, believes a person may

have broken rule [69.1\(a\)](#), it shall decide whether or not to call a hearing.

- (c) When the protest committee needs more information to make the decision to call a hearing, it shall consider appointing a person or persons to conduct an investigation. These investigators shall not be members of the protest committee that will decide the matter.
- (d) When an investigator is appointed, all relevant information gathered by the investigator, favourable or unfavourable, shall be disclosed to the protest committee, and if the protest committee decides to call a hearing, to the *parties*.
- (e) If the protest committee decides to call a hearing, it shall promptly inform the person in writing of the alleged breach and of the time and place of the hearing and follow the procedures in rule [63](#), except that:
 - (1) unless a person has been appointed by World Sailing, a person may be appointed by the protest committee to present the allegation.
 - (2) a person against whom an allegation has been made under this rule shall be entitled to attend the hearing with an advisor and a representative who may act on the person's behalf.
- (f) If a *party*
 - (1) provides good reason for being unable to come to the hearing at the scheduled time, the protest committee shall reschedule it; or
 - (2) does not provide good reason and does not come to the hearing, the protest committee may conduct it without that *party* present.
- (g) The standard of proof to be applied is the test of the comfortable satisfaction of the protest committee, bearing in mind the seriousness of the alleged misconduct. However, if the standard of proof in this rule conflicts with the laws of a country, the national authority may, with the approval of World Sailing, change it with a prescription to this rule.

- (h) When the protest committee decides that a competitor or boat owner has broken rule [69.1\(a\)](#), it may take one or more of the following actions
 - (1) issue a warning;
 - (2) change their boat's score in one or more races, including disqualification(s) that may or may not be excluded from her series score;
 - (3) exclude the person from the event or venue or remove any privileges or benefits; and
 - (4) take any other action within its jurisdiction as provided by the [rules](#).
- (i) When the protest committee decides that a [support person](#) has broken rule [69.1\(a\)](#), rules [62.3](#) and [62.4](#) apply.
- (j) If the protest committee
 - (1) imposes a penalty greater than one DNE;
 - (2) excludes the person from the event or venue; or
 - (3) in any other case if it considers it appropriate,it shall report its findings, including the facts found, its conclusions and decision to the national authority of the person or, for major international events listed in the World Sailing Code of Ethics, to World Sailing. If the protest committee has acted under rule [69.2\(f\)\(2\)](#), the report shall also include that fact and the reasons for it.
- (k) If the protest committee decides not to conduct the hearing without a [party](#) present, or if the protest committee has left the event and a report alleging a breach of rule [69.1\(a\)](#) is received, the race committee or organizing authority may appoint the same or a new protest committee to proceed under this rule. If the protest committee decides it is impractical to conduct a hearing, it shall collect all available information and, if the allegation seems justified, make a report to the national authority of the person or, for major international events listed in the World Sailing Code of Ethics, to World Sailing.

69.3 Action by a National Authority and World Sailing

The disciplinary powers, procedures and responsibilities of national authorities and World Sailing that apply are specified in the World Sailing Code of Ethics. National authorities and World Sailing may impose further penalties, including suspension of eligibility, under that code.

SECTION D APPEALS

70 APPEALS AND REQUESTS TO A NATIONAL AUTHORITY

70.1 Unless rule [70.3](#) applies, a *party* to a hearing has the right to appeal the protest committee's decision or its procedures, but not the facts found, to the national authority. In addition, a *party* may appeal when the protest committee has failed to hold a hearing or to make a decision.

70.2 A protest committee may request confirmation or correction of its decision by the national authority.

70.3 There is no right to appeal decisions:

- (a) of an international jury properly constituted under [Appendix N](#),
- (b) that are essential to promptly determine the result of a race that will qualify a boat to compete in a later stage of an event or a subsequent event (and the national authority may prescribe that its approval is required for the use of this rule),
Australian Sailing prescribes that [written approval](#) shall be obtained from Australian Sailing.
- (c) made at an event open only to boats entered by
 - (1) an organization affiliated to the national authority, or a member of such an organization, or
 - (2) a personal member of the national authority, provided the national authority has [granted its approval](#) for the use of this rule, or

- (d) made at an event by a protest committee constituted as required by [Appendix N](#), except that only two members of the protest committee need be International Judges, and provided that the national authority has granted its approval to the use of this rule after consultation with World Sailing.

However, (b), (c) and (d) shall only apply if specified in the notice of race or sailing instructions.

70.4 In rules [70](#) to [72](#), the national authority means the one to which the organizing authority is associated under rule [89.1](#). However, if boats will pass through the waters of more than one national authority while [racing](#), an appeal or request shall be sent to the national authority where the finishing line is located, unless the sailing instructions identify another national authority.

70.5 Appeals and requests shall conform to [Appendix R](#).

71 NATIONAL AUTHORITY DECISIONS

71.1 A person who has a [conflict of interest](#) or was a member of the protest committee shall not take any part in the discussion or decision on an appeal or a request for confirmation or correction.

71.2 The national authority shall accept the facts found by the protest committee unless rule [R5](#) applies.

71.3 The national authority may:

- (a) uphold, change or reverse the protest committee's decision (including a decision on validity or a decision under rule [69](#)),
- (b) order that the hearing be reopened, or
- (c) order that a new hearing be held by the same protest committee or by a new protest committee (which may be appointed by the national authority).

71.4 If the national authority orders a hearing to be reopened, it may limit the scope of the reopened hearing to such issues as it considers appropriate.

71.5 If the national authority decides that a boat that was a party to a protest hearing broke a rule and is not exonerated, it shall penalize her, whether or not that boat or that rule was mentioned in the protest committee's decision.

71.6 The decision of the national authority is final. The national authority shall send its decision in writing to all *parties* to the hearing and the protest committee, who shall be bound by the decision.

72 INTERPRETATIONS

A club or other organization affiliated to a national authority may request an interpretation of the rules from the national authority, provided that no protest committee decision that may be appealed is involved. An interpretation shall not be used to change a previous protest committee decision.

PART 6

ENTRY AND QUALIFICATION

75 ENTERING AN EVENT

To enter an event, a boat shall comply with the requirements of the organizing authority of the event. She shall be entered by

- (a) a member of a club or other organization affiliated to a World Sailing member national authority,
- (b) such a club or organization, or
- (c) a member of a World Sailing member national authority.

76 EXCLUSION OF BOATS OR COMPETITORS

76.1 The organizing authority or the race committee may reject or cancel the entry of a boat or exclude a competitor, provided

- (a) it does so before the start of the first race after receipt of the entry for the boat or the competitor, and
- (b) it states a proper reason for doing so.

The reason shall be provided promptly in writing if requested by the boat or competitor.

76.2 However, the organizing authority or the race committee shall not reject or cancel the entry of a boat or exclude a competitor

- (a) because of advertising if the boat or competitor complies with the World Sailing Advertising Code, or
- (b) at world and continental championships if the entry is within stated quotas and the approval of the relevant World Sailing Class Association (or the Offshore Racing Congress) or World Sailing has not been obtained.

76.3 Redress may be requested by a boat or competitor that considers that the rejection or exclusion is improper or that it broke rule [76.2](#).

77 IDENTIFICATION ON SAILS

A boat shall comply with the requirements of [Appendix G](#) governing class insignia, national letters and numbers on sails.

78 COMPLIANCE WITH CLASS RULES; CERTIFICATES

78.1 While a boat is *racing*, her owner and any other person in charge shall ensure that the boat is maintained to comply with her class rules and that her measurement or rating certificate, if any, remains valid. In addition, the boat shall also comply at other times specified in the class rules, the notice of race or the sailing instructions. When a *rule* provides that the penalty for a breach of a class rule may be less than disqualification, the same penalty will apply to a breach of this rule.

78.2 When a *rule* requires a valid certificate to be produced or its existence verified before a boat *races*, and this cannot be done, the boat may *race* provided that the appropriate *committee* receives a statement signed by the person in charge that a valid certificate exists. The boat shall produce the certificate or arrange for its existence to be verified by the appropriate *committee* before the start of the last day of the event, or of the first series, whichever is earlier. The penalty for breaking this rule is disqualification without a hearing from all races of the event.

79 CATEGORIZATION

If the notice of race or class rules state that some or all competitors must satisfy categorization requirements, the categorization shall be carried out as described in the World Sailing Sailor Categorization Code.

80 RESCHEDULED EVENT

When an event is rescheduled to dates different from the dates stated in the notice of race, all boats entered shall be notified. The race committee may accept new entries that meet all the entry requirements except the original deadline for entries.

PART 7

EVENT ORGANIZATION

85 CHANGES TO RULES

85.1 A change to a [rule](#) shall refer specifically to the [rule](#) and state the change. A change to a [rule](#) includes an addition to it or deletion of all or part of it.

85.2 A change to one of the following types of [rules](#) may be made only as shown below.

<i>Type of rule</i>	<i>Change only if permitted by</i>
Racing rule	Rule 86
Rule in a World Sailing code	A rule in the code
National authority prescription	Rule 88.2
Class rule	Rule 87
Rule in the notice of race	Rule 89.2(b)
Rule in the sailing instructions	Rule 90.2(c)
Rule in any other document governing the event	A rule in the document itself

86 CHANGES TO THE RACING RULES

86.1 A racing rule shall not be changed unless permitted in the rule itself or as follows:

- (a) Prescriptions of a national authority may change a racing rule, but not the Definitions; a rule in the Introduction; [Part 2](#) or [7](#); rule [1](#), [2](#), [3](#), [5](#), [6](#), [42](#), [43](#), [47](#), [50](#), [63.3](#), [69](#), [70](#), [71](#), [72](#), [75](#), [76.2\(b\)](#) or [79](#); a rule of an appendix that changes one of these rules; Appendix [H](#) or [N](#); or a rule in a World Sailing Code listed in rule 6.1.
- (b) The notice of race or sailing instructions may change a racing rule, but not rule [4](#), [76.1](#) or [76.2\(a\)](#), Appendix [R](#), or a rule listed in rule [86.1\(a\)](#).
- (c) Class rules may change only racing rules [42](#), [49](#), [51](#), [52](#), [53](#), [54](#), [55](#), and [78.2](#).

86.2 In exception to rule [86.1](#), World Sailing may in limited circumstances authorize changes to the racing rules for a specific international event. The authorization shall be stated in a letter of approval to the organizing authority and in the notice of race, and the letter shall be posted on the official notice board.

86.3 If a national authority so prescribes, the restrictions in rule [86.1](#) do not apply if rules are changed to develop or test proposed rules. The national authority may prescribe that its approval is required for such changes.

Australian Sailing prescribes that the restrictions to rule [86.1](#) do not apply if changes are made in accordance with rule [86.3](#). An organising authority wishing to develop and test a rule change shall obtain prior written approval from Australian Sailing. The organising authority shall, when requested, promptly report the results of the test to Australian Sailing.

87 CHANGES TO CLASS RULES

The notice of race may change a class rule only when the class rules permit the change, or when written permission of the class association for the change is posted on the official notice board.

88 NATIONAL PRESCRIPTIONS

88.1 Prescriptions that Apply

The prescriptions that apply to an event are the prescriptions of the national authority with which the organizing authority is associated under rule [89.1](#). However, if boats will pass through the waters of more than one national authority while *racing*, the notice of race shall identify the prescriptions that will apply and when they will apply.

88.2 Changes to Prescriptions

The notice of race or sailing instructions may change a prescription. However, a national authority may restrict changes to its prescriptions with a prescription to this rule, provided World Sailing approves its application to do so. The restricted prescriptions shall not be changed.

Australian Sailing prescribes that, except for international events of a World Sailing class, or an international event held under Appendix [C](#) and [D](#), a notice of race or sailing instruction shall not alter any Australian Sailing prescription without prior written approval from Australian Sailing.

89 ORGANIZING AUTHORITY; NOTICE OF RACE; APPOINTMENT OF RACE OFFICIALS

89.1 Organizing Authority

An event shall be organized by an organizing authority, which shall be

- (a) World Sailing;
- (b) a member national authority of World Sailing;
- (c) an affiliated club;
- (d) an affiliated organization other than a club and, if so prescribed by the national authority, with the approval of the national authority or in conjunction with an affiliated club;
- (e) an unaffiliated class association, either with the approval of the national authority or in conjunction with an affiliated club;
- (f) two or more of the above organizations;
- (g) an unaffiliated body in conjunction with an affiliated club where the body is owned and controlled by the club. The national authority of the club may prescribe that its approval is required for such an event; or
- (h) if approved by World Sailing and the national authority of the club, an unaffiliated body in conjunction with an affiliated club where the body is not owned and controlled by the club.

In rule [89.1](#), an organization is affiliated if it is affiliated to the national authority of the venue; otherwise the organization is unaffiliated. However, if boats will pass through the waters of more than one national authority while *racing*, an organization is affiliated if it is affiliated to the national authority of one of the ports of call.

89.2 Notice of Race; Appointment of Race Officials

- (a) The organizing authority shall publish a written notice of race that conforms to rule [J1](#).
- (b) The notice of race may be changed provided adequate notice is given.
- (c) The organizing authority shall appoint a race committee and, when appropriate, appoint a protest committee, a technical committee and umpires. However, the race committee, an international jury, a technical committee and umpires may be appointed by World Sailing as provided in its Regulations.

90 RACE COMMITTEE; SAILING INSTRUCTIONS; SCORING

90.1 Race Committee

The race committee shall conduct races as directed by the organizing authority and as required by the [rules](#).

90.2 Sailing Instructions

- (a) The race committee shall publish written sailing instructions that conform to rule [J2](#).
- (b) When appropriate, for an event where entries from other countries are expected, the sailing instructions shall include, in English, the applicable national prescriptions.
- (c) The sailing instructions may be changed provided the change is in writing and posted on the official notice board before the time stated in the sailing instructions or, on the water, communicated to each boat before her warning signal. Oral changes may be given only on the water, and only if the procedure is stated in the sailing instructions.

90.3 Scoring

- (a) The race committee shall score a race or series as provided in [Appendix A](#) unless the notice of race or sailing instructions specify some other system. A race shall be scored if it is not [abandoned](#) and if one boat *sails the course* within the race time limit, if any, even if she retires after [finishing](#) or is disqualified.

- (b) When a scoring system provides for excluding one or more race scores, any score that is a Disqualification Not Excludable (DNE) shall be included in a boat's series score.
- (c) When the race committee determines from its own records or observations that it has scored a boat incorrectly, it shall correct the error and make the corrected scores available to competitors.
- (d) The race committee shall implement scoring changes directed by the protest committee or national authority as a result of decisions made in accordance with the [rules](#).
- (e) When so stated in the notice of race, notwithstanding the provisions of rules [90.3\(a\)](#), [\(b\)](#), [\(c\)](#) and [\(d\)](#), there shall be no changes to race or series scores resulting from action, including the correction of errors, initiated more than 24 hours after the later of
 - (1) the protest time limit for the last race of the event;
 - (2) being informed of a protest committee decision after the last race of the event; or
 - (3) the event results are published.

However, in exception, changes to scores shall be made resulting from a decision under rule [6](#), [69](#) or [71](#). The notice of race may change '24 hours' to a different time.

91 PROTEST COMMITTEE

A protest committee shall be

- (a) a committee appointed by the organizing authority or race committee (A national authority may prescribe a minimum number of committee members for specified events within its jurisdiction.);
- (b) an international jury appointed by the organizing authority or as prescribed in the World Sailing Regulations (It shall be composed as required by rule [N1](#) and have the authority and responsibilities stated in rule [N2](#). A national authority may prescribe that its approval is required for the appointment of international juries for events within its jurisdiction, except World Sailing events or when

international juries are appointed by World Sailing under rule [89.2\(c\)](#); or

Australian Sailing prescribes that its [approval is required](#) for the appointment of international juries for races within its jurisdiction. Race officers in charge of course areas at events requiring approval of an international jury shall be as a minimum accredited National Race Officers.

- (c) a committee appointed by the national authority under rule [71.3\(c\)](#).

92 TECHNICAL COMMITTEE

92.1 A technical committee shall be a committee of at least one member and be appointed by the organizing authority or the race committee or as prescribed in the World Sailing Regulations.

92.2 The technical committee shall conduct equipment inspection and event measurement as directed by the organizing authority and as required by the [rules](#).

APPENDIX A

SCORING

See rule [90.3](#).

A1 NUMBER OF RACES

The number of races scheduled and the number required to be scored to constitute a series shall be stated in the notice of race or sailing instructions; see rule [90.3\(a\)](#).

A2 SERIES SCORES

A2.1 Each boat's series score shall, subject to rule [90.3\(b\)](#), be the total of her race scores excluding her worst score. However, the notice of race or sailing instructions may make a different arrangement by providing, for example, that no score will be excluded, that two or more scores will be excluded, or that a specified number of scores will be excluded if a specified number of races are scored; see rule [90.3\(a\)](#). If a boat has two or more equal worst scores, the score(s) for the race(s) sailed earliest in the series shall be excluded. The boat with the lowest series score wins and others shall be ranked accordingly.

A2.2 If a boat has entered any race in a series, she shall be scored for the whole series.

A3 STARTING TIMES AND FINISHING PLACES

The time of a boat's starting signal shall be her starting time, and the order in which boats *finish* a race shall determine their finishing places. However, when a handicap or rating system is used a boat's corrected time shall determine her finishing place.

A4 SCORING SYSTEM

This Low Point System will apply unless the notice of race or sailing instructions specify another system; see rule [90.3\(a\)](#).

Each boat [finishing](#) and not thereafter retiring, being penalized or given redress shall be scored points as follows:

<i>Finishing place</i>	<i>Points</i>
First	1
Second	2
Third	3
Fourth	4
Fifth	5
Sixth	6
Seventh	7
Each place thereafter	Add 1 point

A5 SCORES DETERMINED BY THE RACE COMMITTEE

A5.1 When a race committee determines that a boat:

- (a) did not [sail the course](#),
- (b) did not comply with rule [30.2](#), [30.3](#), [30.4](#) or [78.2](#), or
- (c) retired or took a penalty under rule [44.3\(a\)](#),

it shall score the boat accordingly without a hearing. Only the protest committee may take other scoring actions that worsen a boat's score.

A5.2 A boat that did not [sail the course](#), retired or was disqualified shall be scored points for the finishing place one more than the number of boats entered in the series. A boat that is penalized under rule [30.2](#) or that takes a penalty under rule [44.3\(a\)](#) shall be scored points as provided in rule [44.3\(c\)](#).

A5.3 If the notice of race or sailing instructions state that rule [A5.3](#) will apply, rule [A5.2](#) is changed so that a boat that came to the starting area but did not [sail the course](#), retired or was disqualified shall be scored points for the finishing place one

more than the number of boats that came to the starting area, and a boat that did not come to the starting area shall be scored points for the finishing place one more than the number of boats entered in the series.

A6 CHANGES IN PLACES AND SCORES OF OTHER BOATS

A6.1 If a boat is disqualified from a race, or retires after *finishing*, or is scored Did not *sail the course*, each boat with a worse finishing place shall be moved up one place.

A6.2 If the protest committee decides to give redress by adjusting a boat's score, the scores of other boats shall not be changed unless the protest committee decides otherwise.

A7 RACE TIES

If boats are tied at the finishing line or if a handicap or rating system is used and boats have equal corrected times, the points for the place for which the boats have tied and for the place(s) immediately below shall be added together and divided equally. Boats tied for a race prize shall share it or be given equal prizes.

A8 SERIES TIES

A8.1 If there is a series-score tie between two or more boats, each boat's race scores shall be listed in order of best to worst, and at the first point(s) where there is a difference the tie shall be broken in favour of the boat(s) with the best score(s). No excluded scores shall be used.

A8.2 If a tie remains between two or more boats, they shall be ranked in order of their scores in the last race. Any remaining ties shall be broken by using the tied boats' scores in the next-to-last race and so on until all ties are broken. These scores shall be used even if some of them are excluded scores.

A9 GUIDANCE ON REDRESS

If the protest committee decides to give redress by adjusting a boat's score for a race, it is advised to consider scoring her

- (a) points equal to the average, to the nearest tenth of a point (0.05 to be rounded upward), of her points in all the races in the series except the race in question;

- (b) points equal to the average, to the nearest tenth of a point (0.05 to be rounded upward), of her points in all the races before the race in question; or
- (c) points based on the position of the boat in the race at the time of the incident that justified redress.

A10 SCORING ABBREVIATIONS

These scoring abbreviations shall be used for recording the circumstances described:

- DNC Did not [start](#); did not come to the starting area
- DNS Did not [start](#) (other than DNC and OCS)
- OCS Did not [start](#); on the course side of the starting line at her starting signal and failed to [start](#), or broke rule [30.1](#)
- ZFP 20% penalty under rule [30.2](#)
- UFD Disqualification under rule [30.3](#)
- BFD Disqualification under rule [30.4](#)
- SCP Scoring Penalty imposed
- NSC Did not [sail the course](#) (other than DNC, DNS, OCS and DNF)
- DNF Did not [finish](#)
- RET Retired
- DSQ Disqualification
- DNE Disqualification that is not excludable
- RDG Redress given
- DPI Discretionary penalty imposed

APPENDIX B

WINDSURFING FLEET RACING RULES

*Windsurfing fleet races (including marathon races) shall be sailed under The Racing Rules of Sailing as changed by this appendix. The term 'boat' elsewhere in the **rules** means 'board' or 'boat' as appropriate. A marathon race is a race intended to last more than one hour.*

Note: Links to windsurfing rules for some other formats or competitions can be found on the World Sailing website.

CHANGES TO THE DEFINITIONS

The definitions [Mark-Room](#), and [Tack](#), *Starboard* or *Port* are changed to:

Mark-Room *Mark-Room* for a board is [room](#) to sail her [proper course](#) to round or pass the *mark*.

Tack, Starboard or Port A board is on the *tack, starboard or port*, corresponding to the competitor's hand that would be nearer the mast if the competitor were in normal sailing position with both hands on the wishbone and arms not crossed. A board is on *starboard tack* when the competitor's right hand would be nearer the mast and is on *port tack* when the competitor's left hand would be nearer the mast.

The definition [Zone](#) is deleted.

Add the following definitions:

Capsize A board is *capsized* when she is not under control because her sail or the competitor is in the water.

Rounding or Passing A board is *rounding or passing a mark* from the time her [proper course](#) is to begin to manoeuvre to round or pass it, until the *mark* has been rounded or passed.

B1 CHANGES TO THE RULES OF PART 1

[No changes.]

B2 CHANGES TO THE RULES OF PART 2

13 WHILE TACKING

Rule [13](#) is changed to:

After a board passes head to wind, she shall *keep clear* of other boards until her sail has filled. During that time rules [10](#), [11](#) and [12](#) do not apply. If two boards are subject to this rule at the same time, the one on the other's port side or the one astern shall *keep clear*.

16.1 CHANGING COURSE OR POSITION OF EQUIPMENT

Rule [16.1](#) is changed to:

When a right-of-way board changes course or the position of her equipment, she shall give the other board *room* to *keep clear*.

17 ON THE SAME TACK BEFORE A REACHING START

Rule [17](#) is changed to:

When, at the warning signal, the course to the first *mark* is approximately ninety degrees from the true wind, a board *overlapped* to *leeward* of another board on the same *tack* during the last 30 seconds before her starting signal shall not sail above her shortest course through the starting line to the first *mark* while they remain *overlapped* if as a result the other board would need to take action to avoid contact, unless in doing so she promptly sails astern of the other board.

18 MARK-ROOM

18.1 When Rule 18 Applies

The first sentence of rule [18.1\(a\)](#) is changed to:

Rule 18 applies between boards when they are required to leave a *mark* on the same side and at least one of them is *rounding* or *passing* it.

18.2 Giving Mark-Room

Rule [18.2\(a\)](#) is changed to:

- (a) When the first of two boards is *rounding or passing* the *mark*,
 - (1) if the boards are [overlapped](#), the outside board shall give the inside board *mark-room*;
 - (2) if the boards are not [overlapped](#), the board [clear astern](#) at that moment shall give the other board *mark-room*.

When a board is required to give *mark-room* by rule 18.2(a), she shall continue to do so for as long as this rule applies, even if later an [overlap](#) is broken or a new [overlap](#) begins.

Rule [18.2\(b\)](#) is changed to:

- (b) Rule 18.2(a) no longer applies if the board entitled to *mark-room* passes head to wind.

Rule [18.3](#) is deleted.

18.4 Gybing or Bearing Away

Rule [18.4](#) is changed to:

When an inside [overlapped](#) right-of-way board must gybe or bear away at a *mark* to sail her [proper course](#), until she gybes or bears away she shall sail no farther from the *mark* than needed to sail that course. Rule 18.4 does not apply at a gate *mark*.

22 CAPSIZED; AGROUND; RESCUING

Rule [22](#) is changed to:

- 22.1** If possible, a board shall avoid a board that is *capsized* or has not regained control after *capsizing*, is aground, or is trying to help a person or vessel in danger.
- 22.2** If possible, a board that is *capsized* or aground shall not interfere with another board.

**23 INTERFERING WITH ANOTHER BOARD;
SAIL OUT OF WATER**

Add new rule 23.3:

23.3 In the last minute before her starting signal, a board shall have her sail out of the water and in a normal position, except when accidentally *capsized*.

B3 CHANGES TO THE RULES OF PART 3

26 STARTING RACES

Rule [26](#) is changed to:

26.1 System 1 (for Upwind Starts)

Races shall be started by using the following signals. Times shall be taken from the visual signals; the absence of a sound signal shall be disregarded.

<i>Minutes before starting signal</i>	<i>Visual signal</i>	<i>Sound signal</i>	<i>Means</i>
5*	Class flag	One	Warning signal
4	P, I, U, or black flag	One	Preparatory signal
1	Preparatory flag removed	One long	One minute
0	Class flag removed	One	Starting signal

*or as stated in the notice of race or sailing instructions

The warning signal for each succeeding class shall be made with or after the starting signal of the preceding class.

26.2 System 2 (for Reaching Starts)

Races shall be started by using the following signals. Times shall be taken from the visual signals; the absence of a sound signal shall be disregarded.

<i>Minutes before</i>	<i>Visual signal</i>	<i>Sound signal</i>	<i>Means</i>
-----------------------	----------------------	---------------------	--------------

<i>starting signal</i>			
3	Class flag		Attention signal
2	Red flag; attention signal removed	One	Warning signal
1	Yellow flag; red flag removed	One	Preparatory signal
½	Yellow flag removed		30 seconds
0	Green flag	One	Starting signal

26.3 System 3 (for Beach Starts)

- (a) When the starting line is on the beach, or so close to the beach that the competitor must stand in the water to [start](#), the start is a beach start.
- (b) The starting stations shall be numbered so that station 1 is the most windward one. Unless the sailing instructions specify some other system, a board's starting station shall be determined
 - (1) by ranking (the highest ranking board on station 1, the next highest on station 2, and so on), or
 - (2) by draw.
- (c) After boards have been called to take their positions, the race committee shall make the preparatory signal by displaying a red flag with one sound. The starting signal shall be made, at any time after the preparatory signal, by removing the red flag with one sound.
- (d) After the starting signal each board shall take the shortest route from her starting station to the water and then to her sailing position without interfering with other boards. [Part 2](#) rules will apply when both of the competitor's feet are on the board.

30 STARTING PENALTIES

Rule [30.2](#) is deleted.

31 TOUCHING A MARK

Rule [31](#) is changed to:

A board may touch a *mark* but shall not hold on to it.

B4 CHANGES TO THE RULES OF PART 4

42 PROPULSION

Rule [42](#) is changed to:

A board shall be propelled only by the action of the wind on the sail and by the action of the water on the hull or its appendages. However, pumping and fanning the sail is permitted. The board shall not be propelled by paddling, swimming or walking.

44 PENALTIES AT THE TIME OF AN INCIDENT

Rule [44](#) is changed to:

44.1 Taking a Penalty

A board may take a 360°-Turn Penalty when she may have broken one or more rules of [Part 2](#) in an incident while *racing*. Alternatively, the notice of race or sailing instructions may specify the use of some other penalty, in which case the specified penalty shall replace the 360°-Turn Penalty. However, if the board caused injury or serious damage or, despite taking a penalty, gained a significant advantage in the race or series by her breach, her penalty shall be to retire.

44.2 360°-Turn Penalty

After getting well clear of other boards as soon after the incident as possible, a board takes a 360°-Turn Penalty by promptly making a 360° turn with no requirement for a tack or a gybe. When a board takes the penalty at or near the finishing line, her hull shall be completely on the course side of the line before she *finishes*.

50 COMPETITOR CLOTHING AND EQUIPMENT

Rule [50.1\(a\)](#) is changed to:

- (a) Competitors shall not wear or carry clothing or equipment for the purpose of increasing their weight. However, a competitor may wear a drinking container that shall have a capacity of no more than 1.5 litres.

PART 4 RULES DELETED

Rules [45](#), [48.2](#), [49](#), [50.1\(c\)](#), [50.2](#), [51](#), [52](#), [54](#), [55](#) and [56.1](#) are deleted.

B5 CHANGES TO THE RULES OF PART 5

60 PROTESTS

60.2 Intention to Protest

Rule [60.2\(a\)\(1\)](#) is changed to:

- (a) If a *protest* concerns an incident observed by the protestor in the racing area:
 - (1) If the protestor is a board, she shall hail 'Protest' at the first reasonable opportunity. She shall also inform the race committee of her intention to protest as soon as practicable after she *finishes* or retires.

60.3 Delivering a Protest

Add to rule [60.3\(a\)](#):

This rule does not apply to a race in an elimination series that will qualify a board to compete in a later stage of an event.

60.4 Protest Validity

In rule [60.4\(a\)\(2\)](#), delete 'or did not see'.

61 REDRESS

61.4 Redress Decisions

In rule [61.4\(b\)\(2\)](#) and [61.4\(b\)\(3\)](#), change 'injury or physical damage' to 'injury, physical damage or *capsize*'.

63 CONDUCT OF HEARINGS

63.4 Hearing Procedure

Add to rule [63.4](#):

However, for an elimination series race that will qualify a board to compete in a later stage of an event, [protests](#) and requests for redress need not be in writing; they shall be made orally to a member of the protest committee as soon as reasonably possible following the race. The protest committee may take evidence in any way it considers appropriate and may communicate its decision orally.

63.5 Decisions

Rule [63.5](#)(d) is changed to:

- (d) If the protest committee is in doubt about a matter concerning the measurement of a board, the meaning of a class rule, or damage to a board, it shall refer its questions, together with the relevant facts, to an authority responsible for interpreting the rule. In making its decision, the committee is bound by the authority's reply.

63.6 Informing the Parties and Others

Add to rule [63.6](#)(b):

This rule does not apply to a race in an elimination series that will qualify a board to compete in a later stage of an event.

70 APPEALS AND REQUESTS TO A NATIONAL AUTHORITY

Rule [70.3](#)(b) is changed to:

- (b) that are essential to promptly determine the result of a race that will qualify a board to compete in a subsequent event (a national authority may prescribe that its permission is required for such a procedure);

Add new rule 70.3(e):

- (e) made in an elimination series that will qualify a board to compete in a later stage of an event.

B6 CHANGES TO THE RULES OF PART 6

78 COMPLIANCE WITH CLASS RULES; CERTIFICATES

Add to rule [78.1](#): 'When so prescribed by World Sailing, a numbered and dated device on a board and her centreboard, fin and rig shall serve as her measurement certificate.'

B7 CHANGES TO THE RULES OF PART 7

90 RACE COMMITTEE; SAILING INSTRUCTIONS; SCORING

The last sentence of rule [90.2\(c\)](#) is changed to: 'Oral instructions may be given only if the procedure is stated in the sailing instructions.'

B8 CHANGES TO APPENDIX A

A1 NUMBER OF RACES; OVERALL SCORES

Rule [A1](#) is changed to:

The number of races scheduled and the number required to be scored to constitute a series shall be stated in the notice of race or sailing instructions; see rule 90.3(a). If an event includes more than one discipline or format, the notice of race or sailing instructions shall state how the overall scores are to be calculated.

A2 SERIES SCORES

Rule [A2.1](#) is changed to:

Each board's series score shall, subject to rule [90.3\(b\)](#), be the total of her race scores excluding her

- (a) worst score when from 5 to 11 races have been scored, or
- (b) two worst scores when 12 or more races have been scored (see rule [90.3\(a\)](#)).

However, the notice of race or sailing instructions may make a different arrangement. If a board has two or more equal worst scores, the score(s) for the race(s) sailed earliest in the series shall be excluded. The board with the

lowest series score wins and others shall be ranked accordingly.

A5 SCORES DETERMINED BY THE RACE COMMITTEE

Add new rule A5.4:

A5.4 For an elimination series race that will qualify a board to compete in a later stage of an event, a board that did not sail the course, retired or was disqualified shall be scored points equal to the number of boards permitted to sail in that race.

A8 SERIES TIES

Rule [A8](#) is changed to:

A8.1 If there is a series-score tie between two or more boards, each board's excluded race scores shall be listed in order of best to worst, and at the first point(s) where there is a difference the tie shall be broken in favour of the board(s) with the best excluded race score(s).

A8.2 If a tie remains between two or more boards, each board's race scores, including excluded scores, shall be listed in order of best to worst, and at the first point(s) where there is a difference the tie shall be broken in favour of the board(s) with the best score(s). These scores shall be used even if some of them are excluded scores.

A8.3 If a tie still remains between two or more boards, they shall be ranked in order of their scores in the last race. Any remaining ties shall be broken by using the tied boards' scores in the next-to-last race and so on until all ties are broken. These scores shall be used even if some of them are excluded scores.

B9 CHANGES TO APPENDIX G

G1 WORLD SAILING CLASS BOARDS

G1.3 Positioning

Rule G1.3 is changed to:

The class insignia shall be displayed once on each side of the sail in the area above a line projected at right angles

from a point on the luff of the sail one-third of the distance from the head to the wishbone. The national letters and sail numbers shall be in the central third of that part of the sail above the wishbone, clearly separated from any advertising. They shall be black and applied back to back on an opaque white background. The background shall extend a minimum of 30 mm beyond the characters. There shall be a '–' between the national letters and the sail number, and the spacing between characters shall be adequate for legibility.

APPENDIX C

MATCH RACING RULES

Match races shall be sailed under The Racing Rules of Sailing as changed by this appendix. Matches shall be umpired unless the notice of race or sailing instructions state otherwise.

Note: A Standard Notice of Race, Standard Sailing Instructions, and Match Racing Rules for Visually Impaired Competitors are available on the World Sailing website.

C1 TERMINOLOGY

‘Competitor’ means the skipper, team or boat as appropriate for the event. ‘Flight’ means two or more matches started in the same starting sequence.

C2 CHANGES TO THE DEFINITIONS AND THE RULES OF PARTS 1, 2, 3 AND 4

C2.1 The definition [*Finish*](#) is changed to:

Finish A boat *finishes* when, after her starting signal, any part of her hull crosses the finishing line from the course side after completing any penalties. However, when penalties are cancelled under rule C7.2(d) after one or both boats have *finished* each shall be recorded as *finished* when she crossed the line. A boat has not *finished* if she continues to [*sail the course*](#).

C2.2 The definition *Mark-Room* is changed to:

Mark-Room Room for a boat to sail her [*proper course*](#) to round or pass the [*mark*](#), and *room* to pass a finishing [*mark*](#) after *finishing*.

C2.3 Add to the definition [*Proper Course*](#): ‘A boat taking a penalty or manoeuvring to take a penalty is not sailing a [*proper course*](#).’

C2.4 In the definition [*Zone*](#) the distance is changed to two hull lengths.

C2.5 Add new rule 7 to Part 1:

7 LAST POINT OF CERTAINTY

The umpires will assume that the state of a boat, or her relationship to another boat, has not changed, until they are certain that it has changed.

C2.6 Rule [13](#) is changed to:

13 WHILE TACKING OR GYBING

13.1 After a boat passes head to wind, she shall [keep clear](#) of other boats until she is on a close-hauled course.

13.2 After the foot of the mainsail of a boat sailing downwind crosses the centreline she shall [keep clear](#) of other boats until her mainsail has filled or she is no longer sailing downwind.

13.3 While rule 13.1 or 13.2 applies, rules [10](#), [11](#) and [12](#) do not. However, if two boats are subject to rule 13.1 or 13.2 at the same time, the one on the other's port side or the one astern shall [keep clear](#).

C2.7 Rule [16.2](#) is changed to:

16.2 In addition, when boats on opposite [tacks](#) are sailing to a [mark](#) that is to windward of them, the [starboard-tack](#) boat shall not bear away to a course that is more than ninety degrees from the true wind and that is below her [proper course](#), if as a result the [port-tack](#) boat must change course immediately to continue *keeping clear*.

C2.8 Rule [17](#) is deleted.

C2.9 Rule [18](#) is changed to:

18 MARK-ROOM

18.1 When Rule 18 Applies

Rule 18 applies between boats when they are required to leave a [mark](#) on the same side and at least one of them is in the [zone](#). However, it does not apply between a boat approaching a [mark](#) and one leaving it. Rule 18 no longer applies between boats when the boat entitled to [mark-room](#) is on the next leg and the [mark](#) is astern of her.

18.2 Giving Mark-Room

- (a) When the first boat reaches the zone,
 - (1) if boats are overlapped, the outside boat at that moment shall thereafter give the inside boat mark-room.
 - (2) if boats are not overlapped, the boat that has not reached the zone shall thereafter give mark-room.
- (b) If the boat entitled to mark-room leaves the zone, the entitlement to mark-room ceases and rule 18.2(a) is applied again if required based on the relationship of the boats at the time rule 18.2(a) is re-applied.
- (c) If a boat obtained an inside overlap and, from the time the overlap began, the outside boat is unable to give mark-room, rule 18.2(a) does not apply between them.

18.3 Tacking or Gybing

- (a) If mark-room for a boat includes a change of tack, such tack or gybe shall be done no faster than a tack or gybe to sail her proper course.
- (b) When an inside overlapped right-of-way boat must change tack at a mark to sail her proper course, until she changes tack she shall sail no farther from the mark than needed to sail that course. Rule 18.3(b) does not apply at a gate mark or a finishing mark and a boat shall be exonerated for breaking this rule if the course of another boat was not affected before the boat changed tack.

C2.10 Rule 20.4(a) is changed to:

- (a) The following arm signals by the helmsperson are required in addition to the hails:
 - (1) for 'Room to tack', repeatedly and clearly pointing to windward; and
 - (2) for 'You tack', repeatedly and clearly pointing at the other boat and waving the arm to windward.

C2.11 Rule 21.3 is deleted.

C2.12 Rule [23.1](#) is changed to:

23.1 If reasonably possible, a boat not [racing](#) shall not interfere with a boat that is [racing](#) or an umpire boat.

C2.13 Add new rule 23.3:

23.3 When boats in different matches meet, any change of course by either boat shall be consistent with complying with a [rule](#) or trying to win her own match.

C2.14 Rule [27.2](#) is changed to:

27.2 No later than the warning signal, the race committee may move a starting [mark](#).

C2.15 Rule [31](#) is changed to:

31 TOUCHING A MARK

While [racing](#), neither the crew nor any part of a boat's hull shall touch a starting [mark](#) before [starting](#), a [mark](#) that begins, bounds or ends the leg of the course on which she is sailing, or a finishing [mark](#) after [finishing](#). In addition, while [racing](#), a boat shall not touch a race committee vessel that is also a [mark](#).

C2.16 Add new rule 41(e):

(e) help to recover from the water and return on board a crew member, provided the return on board is at the approximate location of the recovery.

C2.17 Rule [42](#) shall also apply between the warning and preparatory signals.

C2.18 Rule [42.2](#)(d) is changed to:

(d) sculling: repeated movement of the helm to propel the boat forward;

C3 RACE SIGNALS AND CHANGES TO RELATED RULES

C3.1 Starting Signals

The signals for starting a match shall be as follows. Times shall be taken from the visual signals; the failure of a sound signal shall be disregarded. If more than one match will be sailed, the

starting signal for one match shall be the warning signal for the next match.

<i>Time in minutes</i>	<i>Visual signal</i>	<i>Sound signal</i>	<i>Means</i>
7	Flag F displayed	One	Attention signal
6	Flag F removed	None	
5	Numeral pennant displayed*	One	Warning signal
4	Flag P displayed	One	Preparatory signal
2	Blue or yellow flag or both displayed**	One**	End of pre-start entry time
1	Flag P removed	One long	
0	Warning signal removed	One	Starting signal

* Within a flight, numeral pennant 1 means Match 1, pennant 2 means Match 2, etc., unless the sailing instructions state otherwise.

** These signals shall be made only if one or both boats fail to comply with rule C4.2. The flag(s) shall be displayed until the umpires have signalled a penalty or for one minute, whichever is earlier.

C3.2 Changes to Related Rules

(a) Rule [29.1](#) is changed to:

- (1) When at a boat's starting signal any part of her hull is on the course side of the starting line or one of its extensions, the race committee shall promptly display a blue or yellow flag identifying the boat with one sound. The flag shall be displayed until the hull of the boat is completely on the pre-start side of the starting line or one of its extensions or until two minutes after her starting signal, whichever is earlier.
- (2) When after a boat's starting signal any part of her hull crosses from the pre-start side to the course side of the starting line across an extension without having [started](#) correctly, the race committee shall promptly

display a blue or yellow flag identifying the boat. The flag shall be displayed until the hull of the boat is completely on the pre-start side of the starting line or one of its extensions or until two minutes after her starting signal, whichever is earlier.

- (b) In the race signal AP the last sentence is changed to: 'The attention signal will be made 1 minute after removal unless at that time the race is postponed again or abandoned.'
- (c) In the race signal N the last sentence is changed to: 'The attention signal will be made 1 minute after removal unless at that time the race is abandoned again or postponed.'

C3.3 Finishing Line Signals

The race signal Blue flag or shape shall not be used.

C4 REQUIREMENTS BEFORE THE START

C4.1 At a boat's preparatory signal, her hull shall be completely outside the line that is at a 90° angle to the starting line through the starting mark at her assigned end. In the pairing list, the boat listed on the left-hand side is assigned the port end and shall display a blue flag at her stern while racing. The other boat is assigned the starboard end and shall display a yellow flag at her stern while racing.

C4.2 Within the two-minute period following a boat's preparatory signal, her hull shall cross and clear the starting line, the first time from the course side to the pre-start side.

C5 SIGNALS BY UMPIRES

C5.1 A green and white flag with one long sound means 'No penalty.'

C5.2 A blue or yellow flag identifying a boat with one long sound means 'The identified boat shall take a penalty by complying with rule C7.'

C5.3 A red flag with or soon after a blue or yellow flag with one long sound means 'The identified boat shall take a penalty by complying with rule C7.3(d).'

C5.4 A black flag with a blue or yellow flag and one long sound means 'The identified boat is disqualified or has retired, and the match is terminated and awarded to the other boat.'

C5.5 One short sound means 'A penalty is now completed.'

C5.6 Repetitive short sounds mean 'A boat is no longer taking a penalty and the penalty remains.'

C5.7 A blue or yellow flag or shape displayed from an umpire boat means 'The identified boat has an outstanding penalty.'

C6 PROTESTS AND REQUESTS FOR REDRESS BY BOATS

C6.1 A boat may protest another boat

- (a) under a rule of [Part 2](#), except rule [14](#), by clearly displaying flag Y immediately after an incident in which she was involved;
- (b) under any rule not protestable in rule C6.1(a) or C6.2 by clearly displaying a red flag as soon as possible after the incident.

C6.2 A boat may not protest another boat under

- (a) rule [14](#), unless damage or injury results;
- (b) a rule of [Part 2](#), unless she was involved in the incident;
- (c) rule [31](#) or [42](#); or
- (d) rule C4 or C7.

C6.3 A boat requesting redress because of circumstances that arise while she is *racing* or in the finishing area shall clearly display a red flag as soon as possible after she becomes aware of those circumstances, but no later than two minutes after *finishing* or retiring.

- C6.4**
- (a) A boat protesting under rule C6.1(a) shall remove flag Y before or as soon as possible after the umpires' signal.
 - (b) A boat protesting under rule C6.1(b) or requesting redress under rule C6.3 shall, for her *protest* or request to be valid, keep her red flag displayed until she has so informed the umpires after *finishing* or retiring. No written *protest* or request for redress is required.

C6.5 Umpire Decisions

- (a) After flag Y is displayed, the umpires shall decide whether to penalize any boat. They shall signal their decision in compliance with rule C5.1, C5.2 or C5.3. However,
 - (1) if the umpires decide to penalize a boat, and as a result that boat will have more than two outstanding penalties, the umpires shall signal her disqualification under rule C5.4;
 - (2) when the umpires penalize a boat under rule C8.2 and in the same incident there is a flag Y from a boat, the umpires may disregard the flag Y.
- (b) The red-flag penalty in rule C5.3 shall be used when a boat has gained a controlling position as a result of breaking a [rule](#), but the umpires are not certain that the conditions for an additional umpire-initiated penalty have been fulfilled.

C6.6 Protest Committee Decisions

- (a) The protest committee may take evidence in any way it considers appropriate and may communicate its decision orally.
- (b) If the protest committee decides that a breach of a [rule](#) has had no significant effect on the outcome of the match, it may
 - (1) impose a penalty of one point or part of one point;
 - (2) order a resail; or
 - (3) make another arrangement it decides is equitable, which may be to impose no penalty.
- (c) The penalty for breaking rule [14](#) when damage or injury results will be at the discretion of the protest committee, and may include exclusion from further races in the event.

C6.7 Add new rule N1.10 to Appendix N:

N1.10 In rule N1.1, one International Umpire may be appointed to the jury, or a panel of it, in place of one International Judge.

C7 PENALTY SYSTEM

C7.1 Deleted Rule

Rule [44](#) is deleted.

C7.2 All Penalties

- (a) A penalized boat may delay taking a penalty within the limitations of rule C7.3 and shall take it as follows:
 - (1) When on a leg of the course to a windward [mark](#), she shall gybe and, as soon as reasonably possible, luff to a close-hauled course.
 - (2) When on a leg of the course to a leeward [mark](#) or the finishing line, she shall tack and, as soon as reasonably possible, bear away to a course that is more than ninety degrees from the true wind.
- (b) Add to rule 2: 'When [racing](#), a boat need not take a penalty unless signalled to do so by an umpire.'
- (c) A boat completes a leg of the course when any part of her hull crosses the extension of the line from the previous [mark](#) through the [mark](#) she is rounding, or on the last leg when she *finishes*.
- (d) A penalized boat shall not be recorded as having *finished* until she takes her penalty and her hull is completely on the course side of the line and she then *finishes*, unless the penalty is cancelled before or after she crosses the finishing line.
- (e) If a boat has one or two outstanding penalties and the other boat in her match is penalized, one penalty for each boat shall be cancelled except that a red-flag penalty shall not cancel or be cancelled by another penalty.
- (f) If one boat has *finished* and is no longer [racing](#), and the other boat has an outstanding penalty, the umpires may cancel the outstanding penalty.

C7.3 Penalty Limitations

- (a) A boat taking a penalty that includes a tack shall have the spinnaker head below the main-boom gooseneck from the time she passes head to wind until she is on a close-hauled course.

- (b) No part of a penalty may be taken inside the [zone](#) of a rounding [mark](#) that begins, bounds or ends the leg the boat is on.
- (c) If a boat has one outstanding penalty, she may take the penalty any time after [starting](#) and before *finishing*. If a boat has two outstanding penalties, she shall take one of them as soon as reasonably possible, but not before [starting](#).
- (d) When the umpires display a red flag with or soon after a penalty flag, the penalized boat shall take a penalty as soon as reasonably possible, but not before [starting](#).

C7.4 Taking and Completing Penalties

- (a) When a boat with an outstanding penalty is on a leg to a windward [mark](#) and gybes, or is on a leg to a leeward [mark](#) or the finishing line and passes head to wind, she is taking a penalty.
- (b) When a boat taking a penalty either does not take the penalty correctly or does not complete the penalty as soon as reasonably possible, she is no longer taking a penalty. The umpires shall signal this as required by rule C5.6.
- (c) The umpire boat for each match shall display blue or yellow flags or shapes, each flag or shape indicating one outstanding penalty. When a boat has taken a penalty, or a penalty has been cancelled, one flag or shape shall be removed, with the appropriate sound signal. Failure of the umpires to signal correctly shall not change the number of penalties outstanding.

C8 PENALTIES INITIATED BY UMPIRES

C8.1 Rule Changes

Rule [60.1](#) does not apply to protests by the race committee or technical committee under [rules](#) for which penalties may be imposed by umpires.

- C8.2** When the umpires decide that a boat has broken rule [31](#), [42](#), C4, C7.3(c) or C7.3(d) she shall be penalized by signalling her under rule C5.2 or C5.3. However, if a boat is penalized for breaking a rule of [Part 2](#) and if she in the same incident breaks

rule [31](#), she shall not be penalized for breaking rule [31](#). Furthermore, a boat that displays an incorrect flag or does not display the correct flag shall be warned orally and given an opportunity to correct the error before being penalized.

- C8.3** When the umpires decide that a boat has
- (a) gained an advantage by breaking a [rule](#) after allowing for a penalty,
 - (b) deliberately broken a [rule](#), or
 - (c) committed a breach of sportsmanship,
- she shall be penalized under rule C5.2, C5.3 or C5.4.
- C8.4** If the umpires or protest committee members decide that a boat may have broken a [rule](#) other than those listed in rules C6.1(a) and C6.2, they shall so inform the protest committee for its action under rule [60.1](#) and rule C6.6 when appropriate.
- C8.5** When, after one boat has [started](#), the umpires are satisfied that the other boat will not [start](#), they may signal under rule C5.4, identifying the boat that has not [started](#).
- C8.6** When one boat retires after both boats in a match have [started](#), the umpires may signal under rule C5.4, identifying the retired boat.
- C8.7** When the match umpires, together with at least one other umpire, decide that a boat has broken rule [14](#) and damage resulted, they may impose a points-penalty without a hearing. The competitor shall be informed of the penalty as soon as practicable and, at the time of being so informed, may request a hearing. The protest committee shall then proceed under rule C6.6. Any penalty decided by the protest committee may be more than the penalty imposed by the umpires. When the umpires decide that a penalty greater than one point is appropriate, they shall act under rule C8.4.

C9 REQUESTS FOR REDRESS OR REOPENING; APPEALS; OTHER PROCEEDINGS

C9.1 There shall be no request for redress or an appeal from a decision made under rule C5, C6, C7 or C8. Rule [63.7\(b\)](#) is changed to: 'A party to the hearing may not ask for a reopening.'

C9.2 A competitor may not base a request for redress on a claim that an action by an official boat was improper. The protest committee may decide to consider giving redress in such circumstances but only if it believes that an official boat, including an umpire boat, may have seriously interfered with a competing boat.

C9.3 No proceedings of any kind may be taken in relation to any action or non-action by the umpires, except as permitted in rule C9.2.

C10 SCORING

C10.1 The winning competitor of each match scores one point (half a point each for a dead heat); the loser scores no points.

C10.2 When a competitor withdraws from part of an event the scores of all completed races shall stand.

C10.3 When a single round robin is terminated before completion, or a multiple round robin is terminated during the first round robin, a competitor's score shall be the average points scored per match sailed by the competitor. However, if any of the competitors have completed less than one-third of the scheduled matches, the entire round robin shall be disregarded and, if necessary, the event declared void. For the purposes of tie-breaking in rule C11.1(a), a competitor's score shall be the average points scored per match between the tied competitors.

C10.4 When a multiple round robin is terminated with an incomplete round robin, only one point shall be available for all the matches sailed between any two competitors, as follows:

<i>Number of matches completed between any two competitors</i>	<i>Points for each win</i>
1	One point
2	Half a point
3	A third of a point
(etc.)	

C10.5 In a round-robin series,

- (a) competitors shall be placed in order of their total scores, highest score first;
- (b) a competitor who has won a match but is disqualified for breaking a [rule](#) against a competitor in another match shall lose the point for that match (but the losing competitor shall not be awarded the point); and
- (c) the overall position between competitors who have sailed in different groups shall be decided by the highest score.

C10.6 In a knockout series the sailing instructions shall state the minimum number of points required to win a series between two competitors. When a knockout series is terminated it shall be decided in favour of the competitor with the higher score.

C10.7 When only one boat in a match fails to [sail the course](#), she shall be scored no points (without a hearing).

C11 TIES**C11.1 Round-Robin Series**

In a round-robin series competitors are assigned to one or more groups and scheduled to sail against all other competitors in their group one or more times. Each separate stage identified in the event format shall be a separate round-robin series irrespective of the number of times each competitor sails against each other competitor in that stage.

Ties between two or more competitors in a round-robin series shall be broken by the following methods, in order, until all ties

are broken. When one or more ties are only partially broken, rules C11.1(a) to C11.1(e) shall be re-applied to them. Ties shall be decided in favour of the competitor(s) who

- (a) placed in order, has the highest score in the matches between the tied competitors;
- (b) when the tie is between two competitors in a multiple round robin, has won the last match between the two competitors;
- (c) has the most points against the competitor placed highest in the round-robin series or, if necessary, second highest, and so on until the tie is broken. When two separate ties have to be resolved but the resolution of each depends upon resolving the other, the following principles shall be used in the rule C11.1(c) procedure:
 - (1) the higher-place tie shall be resolved before the lower- place tie, and
 - (2) all the competitors in the lower-place tie shall be treated as a single competitor for the purposes of rule C11.1(c);
- (d) after applying rule C10.5(c), has the highest place in the different groups, irrespective of the number of competitors in each group;
- (e) has the highest place in the most recent stage of the event (fleet race, round robin, etc.).

C11.2 Knockout Series

Ties (including 0–0) between competitors in a knockout series shall be broken by the following methods, in order, until the tie is broken. The tie shall be decided in favour of the competitor who

- (a) has the highest place in the most recent round-robin series, applying rule C11.1 if necessary;
- (b) has won the most recent match in the event between the tied competitors.

C11.3 Remaining Ties

When rule C11.1 or C11.2 does not resolve a tie,

- (a) if the tie needs to be resolved for a later stage of the event (or another event for which the event is a direct qualifier), the tie shall be broken by a sail-off when practicable. When the race committee decides that a sail-off is not practicable, the tie shall be decided in favour of the competitor who has the highest score in the round-robin series after eliminating the score for the first race for each tied competitor or, should this fail to break the tie, the second race for each tied competitor and so on until the tie is broken. When a tie is partially resolved, the remaining tie shall be broken by reapplying rule C11.1 or C11.2.
- (b) to decide the winner of an event that is not a direct qualifier for another event, or the overall position between competitors eliminated in one round of a knockout series, a sail-off may be used (but not a draw).
- (c) when a tie is not broken any monetary prizes or ranking points for tied places shall be added together and divided equally among the tied competitors.

APPENDIX D

TEAM RACING RULES

Team races shall be sailed under The Racing Rules of Sailing as changed by this appendix.

D1 CHANGES TO THE RACING RULES

D1.1 Definitions and the Rules of Parts 2 and 4

- (a) In the definition Zone the distance is changed to two hull lengths.
- (b) Rule 18.2(a) is changed to:
 - (a) When the first of two boats reaches the zone,
 - (1) if the boats are overlapped, the outside boat at that moment shall give the inside boat mark-room;
 - (2) if the boats are not overlapped, the boat that has not reached the zone at that moment shall give the other boat mark-room.

If a boat passes head to wind and at that moment is clear astern of a boat in the zone, she shall give the clear-ahead boat mark-room.

When a boat is required to give mark-room by this rule, she shall continue to do so for as long as this rule applies, even if later an overlap is broken or a new overlap begins.

- (c) Rule 18.4 is deleted.
- (d) When stated in the notice of race or sailing instructions, rule 20.4 is changed so that the following arm signals are required in addition to the hails:
 - (1) for 'Room to tack', repeatedly and clearly pointing to windward; and
 - (2) for 'You tack', repeatedly and clearly pointing at the other boat and waving the arm to windward.
- (e) Rule 23.1 is changed to: 'If reasonably possible, a boat not racing shall not interfere with a boat that is racing, and a

boat that has [finished](#) shall not act to interfere with a boat that has not [finished](#).'

- (f) Add new rule 23.3: 'When boats in different races meet, any change of course by either boat shall be consistent with complying with a [rule](#) or trying to win her own race.'
- (g) Add to rule [41](#):
 - (e) help from another boat on her team provided electronic communication is not used.
- (h) Rule [45](#) is deleted.

D1.2 Protests and Requests for Redress

- (a) A boat may
 - (1) protest another boat, but her protest is invalid if it alleges a breach of a rule of [Part 2](#) and she was not involved in the incident, unless the incident involved contact between boats on the other team (This changes rule [60.4\(a\)\(2\)](#).);
 - (2) remove her red flag after it has been conspicuously displayed (This changes rule [60.2\(a\)\(1\)](#).);
 - (3) request redress, but not for damage or injury caused by another boat on her team (This changes rule [61.1\(a\)](#)).
- (b) The race committee and protest committee shall not protest a boat for breaking a rule of [Part 2](#) except
 - (1) based on evidence in a report from an umpire after a black and white flag has been displayed; or
 - (2) under rule [14](#) upon receipt of a report from any source alleging damage or injury.
- (c) [Protests](#) and requests for redress need not be in writing. The protest committee may take evidence in any way it considers appropriate and may communicate its decision orally.
- (d) When a supplied boat suffers a breakdown, rule D5 applies.

D1.3 Penalties

- (a) Rule [44.1](#) is changed to:

A boat may take a One-Turn Penalty when she may have broken one or more rules of [Part 2](#), or rule [31](#) or [42](#), in an incident while *racing*. However, she or her team may be further penalized under rule D2.3 or D3.3 if the incident caused injury or damage, or despite taking a penalty her team has gained an advantage.

- (b) When a boat clearly indicates that she will take a penalty under rule [44.1](#), she shall take that penalty.
- (c) A boat may take a penalty by retiring and informing the race committee or an umpire.
- (d) There shall be no penalty for breaking a rule of [Part 2](#) when the incident is between boats on the same team and there is no contact.

D2 UMPIRED RACES

D2.1 When Rule D2 Applies; Redress and Breakdowns

- (a) Rule D2 applies to umpired races. Races to be umpired shall be identified in the notice of race or sailing instructions or by the display of flag J no later than the warning signal.
- (b) A boat that protests under a rule listed in rule D2.2 or D2.3 for an incident while *racing* shall hail 'Protest' and display a red flag and is not entitled to a hearing. This changes rules [60.2\(a\)\(1\)](#) and [63.2\(a\)](#).
- (c) A boat requesting redress for an incident in the racing area, or requesting a breakdown score change under rule D5.2, shall conspicuously display a red flag at the first reasonable opportunity after the incident or breakdown. She shall display the red flag until it is acknowledged by the race committee or an umpire.

D2.2 Protests by Boats

When a boat protests under a rule of [Part 2](#) or rule [31](#) or [42](#):

- (a) Boats shall be given time to respond.
- (b) An umpire may penalize any boat that broke a rule, is not exonerated, and did not take the appropriate penalty.

- (c) An umpire shall signal a decision in compliance with rule D2.4.

D2.3 Umpire-Initiated Decisions

When a boat

- (a) breaks rule [31](#) or [42](#) and does not take a penalty;
- (b) breaks a rule of [Part 2](#) and makes contact with another boat on her team or with a boat in another race, and no boat takes a penalty;
- (c) breaks a [rule](#) and her team gains an advantage despite her, or another boat on her team, taking a penalty;
- (d) breaks rule [14](#) and there is damage or injury;
- (e) breaks rule D1.3(b) or D2.5; or
- (f) commits a breach of sportsmanship

an umpire may penalize her, or report the incident to the protest committee, or both. No protest is required.

D2.4 Signalling an Umpire Decision

An umpire shall signal a decision with one long sound and the display of a flag as follows:

- (a) For no penalty, a green and white flag.
- (b) To penalize one or more boats, a red flag. The umpire shall hail or signal to identify each boat penalized.
- (c) To report the incident to the protest committee, a black and white flag.

D2.5 Taking a Penalty Signalled by an Umpire

A boat penalized by an umpire shall take a Two-Turns Penalty. However, when a boat is penalized under rule D2.3 and an umpire hails or signals a number of turns, the boat shall take that number of One-Turn Penalties.

D2.6 Limitations on Other Proceedings

- (a) A boat may not protest under rule D1.3(b) or D2.5.
- (b) A decision, action or non-action of an umpire shall not be
 - (1) the basis for a request for redress or appeal by a boat, or

- (2) grounds for [abandoning](#) a race after it has started.
- (c) However, the protest committee may call a hearing to consider redress when it believes that an umpire boat may have seriously interfered with a boat [racing](#).

D3 SCORING A RACE

- D3.1**
- (a) Each boat [finishing](#) a race and not retiring thereafter shall be scored points equal to her finishing place. All other boats shall be scored points equal to the number of boats entitled to *race*.
 - (b) When a boat is OCS and does not then either return to [start](#) or promptly retire, 10 points shall be added to her score.
 - (c) When a boat [finishes](#) and has not *sailed the course*, 6 points shall be added to her score, unless rule D3.1(b) applies.
 - (d) When a boat fails to take a penalty imposed by an umpire at or near the finishing line, she shall be scored as retired.
 - (e) When a boat is scored as retired after [finishing](#), each boat with a worse finishing place shall be moved up one place.

D3.2 When all boats on one team have [finished](#), retired or failed to [start](#), the other team's boats [racing](#) at that time shall be scored the points they would have received had they [finished](#).

D3.3 When a protest committee decides that a boat that is a [party](#) to a protest hearing has broken a rule and was not exonerated:

- (a) If the boat has broken
 - (1) rule [1](#) or [2](#),
 - (2) rule [14](#) when she has caused damage or injury, or
 - (3) a [rule](#) when not [racing](#),half or more race wins may be deducted from her team, or no penalty may be imposed. Race wins deducted shall not be awarded to any other team.
- (b) If the boat has broken a [rule](#) other than the rules mentioned in D3.3(a) while [racing](#) and not taken or

received a penalty for that breach, 6 points shall be added to her score.

- (c) If the boat's team has gained an advantage despite taking or receiving a penalty, the boat's score may be increased.

D3.4 The team with the lower total points wins the race. If the totals are equal, the team that does not have first place wins.

D4 SCORING AN EVENT

D4.1 Terminology

- (a) The format of an event consists of one or more stages.
- (b) In a round-robin stage, teams are divided into one or more groups, and each group is scheduled to sail one or more round-robins.
- (c) A round-robin consists of each team in a group sailing one race against each other team in that group.
- (d) A knockout stage consists of one or more rounds in which each team sails one match. A match is one or more races between two teams.

D4.2 Event Format

- (a) The notice of race or sailing instructions shall state the format and stages of the event, and any special scoring rules.
- (b) In order to conclude an event, the race committee may change or terminate any part of the format at any reasonable time taking into account the entries, weather, time constraints and other relevant factors.

D4.3 Scoring a Round-Robin Stage

- (a) Teams in a round-robin group shall be ranked in order of number of race wins, highest first. If the teams have not completed an equal number of races, they shall be ranked in order of the percentage of races won, highest first.
- (b) However, if a round-robin is terminated when fewer than 80% of its scheduled races have been completed, its race results shall not be included, but shall be used to break

ties between teams in the group who all sailed each other in the terminated round-robin.

- (c) Results from a previous round-robin stage shall only be carried forward if stated in the notice of race or sailing instructions.

D4.4 Round-Robin Tie Breaks

Ties in a round-robin stage shall be broken using results from that stage only.

- (a) If the tied teams have all sailed each other at least once in the stage, the tie shall be broken in the order below.
 - (1) Percentage of races won in all races between the tied teams, highest first;
 - (2) Average points per race in all races between the tied teams, lowest first;
 - (3) If two teams remain tied, the winner of the last race between them;
 - (4) Average points per race in all races against common opponents, lowest first;
 - (5) A sail-off if possible, otherwise a game of chance.
- (b) Otherwise, the tie shall be broken using only steps (4) and (5) above.
- (c) When a tie is partially broken by one of the above, the remaining tie shall be broken in accordance with D4.4(a) or (b) as appropriate.

D4.5 Scoring a Knockout Stage

- (a) A round shall not be scored unless at least one race has been completed in each match in that round. The final and petit-final are separate rounds.
- (b) The winner of a match shall be the first team to score the number of race wins stated in the notice of race or sailing instructions. If a match is terminated, the winner shall be the team with the higher number of race wins in that match or, if this is a tie, the team that won the last race of the match.

- (c) (1) Teams that win in a round shall be ranked ahead of those that lose.
- (2) Teams that lose in a round and do not sail again shall be equally ranked.
- (3) In a round that is not scored, teams shall be ranked in order of their places in the previous stage of the event, with teams from different groups ranked separately.

D5 BREAKDOWNS WHEN BOATS ARE SUPPLIED BY THE ORGANIZING AUTHORITY

- D5.1** Rule D5 applies when boats are supplied by the organizing authority.
- D5.2** When a boat suffers a breakdown in the racing area, she may request a score change by displaying a red flag at the first reasonable opportunity after the breakdown until it is acknowledged by the race committee or by an umpire. If possible, she shall continue racing.
- D5.3** The race committee shall decide requests for a score change in accordance with rules D5.4 and D5.5. It may take evidence in any way it considers appropriate and may communicate its decision orally.
- D5.4** When the race committee decides that the team's score was made significantly worse, that the breakdown was through no fault of the crew, and that in the same circumstances a reasonably competent crew would not have been able to avoid the breakdown, it shall make as equitable a decision as possible. This may be to abandon and resail the race or, when the boat's finishing place was predictable, award her points for that place. Any doubt about a boat's position when she broke down shall be resolved against her.
- D5.5** A breakdown caused by defective supplied equipment or a breach of a rule by an opponent shall not normally be determined to be the fault of the crew, but one caused by careless handling, capsizing or a breach by a boat on the same team shall be. If there is doubt, it shall be presumed that the crew are not at fault.

APPENDIX E

RADIO SAILING RACING RULES

Radio sailing races shall be sailed under The Racing Rules of Sailing as changed by this appendix.

Note: Development Rules for Umpired Radio Sailing is available on the World Sailing website.

E1 CHANGES TO THE DEFINITIONS, TERMINOLOGY AND THE RULES OF PARTS 1, 2 AND 7

E1.1 Definitions

Add to the definition [Conflict of Interest](#):

However, an observer does not have a [conflict of interest](#) solely by being a competitor.

In the definition [Zone](#) the distance is changed to four hull lengths.

Add new definition:

Disabled A boat is *disabled* while she is unable to continue in the heat.

E1.2 Terminology

The Terminology paragraph of the Introduction is changed so that:

- (a) 'Boat' means a sailboat that is subject to the [rules](#), controlled by radio signals and has no crew. However, in the rules of [Part 1](#) and [Part 5](#), rule E6 and the definitions [Party](#) and [Protest](#), 'boat' includes the competitor controlling her.
- (b) 'Competitor' means the person designated to control a boat using radio signals.
- (c) In the racing rules, but not in its appendices, replace the noun 'race' with 'heat'. In Appendix E a race consists of one or more heats and is completed when the last heat in the race is completed.

E1.3 Rules of Parts 1, 2 and 7

- (a) Rule [1.2](#) is deleted.
- (b) Hails under rules [20.1](#) and [20.3](#) shall include the sail number of the hailing boat followed by 'Room to tack'.
- (c) Rule [22](#) is changed to: 'If possible, a boat shall avoid a boat that is *disabled*.'
- (d) Rule [90.2\(c\)](#) is changed to:
Changes to the sailing instructions may be communicated orally to all affected competitors before the warning signal of the relevant race or heat. When appropriate, changes shall be confirmed in writing.

E2 ADDITIONAL RULES WHEN RACING

Rule E2 applies only while boats are [racing](#).

E2.1 Hailing Requirements

- (a) A hail shall be made and repeated as appropriate so that the competitors to whom the hail is directed might reasonably be expected to hear it.
- (b) When a [rule](#) requires a boat to hail or respond, the hail shall be made by the competitor controlling the boat.
- (c) The individual digits of a boat's sail number shall be hailed; for example 'one five', not 'fifteen'.

E2.2 Giving Advice

A competitor shall not give tactical or strategic advice to a competitor controlling a boat that is [racing](#).

E2.3 Boat Out of Radio Control

A competitor whose boat loses radio control shall promptly hail '(The boat's sail number) out of control' and the boat shall retire.

E2.4 Transmitter Aerials

If a transmitter aerial is longer than 200mm when extended, the extremity shall be adequately protected.

E2.5 Radio Interference

Transmission of radio signals that cause interference with the control of other boats is prohibited. A competitor that has broken

this rule shall not *race* again until permitted to do so by the race committee.

E3 CONDUCT OF A RACE

E3.1 Control Area

Unless the sailing instructions specify a control area, it shall be unrestricted. Competitors shall be in this area when controlling boats that are [racing](#), except briefly to handle and then release or relaunch the boat.

E3.2 Launching Area

Unless the sailing instructions specify a launching area and its use, it shall be unrestricted.

E3.3 Course Board

When the sailing instructions require a course board to be displayed, it shall be located in or adjacent to the control area.

E3.4 Starting and Finishing

(a) Rule [26](#) is changed to:

Heats shall be started using warning, preparatory and starting signals at one-minute intervals. During the minute before the starting signal, additional sound or oral signals shall be made at ten-second intervals, and during the final ten seconds at one-second intervals. Each signal shall be timed from the beginning of its sound.

(b) The starting and finishing lines shall be between the course sides of the starting and finishing [marks](#).

E3.5 Individual Recall

Rule [29.1](#) is changed to:

When at a boat's starting signal any part of her hull is on the course side of the starting line or when she must comply with rule [30.1](#), the race committee shall promptly hail 'Recall (sail numbers)'. If rule [30.3](#) or [30.4](#) applies this rule does not.

E3.6 General Recall

Rule [29.2](#) is changed to:

When at the starting signal the race committee is unable to identify boats that are on the course side of the starting line or to which rule [30](#) applies, or there has been an error in the starting procedure, the race committee may hail 'General recall' and make two loud sounds. The warning signal for a new start will normally be made shortly thereafter.

E3.7 U Flag and Black Flag Rules

When the race committee informs a boat that she has broken rule [30.3](#) or [30.4](#), the boat shall immediately leave the course area.

E3.8 Other Changes to the Rules of Part 3

- (a) Rules [30.2](#) and [33](#) are deleted.
- (b) All race committee signals shall be made orally or by other sounds. No visual signals are required unless specified in the sailing instructions.
- (c) Courses shall not be shortened.
- (d) Rule [32.1\(a\)](#) is changed to: 'because of foul weather or thunderstorms,'.

E3.9 Disabled Competitors

The race committee may make or permit reasonable arrangements to assist disabled competitors to compete on as equal terms as possible. A boat or the competitor controlling her that receives any such assistance, including help from a [support person](#), does not break rule [41](#).

E4 RULES OF PART 4

E4.1 Deleted Rules in Part 4

Rules [40](#), [44.3](#), [45](#), [48](#), [49](#), [50](#), [52](#), [54](#), [55](#) and [56](#) are deleted.

E4.2 Outside Help

Rule [41](#) is changed to:

A boat or the competitor controlling her shall not receive help from any outside source, except

- (a) help needed as a direct result of a competitor becoming ill, injured or in danger;
- (b) when the boat is entangled with another boat, help from the other competitor;
- (c) when the boat is *disabled* or in danger, help from the race committee;
- (d) help in the form of information freely available to all competitors;
- (e) unsolicited information from a disinterested source. A competitor is not a disinterested source unless acting as an observer.

E4.3 Taking a Penalty

Rule [44.1](#) is changed to:

A boat may take a One-Turn Penalty when she may have broken one or more rules of [Part 2](#), or rule [31](#), in an incident while *racing*. However,

- (a) when she may have broken a rule of [Part 2](#) and rule [31](#) in the same incident she need not take the penalty for breaking rule [31](#);
- (b) if the boat gained an advantage in the heat or race by her breach despite taking a penalty, her penalty shall be additional One-Turn Penalties until her advantage is lost;
- (c) if the boat caused serious damage, or as a result of breaking a rule of [Part 2](#) she caused another boat to become *disabled* and retire, her penalty shall be to retire.

E4.4 Person in Charge

Rule [46](#) is changed to: 'The member or organization that entered the boat shall designate the competitor. See rule [75](#).'

E5 RACING WITH OBSERVERS AND UMPIRES

E5.1 Observers

- (a) The race committee may appoint observers, who may be competitors.
- (b) Observers shall hail the sail numbers of boats that make contact with a *mark* or another boat.

- (c) At the end of a heat, observers shall report to the race committee all unresolved incidents, and any failure to sail the course.

E5.2 Rules for Observers and Umpires

Observers and umpires shall be located in the control area. They shall not use any aid or device that gives them a visual advantage over competitors.

E6 PROTESTS AND REQUESTS FOR REDRESS

E6.1 Protest Validity

Rule 60.4(a)(2) is changed to:

- (a) A protest is invalid
- (2) if it is from a boat that alleges a breach of a rule of Part 2, 3 or 4, but was not scheduled to sail in the heat where the incident occurred, or

Add new rule 60.4(a)(4):

- (a) A protest is invalid
- (4) if it is from a boat or competitor and alleges a breach of rule E2 or E3.7.

E6.2 Protest for a Rule Broken by a Competitor

When a committee learns that a competitor may have broken a rule, it may protest the boat controlled by that competitor.

E6.3 Informing the Protestee

Rule 60.2(a)(1) is changed to:

- (1) If the protestor is a boat, she shall hail '(Her own sail number) protest (the sail number of the other boat)'.

E6.4 Informing the Race Committee

The boat protesting or requesting redress about an incident while racing shall inform the race committee as soon as reasonably possible after finishing or retiring.

E6.5 Time Limits

A protest, request for redress or request for reopening shall be delivered to the race committee no later than ten minutes after

the last boat in the heat finishes or after the relevant incident, whichever is later.

E6.6 Redress Decisions

Rules 61.4(b)(2) and 61.4(b)(3) are changed to:

- (2) injury, physical damage or becoming *disabled* because of the action of a boat that was breaking a rule of Part 2 and took an appropriate penalty or was penalized,
- (3) injury, physical damage or becoming *disabled* because of the action of a vessel not racing that was required to keep clear or is determined to be at fault under the *IRPCAS* or a government right-of-way rule.

Add new rule 61.4(b)(6):

- (6) external radio interference acknowledged by the race committee.

Add to rule 61.4(c):

If a boat is given redress because she was damaged, her redress shall include reasonable time, but not more than 30 minutes, to make repairs before her next heat.

E6.7 Rights of Parties

In rule 63.1(a)(4) 'the representatives of boats shall have been on board' is changed to 'the representative of each boat shall be the competitor designated to control her'.

E6.8 Hearing Procedure

Add new rule 63.4(f):

- (f) When the protest concerns an alleged breach of a rule of Part 2, 3 or 4, any witness shall have been in the control area at the time of the incident. A witness who is a competitor, and who was not acting as an observer, must also have been scheduled to race in the relevant heat.

E7 PENALTIES

When a protest committee decides that a boat that is a party to a protest hearing has broken a rule other than a rule of Part 2, 3 or 4, it shall either

- (a) disqualify her or add any number of points (including zero and fractions of points) to her score. The penalty shall be applied, if possible, to the heat or race in which the [rule](#) was broken; otherwise it shall be applied to the next heat or race for that boat. When points are added, the scores of other boats shall not be changed; or
- (b) require her to take one or more One-Turn Penalties that shall be taken as soon as possible after the starting signal of her next heat that is started and not subsequently recalled or [abandoned](#).

However, if the boat has broken a rule in [Appendix G](#) or rule E8, the protest committee shall act in accordance with rule G4.

E8 CHANGES TO APPENDIX G, IDENTIFICATION ON SAILS

Rule G1, except the table of National Sail Letters, and rule G2 are changed to:

G1 WORLD SAILING AND IRSA CLASS BOATS

Rule G1 applies to every boat of a class administered or recognized by World Sailing or by the International Radio Sailing Association (IRSA).

G1.1 Identification

- (a) Unless her class rules state otherwise, a boat of a World Sailing or IRSA Class shall comply with rule G1 and shall carry:
 - (1) on her mainsail, her class insignia and national letters (if required).
 - (2) on all sails, her sail number.
- (b) Sails shall comply with rule E8 at world and continental championships. At other events, they shall comply with these rules or the rules applicable at the time of their initial certification.

G1.2 National Letters

At IRSA world and continental championships and events described as international events in their notices of race, a

boat shall carry national letters from the table in Appendix G, rule G1 denoting:

- (a) when entered under rule [75\(a\)](#), the boat's national authority, or
- (b) the competitor's country of residence, or
- (c) the national authority of the owner or competitor.

Note: An up-to-date version of the National Sail Letters table is available on the World Sailing website.

G1.3 Sail Numbers

- (a) The sail number shall be the last two digits of:
 - (1) the hull registration number, or
 - (2) the competitor's or the owner's personal number allotted by the relevant issuing authority.
- (b) A single digit hull number or personal number shall be preceded by a zero.
- (c) If there is conflict between sail numbers, or if a sail number may be misread, the race committee shall require that the sail numbers of one or more boats be changed to numeric alternatives.

G1.4 Specifications

- (a) National letters and sail numbers shall be in capital letters and Arabic numerals, clearly legible and of the same colour. The colour shall contrast with the colour of the body of the sail. Commercially available typefaces giving the same or better legibility than Helvetica are acceptable. Digital fonts are not acceptable.

- (b) The height and spacing of letters and numbers shall be as follows:

<i>Dimension</i>	<i>Minimum</i>	<i>Maximum</i>
Height of sail numbers	100 mm	110 mm
Spacing of adjacent sail numbers	20 mm	30 mm
Height of national letters	60 mm	70 mm
Spacing of adjacent national letters	13 mm	23 mm

G1.5 Positioning

- (a) Class insignia, sail numbers and national letters shall be positioned
- (1) on both sides of the sail;
 - (2) with those on the starboard side uppermost;
 - (3) approximately horizontally;
 - (4) with space for a prefix '1' in front of the sail number; and
 - (5) with no less than 40 mm vertical spacing between lines of numbers and letters on opposite sides of the sail.

However, symmetrical or reversed class insignia may be positioned back to back.

- (b) Symmetrical or reversed class insignia shall be on the mainsail, above a line perpendicular to the luff through the three-quarter leech point, and may be positioned back-to-back. Otherwise, the vertical spacing shall be no less than 20 mm.
- (c) On a mainsail, sail numbers shall be positioned
- (1) below class insignia;
 - (2) above the line perpendicular to the luff through the quarter leech point;
 - (3) above national letters.

G1.6 Exceptions

Where the size of the sail prevents compliance with rule G1.4 or G1.5, they shall be amended as follows and in the following order of precedence:

- (a) sail numbers may extend below the specified line;
- (b) vertical spacing may be reduced to no less than 20 mm:
 - (1) first between sail numbers and national letters, and
 - (2) then between national letters;
- (c) height of national letters may be reduced to no less than 40 mm or shall be omitted;
- (d) vertical spacing of sail numbers may be reduced to no less than 20 mm;
- (e) height of sail numbers shall be reduced to less than 90 mm, but no less than 80 mm, or shall be omitted except on the largest sail.

G2 OTHER BOATS

Other boats shall comply with rule E8 unless the rules regarding the allotment, carrying and size of insignia, letters and numbers are changed by their national authority or class association. Such changed rules shall, when practicable, conform to the above requirements.

APPENDIX F

KITEBOARDING RACING RULES

*Kiteboarding course races shall be sailed under The Racing Rules of Sailing as changed by this appendix. The term 'boat' elsewhere in the **rules** means 'kiteboard' or 'boat' as appropriate.*

Note: Links to kiteboard rules for some other formats or competitions can be found on the World Sailing website.

CHANGES TO THE DEFINITIONS

The definitions [Clear Astern](#) and [Clear Ahead](#); [Overlap](#), [Continuing Obstruction](#), [Finish](#), [Keep Clear](#), [Leeward and Windward](#), [Mark-Room](#), [Obstruction](#), [Start](#), [Tack](#), [Starboard](#) or [Port](#) and [Zone](#) are changed to:

Clear Astern and Clear Ahead; Overlap One kiteboard is *clear astern* of another when her hull is behind a line abeam from the aftermost point of the other kiteboard's hull. The other kiteboard is *clear ahead*. They *overlap* when neither is *clear astern*. However, they also *overlap* when a kiteboard between them *overlaps* both. If there is reasonable doubt that two kiteboards are *overlapped*, it shall be presumed that they are not. These terms always apply to kiteboards on the same *tack*. They apply to kiteboards on opposite *tacks* only when both kiteboards are sailing more than ninety degrees from the true wind.

Continuing Obstruction An *obstruction* is a *continuing obstruction* when a kiteboard will pass alongside it for at least 30 metres. However, the following are not a *continuing obstruction*: a vessel under way, a kiteboard [racing](#), or a race committee vessel that is also a [mark](#).

Finish A kiteboard *finishes* when, after her starting signal, while the competitor is in contact with the hull, any part of her hull, or the competitor, crosses the finishing line from the course side. However, she has not *finished* if after crossing the finishing line she

- (a) takes a penalty under rule [44.2](#),

- (b) corrects an error in *sailing the course* made at the line, or
- (c) continues to [sail the course](#).

After *finishing* she need not cross the finishing line completely. The sailing instructions may change the direction in which kiteboards are required to cross the finishing line to *finish*.

Keep Clear A kiteboard *keeps clear* of a right-of-way kiteboard

- (a) if the right-of-way kiteboard can sail her course with no need to take avoiding action and,
- (b) if the right-of-way kiteboard can also change course in both directions or move her kite in any direction without immediately making contact.

Leeward and Windward A kiteboard's *leeward* side is the side that is or, when she is head to wind, was away from the wind. However, when sailing by the lee or directly downwind, her *leeward* side is the side on which her kite lies. The other side is her *windward* side. When two kiteboards on the same *tack* overlap, the one whose hull is on the *leeward* side of the other's hull is the *leeward* kiteboard. The other is the *windward* kiteboard.

Mark-Room *Room* for a kiteboard to sail no farther from the [mark](#) than needed to sail her [proper course](#) to round or pass the [mark](#) on the required side, and *room* to pass a finishing [mark](#) after *finishing*.

Obstruction An *obstruction* is

- (a) an object that a kiteboard could not pass without substantially changing her course or the position of her kite, if she were sailing directly towards it and 10 metres from it;
- (b) an object that can be safely passed on only one side; or
- (c) an object that is so designated in a [rule](#).

However, a kiteboard [racing](#) is not an *obstruction* to other kiteboards unless they are required to *keep clear* of her or, if rule [22](#) applies, avoid her.

Start A kiteboard *starts* when, her hull and the competitor having been entirely on the pre-start side of the starting line at or after her starting signal, any part of her hull or the competitor crosses the starting line from the pre-start side to the course side.

Tack, Starboard or Port A kiteboard is on the *tack*, *starboard* or *port*, corresponding to the competitor's hand that would be forward if the competitor were in normal riding position (riding heel side with both hands on the control bar and arms not crossed). A kiteboard is on *starboard tack* when the competitor's right hand would be forward and is on the *port tack* when the competitor's left hand would be forward.

Zone The area around a [mark](#) within a distance of 30 metres. A kiteboard is in the *zone* when any part of her hull is in the *zone*.

Add the following definitions:

Capsized A kiteboard is *capsized* if

- (a) her kite is in the water, or
- (b) her lines are tangled with another kiteboard's lines.

Jumping A kiteboard is *jumping* when her hull, its appendages and the competitor are clear of the water.

Recovering A kiteboard is *recovering* from the time she loses steerage way until she regains it, unless she is *capsized*.

F1 CHANGES TO THE RULES OF PART 1

[No changes.]

F2 CHANGES TO THE RULES OF [PART 2](#)

PART 2 — PREAMBLE

In the second sentence of the preamble, 'injury or serious damage' is changed to 'injury, serious damage or a tangle'.

13 WHILE TACKING

Rule [13](#) is deleted.

16 CHANGING COURSE OR KITE POSITION

Rule [16](#) is changed to:

- 16.1** When a right-of-way kiteboard changes course or the position of her kite, she shall give the other kiteboard *room* to continue *keeping clear*.
- 16.2** In addition, on a beat to windward when a *port-tack* kiteboard is *keeping clear* by sailing to pass to leeward of a *starboard-tack* kiteboard, the *starboard-tack* kiteboard shall not bear away or change the position of her kite if as a result the *port-tack* kiteboard must change course or the position of her kite immediately to continue *keeping clear*.

17 ON THE SAME TACK; PROPER COURSE

Rule [17](#) is deleted.

18 MARK-ROOM

Rule [18](#) is changed to:

18.1 When Rule 18 Applies

Rule 18 applies between kiteboards when they are required to leave a [mark](#) on the same side and at least one of them is in the *zone*. However, it does not apply

- (a) between kiteboards that are on opposite *tacks* when the first kiteboard reaches the *zone*; or
- (b) between a kiteboard approaching a [mark](#) and one leaving it.

Rule 18 no longer applies between kiteboards when either kiteboard referred to in this rule changes *tack* or *mark-room* has been given.

18.2 Giving Mark-Room

- (a) When the first of two kiteboard reaches the *zone*,
 - (1) if the kiteboards are *overlapped*, the outside kiteboard at that moment shall give the inside kiteboard *mark-room*.
 - (2) if the kiteboards are not *overlapped*, the kiteboard that has not reached the *zone* shall give *mark-room*.

When a kiteboard is required to give [mark-room](#) by this rule, she shall continue to do so for as long as this rule applies, even if later as overlap is broken or a new overlap begins.

- (b) Rule 18.2(a) no longer applies if either kiteboard referred to in this rule changes [tack](#).
- (c) If the kiteboard entitled to [mark-room](#) leaves the zone, the entitlement to [mark-room](#) ceases and rule 18.2(a) is applied again if required based on the relationship of the kiteboards at the time rule 18.2(a) is re-applied.

18.3 Changing Tack in the Zone

When an inside *overlapped* right-of-way kiteboard must change *tack* at a [mark](#) to sail her [proper course](#), until she changes *tack* she shall sail no farther from the [mark](#) than needed to sail that course if by so doing she affects the course of another kiteboard. Rule 18.3 does not apply at a gate [mark](#) or a finishing [mark](#).

19 ROOM TO PASS AN OBSTRUCTION

Rule [19.2\(a\)](#) is changed to:

- (a) A right-of-way kiteboard may choose to pass an *obstruction* on her port or starboard side. If a right-of-way kiteboard changes course or the position of her kite when choosing on which side to pass the *obstruction*, she shall give the other kiteboard *room to keep clear*.

20 ROOM TO TACK AT AN OBSTRUCTION

Rule [20.1\(a\)](#) is changed to:

- (a) she is approaching an *obstruction*, and, to avoid it safely, will soon need to make a substantial change of her course or the position of her kite, and

Rule [20.4](#) is changed to:

20.4 Additional Requirements for Hails

The following arm signals are required in addition to the hails

- (a) for 'Room to tack', repeatedly and clearly circling one hand over the head; and
- (b) for 'You tack', repeatedly and clearly pointing at the other kiteboard and waving the arm to windward.

SECTION D — PREAMBLE

The preamble to Section D is changed to:

When rule [21](#) or [22](#) applies between two kiteboards, Section A and C rules do not.

21 STARTING ERRORS; TAKING PENALTIES; JUMPING

Rule [21.3](#) is changed and new rule 21.4 is added:

21.3 During the last minute before her starting signal, a kiteboard that stops, slows down significantly, or one that is not making significant forward progress shall *keep clear* of all others unless she is accidentally *capsized*.

21.4 A kiteboard that is *jumping* shall *keep clear* of one that is not.

22 CAPSIZED; RECOVERING; AGROUND; RESCUING

Rule [22](#) is changed to:

22.1 If possible, a kiteboard shall avoid a kiteboard that is *capsized*, is aground, or is trying to help a person or vessel in danger.

22.2 A kiteboard that is *recovering* shall *keep clear* of a kiteboard that is not.

F3 CHANGES TO THE RULES OF PART 3

26 STARTING RACES

Rule [26](#) is changed to:

Races shall be started by using the following signals. Times shall be taken from the visual signals; the absence of a sound signal shall be disregarded.

<i>Minutes before starting signal</i>	<i>Visual signal</i>	<i>Sound signal</i>	<i>Means</i>
3	Class flag	One	Warning signal
2	U or black flag	One	Preparatory signal
1	U or black flag removed	One long	One minute removed
0	Class flag removed	One	Starting signal

29 RECALLS

Rule [29.1](#) is deleted.

30 STARTING PENALTIES

Rules [30.1](#) and [30.2](#) are deleted.

In rules [30.3](#) and [30.4](#), 'hull' is changed to 'hull or competitor'.

In rule [30.4](#), 'sail number' is changed to 'competitor number'.

36 RACES RESTARTED OR RESAILED

Rule [36\(b\)](#) is changed to:

- (b) cause a kiteboard to be penalized except under rule [2](#), [30.4](#) or [69](#) or under rule [14](#) when she has caused injury, serious damage or a tangle.

F4 CHANGES TO THE RULES OF [PART 4](#)

41 OUTSIDE HELP

Add new rules 41(e) and 41(f):

- (e) help from another competitor in the same race to assist a relaunch;
- (f) help to change equipment, but only in the launching area.

42 PROPULSION

Rule [42](#) is changed to:

42.1 Basic Rule

Except when permitted in rule 42.2, a kiteboard shall compete by using only the wind and water to increase, maintain or decrease her speed.

42.2 Exceptions

- (a) A kiteboard may be propelled by unassisted actions of the competitor on the kiteboard.
- (b) A competitor may swim, walk or paddle while *capsized* or *recovering*, provided that the kiteboard does not gain a significant advantage in the race.
- (c) Any means of propulsion may be used to help a person or another vessel in danger.

43 EXONERATION

Rule [43.1\(c\)](#) is changed to:

- (c) A right-of-way kiteboard, or one sailing within the *room* or *mark-room* to which she is entitled, is exonerated for breaking rule [14](#) if the contact does not cause damage, injury or a tangle.

Add new rule 43.1(d):

- (d) When a kiteboard breaks rule [15](#) and there is no contact, she is exonerated for her breach.

44 PENALTIES AT THE TIME OF AN INCIDENT

Rules [44.1](#) and [44.2](#) are changed to:

44.1 Taking a Penalty

A kiteboard may take a One-Turn Penalty when she may have broken one or more rules of [Part 2](#) or rule [31](#) in an incident while *racing*. Alternatively, the notice of race or sailing instructions may specify the use of the Scoring Penalty or some other penalty, in which case the specified penalty shall replace the One-Turn Penalty. However,

- (a) when a kiteboard may have broken a rule of [Part 2](#) and rule [31](#) in the same incident she need not take the penalty for breaking rule [31](#); and

- (b) if the kiteboard caused injury, serious damage or a tangle or, despite taking a penalty, gained a significant advantage or caused significant disadvantage to the other kiteboard in the race or series by her breach, her penalty shall be to retire.

44.2 One-Turn Penalty

After getting well clear of other kiteboards as soon after the incident as possible, a kiteboard takes a One-Turn Penalty by promptly making a 360° turn with her hull appendage in the water with no requirement for a tack or a gybe. When a kiteboard takes the penalty at or near the finishing line, her hull and competitor shall be completely on the course side of the line before she *finishes*.

50 COMPETITOR CLOTHING AND EQUIPMENT

Rule [50.1](#)(a) is changed to:

- (a) Competitors shall not wear or carry clothing or equipment for the purpose of increasing their weight. However, a competitor may wear a drinking container that shall have a capacity of at least one litre and weigh no more than 1.5 kilograms when full.

PART 4 RULES DELETED

Rules [45](#), [48.2](#), [49](#), [50.2](#), [51](#), [52](#), [54](#), [55](#) and [56.1](#) are deleted.

F5 CHANGES TO THE RULES OF PART 5

60 PROTESTS

60.2 Intention to Protest

Rules [60.2\(a\)](#), [60.2\(b\)](#) and [60.2\(c\)](#) are changed to:

- (a) If a *protest* concerns an incident observed by the protestor in the racing area:
- (1) If the protestor is a kiteboard, she shall hail 'Protest' at the first reasonable opportunity.
 - (2) If the protestor is a [committee](#), it shall inform the kiteboard after the race within the protest time limit of its intention to protest her.

- (b) However, if
- (1) the protestee is not within hailing distance at the time of the incident,
 - (2) the incident was an error in *sailing the course*,
 - (3) the incident was not observed by the protestor in the racing area, or
 - (4) a protest committee decides to protest a kiteboard under rule [60.4\(c\)](#),
- then the only requirement for the protestor is to inform the protestee of its intention to protest at the first reasonable opportunity.
- (c) If at the time of the incident it is obvious to a protesting kiteboard that a member of either crew is in danger, or that injury, serious damage or a tangle has resulted, rules [60.2\(a\)](#) and [60.2\(b\)](#) do not apply to her, but she shall attempt to inform the other kiteboard within the protest time limit of her intention to protest.

60.5 Protest Decisions

Rules [60.5\(d\)\(1\)](#) and [60.5\(d\)\(2\)](#) are changed to:

- (d) If the protest committee decides that a kiteboard has deviations in excess of acceptable manufacturing tolerances:
- (1) The kiteboard shall not be penalized if any deviations in excess of tolerances specified were caused by damage or normal wear and they did not improve the performance of the kiteboard.
 - (2) However, the kiteboard shall not *race* again until any such deviations have been corrected unless the protest committee decides there is, or has been, no reasonable opportunity to do so.

Add new rule 60.5(e):

- (e) If the protest committee decides that a kiteboard has broken a [rule](#) and is not exonerated and, as a result,

caused a tangle for the second or subsequent time during the event, her penalty shall be a disqualification that is not excludable.

63 CONDUCT OF HEARINGS

63.5 Decisions

Rule [63.5\(d\)](#) is changed to:

- (d) When the protest committee is in doubt about any matter concerning the measurement of a kiteboard, the interpretation of a class rule, or a matter involving damage to a kiteboard, it shall refer its questions, together with the relevant facts, to an authority responsible for interpreting the rule. In making its decision, the committee shall be bound by the reply of the authority.

Add new rule 63.8:

63.8 Hearing Procedure for an Elimination Series

For a race of an elimination series that will qualify a kiteboard to compete in a later stage of an event:

- (a) Rules [60.3\(a\)](#) and [\(b\)](#), [61.2\(a\)](#), [63.6\(b\)](#) are deleted.

- (b) Rule [63.4](#) is changed to:

Protests and requests for redress need not be in writing; they shall be made orally to a member of the protest committee as soon as reasonably possible following the race. The protest committee may take evidence in any way it considers appropriate and may communicate its decision orally.

70 APPEALS AND REQUESTS TO A NATIONAL AUTHORITY

Add new rule 70.6:

- 70.6** Appeals are not permitted in disciplines and formats with elimination series.

[No changes.]

F7 CHANGES TO THE RULES OF PART 7

90 RACE COMMITTEE; SAILING INSTRUCTIONS; SCORING

The last sentence of rule [90.2\(c\)](#) is changed to: ‘Oral instructions may be given only if the procedure is stated in the sailing instructions.’

F8 CHANGES TO APPENDIX A

A1 NUMBER OF RACES; OVERALL SCORES

Rule A1 is changed to:

The number of races scheduled and the number required to be scored to constitute a series shall be stated in the notice of race or sailing instructions. If an event includes more than one discipline or format, the notice of race or sailing instructions shall state how the overall scores are to be calculated; see rule [90.3\(a\)](#).

A5 SCORES DETERMINED BY THE RACE COMMITTEE

Rule A5.2 is changed to:

A5.2 A kiteboard that did not [sail the course](#), retired or was disqualified shall be scored points for the finishing place one more than the number of kiteboards entered in the series or, in a race of an elimination series, the number of kiteboards in that heat.

A10 SCORING ABBREVIATIONS

Add to Rule A10:

DCT Disqualified after causing a tangle in an incident

F9 CHANGES TO APPENDIX G

[Appendix G](#) is changed to:

Appendix G — Identification

G1 Every kiteboard shall be identified as follows:

- (a) Each competitor shall be provided with and wear a bib with a personal competition number of no more

than three digits. The bib shall be worn as intended with the competition number clearly displayed.

- (b) The numbers shall be displayed as high as possible on the front, back and sleeves of the bib. They should be at least 20 cm tall on the back and at least 6 cm tall on the front and the sleeves.
- (c) The numbers shall be Arabic numerals, all of the same solid colour, clearly legible and in a commercially available typeface giving the same or better legibility as Helvetica. The colour of the numbers shall contrast with the colour of the bib.

APPENDIX G

IDENTIFICATION ON SAILS

See rule [77](#).

G1 WORLD SAILING CLASS BOATS

G1.1 Identification

Every boat of a World Sailing Class shall carry on her mainsail and, as provided in rule G1.3(c) for letters and numbers only, on her spinnaker and headsail

- (a) the insignia denoting her class;
- (b) at all international events, except when the boats are provided to all competitors, national letters denoting her national authority from the table below. For the purposes of this rule, international events are World Sailing events, world and continental championships, and events described as international events in their notices of race; and
- (c) a sail number of no more than four digits allotted by her national authority or, when so required by the class rules, by the class association. The four-digit limitation does not apply to classes whose World Sailing membership or recognition took effect before 1 April 1997. Alternatively, if permitted in the class rules, an owner may be allotted a personal sail number by the relevant issuing authority, which may be used on all the owner's boats in that class.

Sails measured before 31 March 1999 shall comply with rule G1.1 or with the rules applicable at the time of measurement.

Note: An up-to-date version of the table below is available on the World Sailing website.

NATIONAL SAIL LETTERS

<i>National authority</i>	<i>Letters</i>
Algeria	ALG
American Samoa	ASA
Andorra	AND
Angola	ANG
Antigua	ANT
Argentina	ARG
Armenia	ARM
Aruba	ARU
Australia	AUS
Austria	AUT
Azerbaijan	AZE
Bahamas	BAH
Bahrain	BRN
Barbados	BAR
Belarus	BLR
Belgium	BEL
Belize	BIZ
Bermuda	BER
Bolivia	BOL
Botswana	BOT
Brazil	BRA
British Virgin Islands	IVB
Brunei	BRU
Bulgaria	BUL
Cambodia	CAM
Canada	CAN
Cayman Islands	CAY
Chile	CHI
China, PR	CHN
Chinese Taipei	TPE
Colombia	COL
Cook Islands	COK
Croatia	CRO
Cuba	CUB
Cyprus	CYP
Czechia	CZE

Denmark	DEN
Djibouti	DJI
Dominican Republic	DOM
Ecuador	ECU
<i>National authority</i>	<i>Letters</i>
Egypt	EGY
El Salvador	ESA
Estonia	EST
Fiji	FIJ
Finland	FIN
France	FRA
Georgia	GEO
Germany	GER
Great Britain	GBR
Greece	GRE
Grenada	GRN
Guam	GUM
Guatemala	GUA
Hong Kong, China	HKG
Hungary	HUN
Iceland	ISL
India	IND
Indonesia	INA
Iran	IRI
Iraq	IRQ
Ireland	IRL
Israel	ISR
Italy	ITA
Jamaica	JAM
Japan	JPN
Jordan	JOR
Kazakhstan	KAZ
Kenya	KEN
Korea, DPR	PRK
Korea, Republic of	KOR
Kosovo	KOS
Kuwait	KUW

Appendix G IDENTIFICATION ON SAILS

Kyrgyzstan	KGZ	Puerto Rico	PUR
Latvia	LAT	Qatar	QAT
Lebanon	LIB	Romania	ROU
Libya	LBA	Russia	RUS
Liechtenstein	LIE	<i>National authority</i>	<i>Letters</i>
Lithuania	LTU	Samoa	SAM
Luxembourg	LUX	San Marino	SMR
<i>National authority</i>	<i>Letters</i>	Saudi Arabia	KSA
Macau, China	MAC	Senegal	SEN
Madagascar	MAD	Serbia	SRB
Malaysia	MAS	Seychelles	SEY
Malta	MLT	Singapore	SGP
Mauritius	MRI	Slovak Republic	SVK
Mexico	MEX	Slovenia	SLO
Moldova	MDA	Solomon Islands	SOL
Monaco	MON	South Africa	RSA
Montenegro	MNE	Spain	ESP
Montserrat	MNT	Sri Lanka	SRI
Morocco	MAR	St Kitts & Nevis	SKN
Mozambique	MOZ	St Lucia	LCA
Myanmar	MYA	St Vincent & Grenadines	VIN
Namibia	NAM	Sudan	SUD
Netherlands	NED	Sweden	SWE
Netherlands Antilles	AHO	Switzerland	SUI
New Zealand	NZL	Tahiti	TAH
Nicaragua	NCA	Tajikistan	TJK
Nigeria	NGR	Tanzania	TAN
North Macedonia	MKD	Thailand	THA
Norway	NOR	Timor Leste	TLS
Oman	OMA	Tonga	TGA
Pakistan	PAK	Trinidad & Tobago	TTO
Palestine	PLE	Tunisia	TUN
Panama	PAN	Turkey	TUR
Papua New Guinea	PNG	Turks & Caicos	TCA
Paraguay	PAR	Uganda	UGA
Peru	PER	Ukraine	UKR
Philippines	PHI	United Arab Emirates	UAE
Poland	POL		
Portugal	POR		

United States of America	USA	Vanuatu	VAN
Uruguay	URU	Venezuela	VEN
US Virgin Islands	ISV	Vietnam	VIE
		Zimbabwe	ZIM

G1.2 Specifications

- (a) National letters and sail numbers shall be:
- (1) in capital letters and Arabic numerals,
 - (2) of the same colour,
 - (3) of a contrasting colour to the body of the sail, and
 - (4) of a sans-serif typeface.

In addition, the letters and numbers identifying the boat shall be clearly legible when the sail is set.

- (b) The height of characters and space between adjoining characters on the same and opposite sides of the sail shall be related to the boat's overall length as follows:

<i>Overall length</i>	<i>Minimum height</i>	<i>Minimum space between characters and from edge of sail</i>
Under 3.5 m	230 mm	45 mm
3.5 m – 8.5 m	300 mm	60 mm
8.5 m – 11 m	375 mm	75 mm
Over 11 m	450 mm	90 mm

G1.3 Positioning

Class insignia, national letters and sail numbers shall be positioned as follows:

- (a) General
- (1) Class insignia, national letters and sail numbers, where applicable, shall be placed on both sides and such that those on the starboard side are uppermost.
 - (2) National letters shall be placed above the sail numbers on each side of the sail.

(b) Mainsails

- (1) The class insignia, national letters and sail numbers shall, if possible, be wholly above an arc whose centre is the head point and whose radius is 60% of the leech length.
- (2) The class insignia shall be placed above the national letters. If the class insignia is of a design that it may be placed back to back, then it may be so placed.

(c) Headsails and Spinnakers

- (1) National letters and sail numbers are only required on a headsail whose foot length is greater than 1.3 x foretriangle base.
- (2) The national letters and sail numbers of headsails shall be displayed wholly below an arc whose centre is the head point and whose radius is 50% of the luff length and, if possible, wholly above an arc whose radius is 75% of the luff length.
- (3) The national letters and sail number shall be displayed on the front side of a spinnaker but may be placed on both sides. They shall be displayed wholly below an arc whose centre is the head point and whose radius is 40% of the foot median and, if possible, wholly above an arc whose radius is 60% of the foot median.

G2 OTHER BOATS

Other boats shall comply with the rules of their national authority or class association in regard to the allotment, carrying and size of insignia, letters and numbers. Such rules shall, when practicable, conform to the above requirements.

G3 CHARTERED OR LOANED BOATS

When so stated in the notice of race or sailing instructions, a boat chartered or loaned for an event may carry national letters or a sail number in contravention of her class rules.

G4 WARNINGS AND PENALTIES

When a protest committee finds that a boat has broken a rule of this appendix, it shall either warn her and give her time to comply or penalize her.

G5 CHANGES BY CLASS RULES

World Sailing Classes may change the rules of this appendix provided the changes have first been approved by World Sailing.

APPENDIX H

WEIGHING CLOTHING AND EQUIPMENT

See rule [50](#). *This appendix shall not be changed by the notice of race, sailing instructions or prescriptions of national authorities.*

- H1** Items of clothing and equipment to be weighed shall be arranged on a rack. After being saturated in fresh water the items shall be allowed to drain freely for one minute before being weighed. The rack must allow the items to hang as they would hang from clothes hangers, so as to allow the water to drain freely. Pockets that have drain-holes that cannot be closed shall be empty, but pockets or items that can hold water shall be full.
- H2** When the weight recorded exceeds the amount permitted, the competitor may rearrange the items on the rack and the member of the technical committee in charge shall again soak and weigh them. This procedure may be repeated a second time if the weight still exceeds the amount permitted.
- H3** A competitor wearing a dry suit may choose an alternative means of weighing the items.
- (a) The dry suit and items of clothing and equipment that are worn outside the dry suit shall be weighed as described above.
 - (b) Clothing worn underneath the dry suit shall be weighed as worn while [racing](#), without draining.
 - (c) The two weights shall be added together.

APPENDIX J

NOTICE OF RACE AND SAILING INSTRUCTIONS

See rules [89.2](#) and [90.2](#). In this appendix, the term 'event' includes a race or series of races.

A rule in the notice of race need not be repeated in the sailing instructions.

Care should be taken to ensure that there is no conflict between rules in the notice of race, the sailing instructions or any other document that governs the event.

J1 NOTICE OF RACE CONTENTS

J1.1 The notice of race shall include the following:

- (1) the title, place and dates of the event and name of the organizing authority;
- (2) that the event will be governed by the *rules* as defined in *The Racing Rules of Sailing*;
- (3) a list of any other documents that will govern the event (for example, *The Equipment Rules of Sailing*, to the extent that they apply), stating where or how each document or an electronic copy of it may be obtained;
- (4) the classes to race, any handicap or rating system that will be used, and the classes to which it will apply; conditions of entry and any restrictions on entries;
- (5) the procedures and times for registration or entry, including fees and any closing dates;
- (6) the times of warning signals for the practice race, if one is scheduled, and the first race, and succeeding races if known.

J1.2 The notice of race shall include any of the following that will apply:

- (1) times or procedures for equipment inspection or event measurement, or requirements for measurement or rating certificates;

- (2) changes to the racing rules authorized by World Sailing under rule [86.2](#), referring specifically to each rule and stating the change (also include the statement from World Sailing authorizing the change);
- (3) changes to class rules, as permitted under rule [87](#), referring specifically to each rule and stating the change;
- (4) categorization or classification requirements that some or all competitors must satisfy;
 - (a) for sailor categorization (see rule [79](#) and the World Sailing Sailor Categorization Code), or
 - (b) for functional classification for Para World Sailing events (see World Sailing Para Classification Rules);
- (5) that boats will be required to display advertising chosen and supplied by the organizing authority (see rule 6 and the World Sailing Advertising Code) and other information related to advertising;
- (6) that rule [90.3\(e\)](#) will apply, and any change in the ‘24 hours’ time limit in that rule;
- (7) when entries from other countries are expected, any national prescriptions that may require advance preparation (see rule [88](#));
- (8) prescriptions that will apply if boats will pass through the waters of more than one national authority while *racing*, and when they will apply (see rule [88.1](#));
- (9) alternative communication required in place of hails under rule [20](#) (see rule [20.4\(b\)](#));
- (10) any change in the weight limit for a competitor’s clothing and equipment permitted by rule [50.1\(b\)](#);
- (11) any requirements necessary for compliance with data protection legislation that applies in the venue of the event;
- (12) an entry form, to be signed by the boat’s owner or owner’s representative, containing words such as ‘I agree to be bound by *The Racing Rules of Sailing* and by all other [rules](#) that govern this event.’;
- (13) replacement of the rules of [Part 2](#) with the right-of-way rules of the *International Regulations for Preventing*

Collisions at Sea or other government right-of-way rules, the time(s) or place(s) they will apply, and any night signals to be used by the race committee.

J1.3 The notice of race shall include any of the following that will apply and that would help competitors decide whether to attend the event or that conveys other information they will need before the sailing instructions become available:

- (1) changes to the racing rules permitted by rule [86.1](#), referring specifically to each rule and stating the change;
- (2) changes to the national prescriptions (see rule [88.2](#));
- (3) the time and place at which the sailing instructions will be available;
- (4) a general description of the course, or type of courses, to be sailed;
- (5) the scoring system, if different from the system in Appendix A, included by reference to class rules or other [rules](#) governing the event, or stated in full. State the number of races scheduled and the minimum number that must be scored to constitute a series (see rule A1). If appropriate, for a series where the number of starters may vary substantially, state that rule A5.3 applies;
- (6) the penalty for breaking a rule of [Part 2](#), other than the Two-Turns Penalty;
- (7) the time after which no warning signal will be made on the last scheduled day of racing;
- (8) denial of the right of appeal, subject to rule [70.3](#);
- (9) for chartered or loaned boats, whether rule [G3](#) applies;
- (10) prizes.

J2 SAILING INSTRUCTION CONTENTS

J2.1 Unless included in the notice of race, the sailing instructions shall include the following:

- (1) the information in rules J1.3(1), (2) and (5) and, when applicable, rules J1.3(6), (7), (8), (9) and (10);
- (2) the schedule of races and the times of warning signals for each class;

- (3) a complete description of the course(s) to be sailed, or a list of [marks](#) from which the course will be selected and, if relevant, how courses will be signalled and any change to the direction in which boats are required to cross the finishing line to [finish](#);
- (4) descriptions of [marks](#), including starting and finishing [marks](#), stating the order in which [marks](#) are to be passed and the side on which each is to be left and identifying all rounding [marks](#) (see the definition [Sail the Course](#));
- (5) descriptions of the starting and finishing lines, class flags and any special signals to be used;
- (6) the race time limit, if any, for the first boat to [sail the course](#) (see rule [35](#));
- (7) location(s) of official notice board(s) or address of online notice board; location of the race office.

J2.2 Unless included in the notice of race, the sailing instructions shall include those of the following that will apply:

- (1) whether Appendix P will apply;
- (2) when appropriate, at an event where entries from other countries are expected, a copy in English of the national prescriptions that will apply;
- (3) procedure for changing the sailing instructions;
- (4) procedure for giving oral changes to the sailing instructions on the water (see rule [90.2\(c\)](#));
- (5) safety requirements, such as requirements and signals for personal flotation devices, check-in at the starting area, and check-out and check-in ashore;
- (6) signals to be made ashore and location of signal station(s);
- (7) restrictions controlling changes to boats when supplied by the organizing authority;
- (8) when and under what circumstances propulsion is permitted under rule [42.3\(i\)](#);
- (9) restrictions on use of [support person](#) vessels, plastic pools, radios, etc.; on trash disposal; on hauling out; and on outside assistance provided to a boat that is not [racing](#);

- (10) the racing area (a chart is recommended);
- (11) location of the starting area and any restrictions on entering it;
- (12) any special procedures or signals for individual or general recall;
- (13) approximate course length and approximate length of windward legs;
- (14) any special procedures or signals for changing a leg of the course (see rule [33](#));
- (15) description of any object, area or line designated by a [rule](#) to be an [obstruction](#) (see the definition [Obstruction](#)), and any restriction on entering such an area or crossing such a line;
- (16) boats identifying [mark](#) locations;
- (17) any special procedures for shortening the course or for [finishing](#) a shortened course;
- (18) the time limit, if any, for boats other than the first boat to [finish](#) and any other time limits or target times that apply while boats are [racing](#);
- (19) declaration requirements;
- (20) time allowances;
- (21) time limits, place of hearings, and special procedures for [protests](#), requests for redress or requests for reopening;
- (22) the national authority's approval of the appointment of an international jury, when required under rule [91\(b\)](#);
- (23) the time limit for requesting a hearing under rule N1.4(b), if not 30 minutes;
- (24) when required by rule [70.4](#), the national authority to which appeals and requests are required to be sent;
- (25) substitution of competitors;
- (26) the minimum number of boats appearing in the starting area required for a race to be started;
- (27) when and where races [postponed](#) or [abandoned](#) for the day will be sailed;
- (28) tides and currents;

- (29) other commitments of the race committee and obligations of boats.

APPENDIX M

RECOMMENDATIONS FOR PROTEST COMMITTEES

This appendix is advisory only; in some circumstances changing these procedures may be advisable. It is addressed primarily to the protest committee chair but may also help judges, protest committee secretaries, race committees and others involved in hearings.

In a hearing, the protest committee should weigh all testimony with equal care; should recognize that honest testimony can vary, and even be in conflict, as a result of different observations and recollections; should resolve such differences as best it can; should recognize that no boat or competitor is guilty until a breach of a [rule](#) has been established to the satisfaction of the protest committee; and should keep an open mind until all the evidence has been heard as to whether a boat or competitor has broken a [rule](#).

M1 PRELIMINARIES (may be performed by race office staff)

- (a) Receive the hearing request.
- (b) Note the time the hearing request is delivered and the protest time limit.
- (c) Inform each [party](#), including any [committee](#) involved, when and where the hearing will be held (rule [63.1\(a\)\(1\)](#)).

M2 BEFORE THE HEARING

M2.1 Make sure that

- (a) each [party](#) has the opportunity to read the [protest](#), request for redress or allegation and has had reasonable time to prepare for the hearing (rules [63.1\(a\)\(2\)](#) and [63.1\(a\)\(3\)](#)).
- (b) only one person from each [party](#) is present unless an interpreter is needed (rule [63.1\(a\)\(4\)](#)).

- (c) all boats and people involved are represented. If they are not, however, the committee may proceed under rule [63.1\(b\)](#).
- (d) boats' representatives were on board when required (rule [63.1\(a\)\(4\)](#)).
- (e) when the *parties* were in different events, both organizing authorities accept the composition of the protest committee (rule [63.2\(e\)](#)).
- (f) in a [protest](#) concerning class rules, obtain the current class rules and identify the authority responsible for interpreting them (rule [63.5\(d\)](#)).

M2.2 Determine if any members of the protest committee saw the incident. If so, require each of them to state that fact as soon as possible at the hearing (rule [63.4\(d\)](#)).

M2.3 Assess *conflicts of interest*.

- (a) Ensure that all protest committee members declare any possible *conflicts of interest*. At major events this will often be a formal written declaration made before the event starts that will be kept with the protest committee records.
- (b) At the start of any hearing, ensure that the *parties* are aware of any *conflicts of interest* of protest committee members. Ask the *parties* if they consent to the members. If a [party](#) does not object as soon as possible after a [conflict of interest](#) has been declared, the protest committee may take this as consent to proceed and should record it.
- (c) If a [party](#) objects to a member, the remainder of the protest committee members need to assess whether the [conflict of interest](#) is significant. The assessment will consider the level of the event, the level of the conflict and the perception of fairness. It may be acceptable to balance conflicts between protest committee members. Guidance may be found on the World Sailing website. Record the decision and the grounds for that decision.
- (d) In cases of doubt it may be preferable to proceed with a smaller protest committee. Except for hearings under rule

[69](#), there is no minimum number of protest committee members required.

- (e) When a request for redress is made under rule [61.4\(b\)\(1\)](#) and is based on an improper action or improper omission of a body other than the protest committee, a member of that body should not be a member of the protest committee.

M3 THE HEARING

M3.1 Check that the *protest* or request is valid.

- (a) Are the contents adequate (rule [60.3\(a\)](#), [61.2\(a\)](#) or [63.7\(b\)](#))?
- (b) Was it delivered in time? If not, is there good reason to extend the time limit (rule [60.3\(b\)](#), [61.2\(b\)](#) or [63.7\(b\)](#))?
- (c) When required, was the protestor involved in or a witness to the incident (rule [60.4\(a\)\(2\)](#))?
- (d) When necessary, was 'Protest' hailed and, if required, a red flag displayed correctly (rule [60.2\(a\)\(1\)](#))?
- (e) When the flag or hail was not necessary, was the protestee informed (rule [60.2\(b\)](#))?
- (f) Decide whether the *protest* or request for redress is valid (rule [63.4\(a\)](#)).
- (g) Once the validity of the *protest* or request has been determined, do not let the subject be introduced again unless truly new evidence is available.

M3.2 Take the evidence (rule [63.4](#)).

- (a) Ask the *parties* to tell their stories. Then allow them to question one another. In a redress matter, ask the *party* to state the request.
- (b) Make sure you know what facts each *party* is alleging before calling any witnesses. Their stories may be different.
- (c) Allow anyone, including a boat's crew, to give evidence. It is the *party* who normally decides which witnesses to call, although the protest committee may also call witnesses

(rule [63.4\(b\)](#)). The question asked by a *party* ‘Would you like to hear N?’ is best answered by ‘It is your choice.’

- (d) Call each *party's* witnesses (and the protest committee's if any) one by one. Limit *parties* to questioning the witness(es). (They may wander into general statements.)
- (e) Invite the protestee to question the protestor's witness first (and vice versa). This prevents the protestor from leading the witness from the beginning.
- (f) Allow members of the protest committee who saw the incident to give evidence (rule [63.4\(d\)](#)). Members who give evidence may be questioned, should take care to relate all they know about the incident that could affect the decision, and may remain on the protest committee (rule [63.4\(e\)](#)).
- (g) Try to prevent leading questions, but if that is impossible discount the evidence so obtained.
- (h) The protest committee chair should advise a *party* or a witness giving hearsay, repetitive or irrelevant evidence that the protest committee must give such evidence appropriate weight, which may be little or no weight at all (rules [63.4\(b\)](#) and [63.5\(a\)](#)).
- (i) Ask one member of the committee to note down evidence, particularly times, distances, speeds, etc.
- (j) Invite questions from protest committee members.
- (k) Invite each *party*, starting with the *party* that requested the hearing, to make a final statement of her case, particularly on any application or interpretation of the *rules*.

M3.3 Find the facts (rule [63.5\(a\)](#)).

- (a) Write down the facts; resolve doubts one way or the other.
- (b) Call back *parties* for more questions if necessary.
- (c) When appropriate, draw a diagram of the incident using the facts you have found.

M3.4 Decide the case (rule [63.5](#)).

- (a) Base the decision on the facts found. (If you cannot, find some more facts.)

- (b) In redress cases, make sure that no further evidence is needed from boats that will be affected by the decision.

M3.5 Inform the *parties* (rule [63.6](#)).

- (a) Recall the *parties* and read them the facts found, conclusions and [rules](#) that apply, and the decision. When time presses it is permissible to read the decision and give the details later.
- (b) Give any [party](#) a copy of the decision on request. File the [protest](#) or request for redress with the committee records.

M4 REOPENING A HEARING (rule [63.7](#))

M4.1 When a [party](#), within the time limit, has asked for a hearing to be reopened, hear the [party](#) making the request, look at any video, etc., and decide whether there is any significant new evidence that might lead you to change your decision. Decide whether your interpretation of the [rules](#) may have been wrong; be open-minded as to whether you have made a mistake. If none of these applies refuse to reopen; otherwise schedule a hearing.

M4.2 Evidence is 'new'

- (a) if it was not reasonably possible for the [party](#) asking for the reopening to have discovered the evidence before the original hearing,
- (b) if the protest committee is satisfied that before the original hearing the evidence was diligently but unsuccessfully sought by the [party](#) asking for the reopening, or
- (c) if the protest committee learns from any source that the evidence was not available to the *parties* at the time of the original hearing.

M5 DISCRETIONARY PENALTIES (rule [64](#))

Rule [64](#) enables a boat that has broken a rule subject to a discretionary penalty to comply with Sportsmanship and the Rules by reporting within the protest time limit that she has broken the rule. If the report does not include sufficient facts for the protest committee to decide what penalty to impose, the

committee may question a representative of the boat and any witnesses to collect evidence it decides is appropriate. It is not necessary to conduct a hearing to collect this evidence. Note that guidelines for discretionary penalties may be found on the World Sailing website.

M6 MISCONDUCT ([rule 69](#))

- M6.1** An action under this rule is not a [protest](#), but the protest committee gives its allegations in writing to the competitor before the hearing. The hearing is conducted under rule [63](#), but the protest committee must have at least three members (rule [69.2\(a\)](#)). Use the greatest care to protect the competitor's rights.
- M6.2** A competitor or a boat cannot protest under rule [69](#), but the hearing request form of a competitor who tries to do so may be accepted as a report to the protest committee, which can then decide whether or not to call a hearing.
- M6.3** Unless World Sailing has appointed a person for the role, the protest committee may appoint a person to present the allegation. This person might be a race official, the person making the allegation or other appropriate person. When no reasonable alternative person is available, a person who was appointed as a member of the protest committee may present the allegation.
- M6.4** When it is desirable to call a hearing under rule [69](#) as a result of a [Part 2](#) incident, it is important to hear any boat-vs.-boat [protest](#) in the normal way, deciding which boat, if any, broke which [rule](#), before proceeding against the competitor under rule [69](#).
- M6.5** Although action under rule [69](#) is taken against a competitor, boat owner or [support person](#), and not a boat, a boat may also be penalized (rules [69.2\(h\)\(2\)](#) and [62.4](#)).
- M6.6** When a protest committee upholds a rule [69](#) allegation it will need to consider if it is appropriate to report to either a national authority or World Sailing. Guidance on when to report may be found in the World Sailing Case Book. When the protest committee does make a report, it may recommend whether or not further action should be taken.

M6.7 Unless the right of appeal is denied in accordance with rule [70.3](#), a [party](#) to a rule [69](#) hearing may appeal the decision of the protest committee.

M6.8 Further guidance for protest committees about misconduct may be found on the World Sailing website.

M7 APPEALS (rule [70](#) and Appendix R)

When decisions can be appealed,

- (a) retain the papers relevant to the hearing so that the information can easily be used for an appeal. Is there a diagram endorsed or prepared by the protest committee? Are the facts found sufficient? (Example: Was there an [overlap](#)? Yes or No. 'Perhaps' is not a fact found.) Are the names of the protest committee members and other important information on the form?
- (b) comments by the protest committee on any appeal should enable the appeals committee to picture the whole incident clearly; the appeals committee knows nothing about the situation.

M8 PHOTOGRAPHIC EVIDENCE

Photographs and videos can sometimes provide useful evidence but protest committees should recognize their limitations and note the following points:

- (a) The [party](#) producing the photographic evidence is responsible for arranging the viewing.
- (b) View the video several times to extract all the information from it.
- (c) The depth perception of any single-lens camera is very poor; with a telephoto lens it is non-existent. When the camera views two [overlapped](#) boats at right angles to their course, it is impossible to assess the distance between them. When the camera views them head on, it is impossible to see whether an [overlap](#) exists unless it is substantial.
- (d) Ask the following questions:
 - (1) Where was the camera in relation to the boats?

- (2) Was the camera's platform moving? If so in what direction and how fast?
- (3) Is the angle changing as the boats approach the critical point? Fast panning causes radical change.
- (4) Did the camera have an unrestricted view throughout?

APPENDIX N

INTERNATIONAL JURIES

See rules [70.3\(a\)](#) and [91\(b\)](#). This appendix shall not be changed by the notice of race, sailing instructions or national prescriptions.

N1 COMPOSITION, APPOINTMENT AND ORGANIZATION

- N1.1** An international jury shall be composed of experienced sailors with excellent knowledge of the racing rules and extensive protest committee experience. It shall be independent of and have no members from the race committee or the technical committee, and it shall be appointed by the organizing authority, subject to approval by the national authority if required (see rule [91\(b\)](#)), or by World Sailing under rule [89.2\(c\)](#).
- N1.2** The jury shall consist of a chair, a vice chair if desired, and other members for a total of at least five. A majority shall be International Judges.
- N1.3** No more than two members (three, in Groups M, N and Q) shall be from the same national authority.
- N1.4** (a) The chair of a jury may appoint one or more panels composed in compliance with rules N1.1, N1.2 and N1.3. This can be done even if the full jury is not composed in compliance with these rules.
- (b) The chair of a jury may appoint panels of at least three members each, of which the majority shall be International Judges. Members of each panel shall be from at least three different national authorities except in Groups M, N and Q, where they shall be from at least two different national authorities. If dissatisfied with a panel's decision, a [party](#) is entitled to a hearing by a panel composed in compliance with rules N1.1, N1.2 and N1.3, except concerning the facts found, if requested within 30 minutes, or the time limit specified in the sailing instructions, after being informed of the decision.

- N1.5** When a full jury, or a panel, has fewer than five members, because of illness or emergency, and no qualified replacements are available, it remains properly constituted if it consists of at least three members and if at least two of them are International Judges. When there are three or four members they shall be from at least three different national authorities except in Groups M, N and Q, where they shall be from at least two different national authorities.
- N1.6** When it is considered desirable that some members not participate in discussing and deciding a [protest](#) or request for redress, and no qualified replacements are available, the jury or panel remains properly constituted if at least three members remain and at least two of them are International Judges.
- N1.7** In exception to rules N1.1 and N1.2, World Sailing may in limited circumstances authorize an international jury consisting of a total of only three members. All members shall be International Judges. The members shall be from three different national authorities (two, in Groups M, N and Q). The authorization shall be stated in a letter of approval to the organizing authority and in the notice of race or sailing instructions, and the letter shall be posted on the official notice board.
- N1.8** When the national authority's approval is required for the appointment of an international jury (see rule [91\(b\)](#)), notice of its approval shall be included in the sailing instructions or be posted on the official notice board.
- N1.9** If the jury or a panel acts while not properly constituted, its decisions may be appealed.

N2 RESPONSIBILITIES

- N2.1** An international jury is responsible for hearing and deciding all [protests](#), requests for redress and other matters arising under the rules of [Part 5](#). When asked by the organizing authority, the race committee or the technical committee, it shall advise and assist them on any matter directly affecting the fairness of the competition.
- N2.2** Unless the organizing authority directs otherwise, the jury shall decide

- (a) questions of eligibility, measurement or rating certificates; and
- (b) whether to authorize the substitution of competitors, boats or equipment when a [rule](#) requires such a decision.

N2.3 The jury shall also decide matters referred to it by the organizing authority, the race committee or the technical committee.

N3 PROCEDURES

N3.1 Members shall not be regarded as having a significant [conflict of interest](#) (see rule [63.3](#)) by reason of their nationality, club membership or similar. When otherwise considering a significant [conflict of interest](#) as required by rule [63.3](#), considerable weight must be given to the fact that decisions of an international jury cannot be appealed and this may affect the perception of fairness and lower the level of conflict that is significant. In case of doubt, the hearing should proceed as permitted by rule N1.6.

N3.2 If a panel fails to agree on a decision it may adjourn, in which case the chair shall refer the matter to a properly constituted panel with as many members as possible, which may be the full jury.

N4 MISCONDUCT ([Rule 69](#))

N4.1 The World Sailing Code of Ethics contains procedures that apply to specific international events with regard to the appointment of a person to conduct any investigation. These procedures override any conflicting provision of this appendix.

N4.2 A person shall be responsible for presenting to the hearing panel any allegations of misconduct under rule [69](#). This person shall not be a member of the hearing panel but may be a member of the jury. Such a person shall be required to make full disclosure of all material gathered in the course of the investigation to the person subject to allegations of a breach of rule [69](#).

N4.3 Prior to a hearing, the hearing panel, to the extent practically possible, shall not act as an investigator of any allegations made

under rule [69](#). However, during the hearing the panel shall be entitled to ask any investigative questions it may see fit.

N4.4 If the panel decides to call a hearing, all material disclosed to the panel in order for them to make that decision must be disclosed to the person subject to the allegations before the hearing begins.

APPENDIX P

SPECIAL PROCEDURES FOR RULE 42

All or part of this appendix applies only if the notice of race or sailing instructions so state.

P1 OBSERVERS AND PROCEDURE

P1.1 The protest committee may appoint observers, including protest committee members, to act in accordance with rule P1.2. A person with a significant [conflict of interest](#) shall not be appointed as an observer.

P1.2 If an observer appointed under rule P1.1 decides that a boat has broken rule [42](#), the boat may be penalized by, as soon as reasonably possible making a sound signal, pointing a yellow flag at her, and clearly identifying her by hailing, even if she is no longer [racing](#). A boat so penalized shall not be penalized a second time under rule [42](#) for the same incident.

P2 PENALTIES

P2.1 First Penalty

When a boat is first penalized under rule P1.2 her penalty shall be a Two-Turns Penalty under rule [44.2](#). If she fails to take it she shall be disqualified without a hearing.

P2.2 Second Penalty

When a boat is penalized a second time during the event, she shall promptly retire. If she fails to do so she shall be disqualified without a hearing and her score shall not be excluded.

P2.3 Third and Subsequent Penalties

When a boat is penalized a third or subsequent time during the event, she shall promptly retire. If she does so her penalty shall be disqualification without a hearing and her score shall not be excluded. If she fails to do so her penalty shall be disqualification without a hearing from all races in the event, with no score excluded, and the protest committee shall consider calling a hearing under rule [69.2](#).

P2.4 Penalties near the Finishing Line

If a boat is penalized under rule P2.2 or P2.3 and it was not reasonably possible for her to retire before finishing, she shall be scored as if she had retired promptly.

P3 POSTPONEMENT, GENERAL RECALL OR ABANDONMENT

If a boat has been penalized under rule P1.2 and the race committee signals a postponement, general recall or abandonment, the penalty is cancelled, but it is still counted to determine the number of times she has been penalized during the event.

P4 REDRESS LIMITATION

A boat shall not be given redress for an action by a member of the protest committee or its designated observer under rule P1.2 unless the action was improper due to a failure to take into account a race committee signal or a class rule.

P5 FLAGS O AND R

P5.1 When Rule P5 Applies

Rule P5 applies if the class rules permit pumping, rocking and ooching when the wind speed exceeds a specified limit.

P5.2 Before the Starting Signal

- (a) The race committee may signal that pumping, rocking and ooching are permitted, as specified in the class rules, by displaying flag O before or with the warning signal.
- (b) If the wind speed becomes less than the specified limit after flag O has been displayed, the race committee may postpone the race. Then, before or with a new warning signal, the committee shall display either flag R, to signal that rule 42 as changed by the class rules applies, or flag O, as provided in rule P5.2(a).
- (c) If flag O or flag R is displayed before or with the warning signal, it shall be displayed until the starting signal.

P5.3 After the Starting Signal

After the starting signal,

- (a) if the wind speed exceeds the specified limit, the race committee may display flag O with repetitive sounds at a [mark](#) to signal that pumping, rocking and ooching are permitted, as specified in the class rules, after passing the [mark](#);
- (b) if flag O has been displayed and the wind speed becomes less than the specified limit, the race committee may display flag R with repetitive sounds at a [mark](#) to signal that rule [42](#), as changed by the class rules, applies after passing the [mark](#).

APPENDIX R

PROCEDURES FOR APPEALS AND REQUESTS

See rule [70](#). A national authority may change this appendix by prescription, but it shall not be changed by the notice of race or sailing instructions.

Time periods shall be extended by the national authority when there is good reason to do so.

R1 APPEALS AND REQUESTS

Appeals, requests by protest committees for confirmation or correction of their decisions, and requests for interpretations of the [rules](#) shall be made in compliance with this appendix.

R2 SUBMISSION OF DOCUMENTS

R2.1 To make an appeal,

- (a) no later than seven days after receiving the protest committee's written decision or its decision not to reopen a hearing, the appellant shall send an appeal and a copy of the protest committee's decision to the national authority. The appeal shall state why the appellant believes the protest committee's decision or its procedures were incorrect;
- (b) when a hearing has not been held within 30 days after a [protest](#) or request for redress was delivered, the appellant shall, within a further seven days, send an appeal with a copy of the [protest](#) or request and any relevant correspondence;
- (c) when the protest committee fails to comply with rule [63.6\(b\)](#), the appellant shall, within a reasonable time after the hearing, send an appeal with a copy of the [protest](#) or request and any relevant correspondence.

If a copy of the [protest](#) or request is not available, the appellant shall instead send a statement of its substance.

R2.2 The appellant shall also send, with the appeal or as soon as possible thereafter, all of the following documents that are available to her:

- (a) the written protest(s) or request(s) for redress;
- (b) a diagram, prepared or endorsed by the protest committee, showing the positions and tracks of all boats involved, the course to the next mark and the required side, the force and direction of the wind, and, if relevant, the depth of water and direction and speed of any current;
- (c) the notice of race, the sailing instructions, any other documents governing the event, and any changes to them;
- (d) any additional relevant documents; and
- (e) the names, postal and email addresses, and telephone numbers of all *parties* to the hearing and the protest committee chair.

R2.3 A request from a protest committee for confirmation or correction of its decision shall be sent no later than seven days after the decision and shall include the decision and the documents listed in rule R2.2. A request for an interpretation of the rules shall include assumed facts.

R3 RESPONSIBILITIES OF NATIONAL AUTHORITY AND PROTEST COMMITTEE

Upon receipt of an appeal or a request for confirmation or correction, the national authority shall send to the *parties* and protest committee copies of the appeal or request and the protest committee's decision. It shall ask the protest committee for any relevant documents listed in rule R2.2 not sent by the appellant or the protest committee, and the protest committee shall promptly send them to the national authority. When the national authority has received them it shall send copies to the *parties*.

R4 COMMENTS AND CLARIFICATIONS

R4.1 The *parties* and protest committee may make written comments on the appeal or request or on any of the documents listed in rule R2.2, provided they do so within seven days of the national authority making them available.

R4.2 The national authority may seek clarifications of [rules](#) governing the event from organizations that are not *parties* to the hearing.

R4.3 The national authority shall send copies of comments and clarifications received to the *parties* and protest committee as appropriate.

R5 INADEQUATE FACTS; REOPENING

The national authority shall accept the protest committee's finding of facts except when it decides they are inadequate. In that case it shall require the committee to provide additional facts or other information, or to reopen the hearing and report any new finding of facts, and the committee shall promptly do so.

R6 WITHDRAWING AN APPEAL

An appellant may withdraw an appeal before it is decided by accepting the protest committee's decision.

APPENDIX S

STANDARD SAILING INSTRUCTIONS

This appendix applies only if the notice of race so states.

These Standard Sailing Instructions may be used at an event in place of printed sailing instructions made available to each boat. To use them, state in the notice of race that 'The sailing instructions will consist of the instructions in RRS Appendix S, Standard Sailing Instructions, and supplementary sailing instructions that will be posted on the official notice board located at ____.'

The supplementary sailing instructions will include:

- 1 The location of the race office and of the flag pole on which signals made ashore will be displayed (see SI 4.1 below).*
- 2 A table showing the schedule of races, including the day and date of each scheduled day of racing, the number of races scheduled each day, the scheduled time of the first warning signal each day, and the latest time for a warning signal on the last scheduled day of racing (SI 5).*
- 3 A list of the marks that will be used and a description of each one (SI 8). How new marks will differ from original marks (SI 10).*
- 4 The time limits, if any, that are listed in SI 12.*
- 5 Any changes or additions to the instructions in this appendix.*

A copy of the supplementary sailing instructions will be available to competitors on request.

SAILING INSTRUCTIONS

1 RULES

- 1.1 The event will be governed by the rules as defined in *The Racing Rules of Sailing*.

2 NOTICES TO COMPETITORS

- 2.1 Notices to competitors will be posted on the official notice board.
- 2.2 Supplementary sailing instructions (called 'the supplement' below) will be posted on the official notice board.

3 CHANGES TO SAILING INSTRUCTIONS

- 3.1 Any change to the sailing instructions will be posted before 0800 on the day it will take effect, unless this time is changed in the supplement. Any change to the schedule of races will be posted by 2000 on the day before it will take effect.

4 SIGNALS MADE ASHORE

- 4.1 Signals made ashore will be displayed from the flag pole. The supplement will state its location.

5 SCHEDULE OF RACES

- 5.1 The supplement will include a table showing the days, dates, number of races scheduled, the scheduled times of the first warning signal each day, and the latest time for a warning signal on the last scheduled day of racing.
- 5.2 To alert boats that a race or sequence of races will begin soon, the orange starting line flag will be displayed with one sound at least five minutes before a warning signal is made.

6 CLASS FLAGS

- 6.1 Each class flag will be the class insignia on a plain background or as stated in the supplement.

7 THE COURSES

- 7.1 No later than the warning signal, the race committee will designate the course, and it may also display the approximate compass bearing of the first leg.

7.2 The course diagrams are on the pages following SI 13. They show the courses, the order in which marks are to be passed, and the side on which each mark is to be left. The supplement may include additional courses.

8 MARKS

8.1 A list of the marks that will be used, including a description of each one, will be included in the supplement.

9 THE START

9.1 Races will be started by using [RRS 26](#).

9.2 The starting line will be between a staff displaying an orange flag on the race committee vessel and the course side of the starting mark.

10 CHANGE OF THE NEXT LEG OF THE COURSE

10.1 To change the next leg of the course, the race committee will lay a new mark (or move the finishing line) and remove the original mark as soon as practicable. When in a subsequent change a new mark is replaced, it will be replaced by an original mark.

11 THE FINISH

11.1 The finishing line will be between a staff displaying a blue flag on the race committee vessel and the course side of the finishing mark.

12 TIME LIMITS

12.1 The supplement will state which of the following time limits, if any, will apply and, for each, the time limit.

- **Mark 1 Time Limit** Time limit for the first boat to pass Mark 1.
- **Race Time Limit** Time limit for the first boat to sail the course.
- **Finishing Window** Time limit for boats to finish after the first boat sails the course.

12.2 If no boat has passed Mark 1 within the Mark 1 Time Limit, the race shall be [abandoned](#).

12.3 Boats failing to finish within the Finishing Window shall be scored Did Not Finish without a hearing. This changes [RRS 35](#), A5.1 and A5.2.

13 PROTESTS AND REQUESTS FOR REDRESS

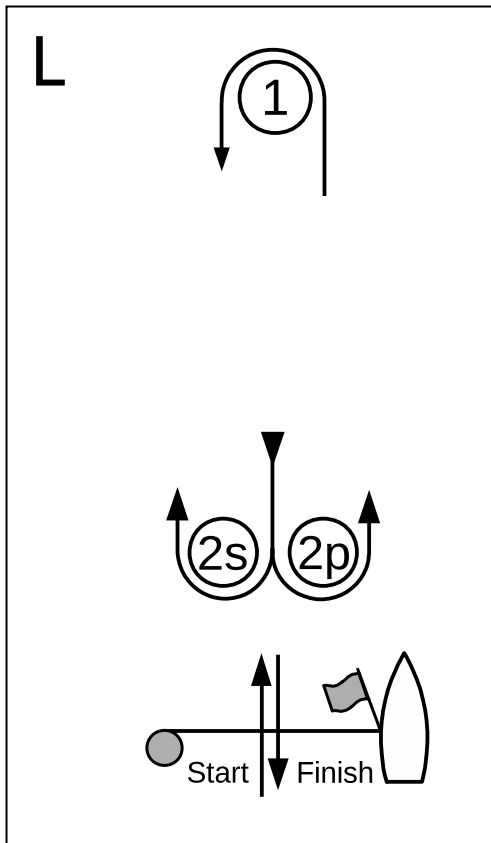
13.1 Hearing request forms are available at the race office. Protests and requests for redress or reopening shall be delivered there within the appropriate time limit.

13.2 For each class, the protest time limit is 60 minutes after the last boat has finished the last race of the day or the race committee signals no more racing today, whichever is later.

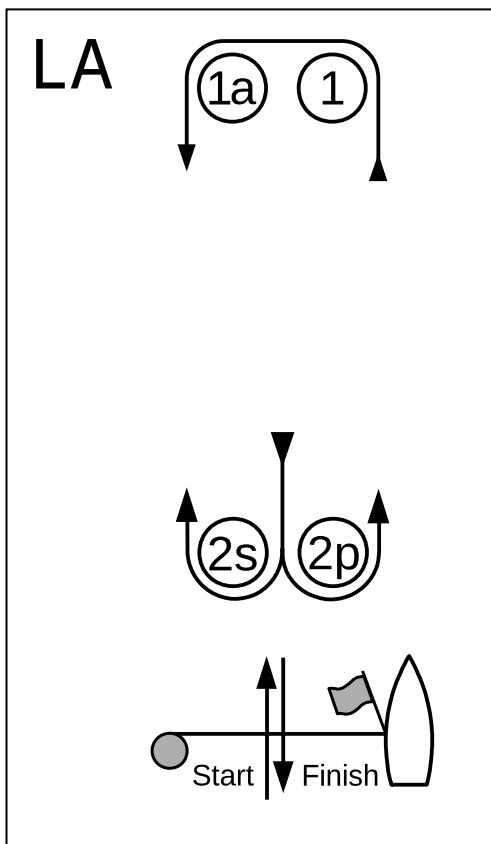
13.3 Notices will be posted no later than 30 minutes after the protest time limit to inform competitors of hearings in which they are parties or named as witnesses and where the hearings will be held.

13.4 Notices of protests by the race committee, technical committee or protest committee will be posted to inform boats under [RRS 60.2\(d\)](#).

COURSE DIAGRAMS

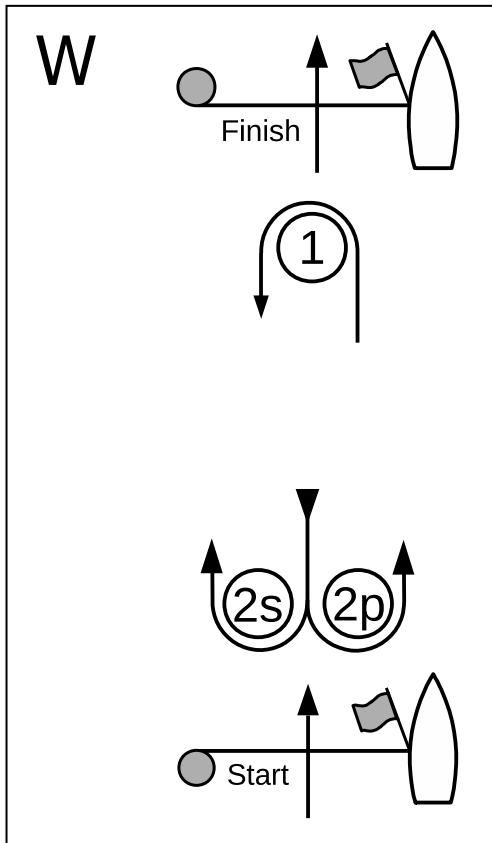


Course L – Windward/Leeward, Leeward Finish	
<i>Signal</i>	<i>Mark Rounding Order</i>
L2	Start – 1 – 2s/2p – 1 – Finish
L3	Start – 1 – 2s/2p – 1 – 2s/2p – 1 – Finish
L4	Start – 1 – 2s/2p – 1 – 2s/2p – 1 – 2s/2p – 1 – Finish

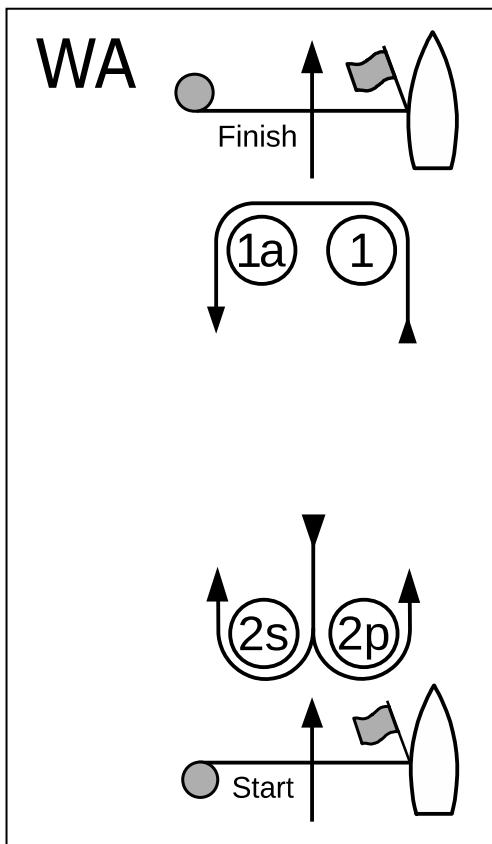


Course LA – Windward/Leeward with Offset Mark, Leeward Finish	
<i>Signal</i>	<i>Mark Rounding Order</i>
LA2	Start – 1 – 1a – 2s/2p – 1 – 1a – Finish
LA3	Start – 1 – 1a – 2s/2p – 1 – 1a – 2s/2p – 1 – 1a – Finish
LA4	Start – 1 – 1a – 2s/2p – 1 – 1a – 2s/2p – 1 – 1a – 2s/2p – 1 – 1a – Finish

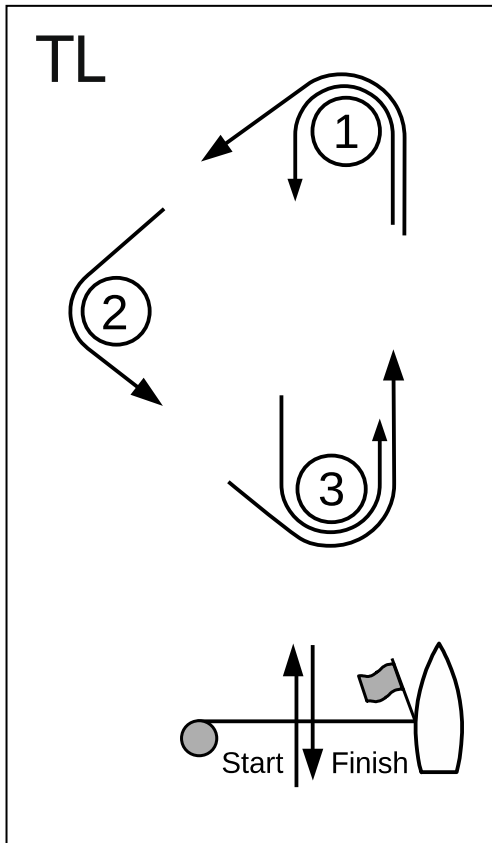
Appendix S STANDARD SAILING INSTRUCTIONS



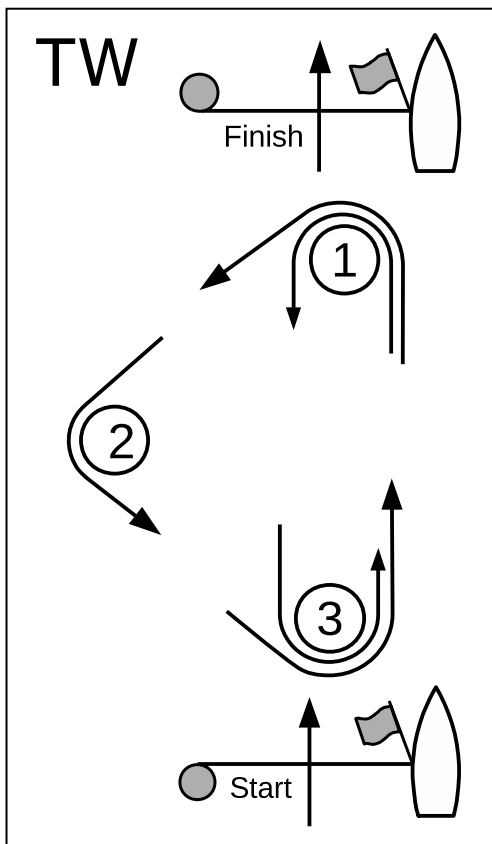
Course W – Windward/Leeward, Windward Finish	
<i>Signal</i>	<i>Mark Rounding Order</i>
W2	Start – 1 – 2s/2p – Finish
W3	Start – 1 – 2s/2p – 1 – 2s/2p – Finish
W4	Start – 1 – 2s/2p – 1 – 2s/2p – 1 – 2s/2p – Finish



Course WA – Windward/Leeward with Offset Mark, Windward Finish	
<i>Signal</i>	<i>Mark Rounding Order</i>
WA2	Start – 1 – 1a – 2s/2p – Finish
WA3	Start – 1 – 1a – 2s/2p – 1 – 1a – 2s/2p – Finish
WA4	Start – 1 – 1a – 2s/2p – 1 – 1a – 2s/2p – 1 – 1a – 2s/2p – Finish



Course TL – Triangle, Leeward Finish	
<i>Signal</i>	<i>Mark Rounding Order</i>
TL2	Start – 1 – 2 – 3 – 1 – Finish
TL3	Start – 1 – 2 – 3 – 1 – 3 – 1 – Finish
TL4	Start – 1 – 2 – 3 – 1 – 3 – 1 – 3 – 1 – Finish



Course TW – Triangle, Windward Finish	
<i>Signal</i>	<i>Mark Rounding Order</i>
TW2	Start – 1 – 2 – 3 – Finish
TW3	Start – 1 – 2 – 3 – 1 – 3 – Finish
TW4	Start – 1 – 2 – 3 – 1 – 3 – 1 – 3 – Finish

APPENDIX T

ARBITRATION

All or part of this appendix applies only if the notice of race or sailing instructions so state.

Arbitration adds an extra step to the protest resolution process but can eliminate the need for some protest hearings, thus speeding up the process for events in which many protests are expected. Further guidance on arbitration can be found in the World Sailing Judges Manual, which is available on the World Sailing website.

T1 POST-RACE PENALTIES

- (a) Provided that rule [44.1\(b\)](#) does not apply, a boat that may have broken one or more rules of [Part 2](#) or rule [31](#) in an incident may take a Post-Race Penalty at any time after the race until the beginning of a protest hearing involving the incident.
- (b) A Post-Race Penalty is a 30% Scoring Penalty calculated as stated in rule [44.3\(c\)](#). However, rule [44.1\(a\)](#) applies.
- (c) A boat takes a Post-Race Penalty by delivering to the arbitrator or a member of the protest committee a written statement that she accepts the penalty and that identifies the race number and where and when the incident occurred.

T2 ARBITRATION MEETING

An arbitration meeting will be held prior to a protest hearing for each incident resulting in a [protest](#) by a boat involving one or more rules of [Part 2](#) or rule [31](#), but only if each [party](#) is represented by a person who was on board at the time of the incident. No witnesses will be permitted. However, if the arbitrator decides that rule [44.1\(b\)](#) may apply or that arbitration is not appropriate, the meeting will not be held, and if a meeting is in progress, it will be closed.

T3 ARBITRATOR'S OPINION

Based on the evidence given by the representatives, the arbitrator will offer an opinion as to what the protest committee is likely to decide:

- (a) the [protest](#) is invalid,
- (b) no boat will be penalized for breaking a [rule](#), or
- (c) one or more boats will be penalized for breaking a [rule](#), identifying the boats and the penalties.

T4 ARBITRATION MEETING OUTCOMES

After the arbitrator offers an opinion,

- (a) a boat may take a Post-Race Penalty, and
- (b) a boat may ask to withdraw her [protest](#). The arbitrator may then act on behalf of the protest committee in accordance with rule [63.2\(a\)](#) to allow the withdrawal.

Unless all [protests](#) involving the incident are withdrawn, a protest hearing will be held.

LIST OF AUSTRALIAN SAILING PRESCRIPTIONS

Australian Sailing has prescribed to the following RRS:

[Introduction](#)

[Rule 1.2](#)

[Rule 6.1](#)

[Rule 26](#)

[Rule 46](#)

[Rule 48](#)

[Rule 65.1](#)

[Rule 70.3\(b\)](#)

[Rule 86.3](#)

[Rule 88.2](#)

[Rule 91](#)

